



0.3%

The rate of **First Nations still births** is down to 0.3%, compared to other parts of Qld, which sit between 1% and 5%

\$4 MILLION+

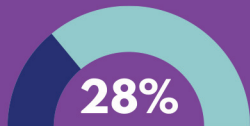
Community Hub quality of life improvements (across 5 Logan Hubs alone) are estimated at >\$4 Mill



of parents and carers reported greater **parenting ability, confidence and coping** as a result of Community Hub support

42%
decrease

.....
in the number of birth-parents receiving **nil or inadequate antenatal care**



In 2022, the Maternal and Child Health Hubs provided care for **approx. 28%** of the birthing population of the area

13%
saving

.....
Maternal and Child Health Hubs generate a minimum saving of 13% on the cost of a hospital-based midwifery model



Logan **Indigenous mothers** who attended five or more antenatal visits increased from **77%** in 2015 to **88%** in 2022.

Vulnerability rates for children aged 5 years have **dropped** by:*

21.5% in **Eagleby** since 2018

21.7% in **Yarrabilba** since 2018

24.7% in **Berrinba** during 2018-2021

Depression, anxiety and stress amongst women has dropped significantly through Nurse Home Visiting

2800+ → 735

children and their families **engaged in discussions about development**

.....
resultant health appointments through early detection

Only **10% out of 2800** previously engaged with Child Health in the last 12 months

In one school alone, Quality Play has contributed to:

7.6%

increased attendance for Aboriginal students

7%

increased attendance for students with disability

16%

improved behaviour (16% decrease in suspensions)

17.6%

improved learning attributes and achievement levels



SCAN FOR MORE DETAIL

community conversations applied within the community-led strategy¹

1,000+

new career pathways established



community members engaging with Logan Together

30k+

\$20 MIL+

new and diverse investment attracted into local community initiatives in 2023 alone

OUR REGIONAL SOCIAL AND ECONOMIC DEVELOPMENT

11

networked and aligned civic leadership groups established and maintained

6+

activated formal partnerships generated between community and cross-sectoral leaders

people assembled in two major community-designed, hosted and facilitated learning events alone

2,500

ongoing local jobs created in Logan



The **most significant** change occurring through Logan Together has been identified as social cohesion, specifically:²



SCAN FOR
MORE DETAIL

Strengthened Aboriginal
Community Controlled
Organisations

Increased community
participation in services

Community leadership
development

Reduction in
social isolation

Targeted resource
flows

Connectedness

Community pride and
agency

Enhanced quality of
local services

Regional economic
outcomes

Increased
civic participation

New employment
pathways

Heightened skills and
capabilities

Streamlined, holistic
model of care

Healing and reconciliation

In our journey towards equity, our community has created:

CHILDREN AT THE HEART



- National Immersion
- Learning Series co-designed and led by community

COMMUNITY LED



- First Nations-led, **cross-cultural Equity Agreement** developed and applied by *Gnirigomindala Karulbo*

FIRST NATIONS FIRST



- First Nations **Community Plan for self-determination**

- Deeply **cultural re-imagined early childhood system** and associated metrics

of the first cohort:



did not re-offend within 12 months

of the first cohort:

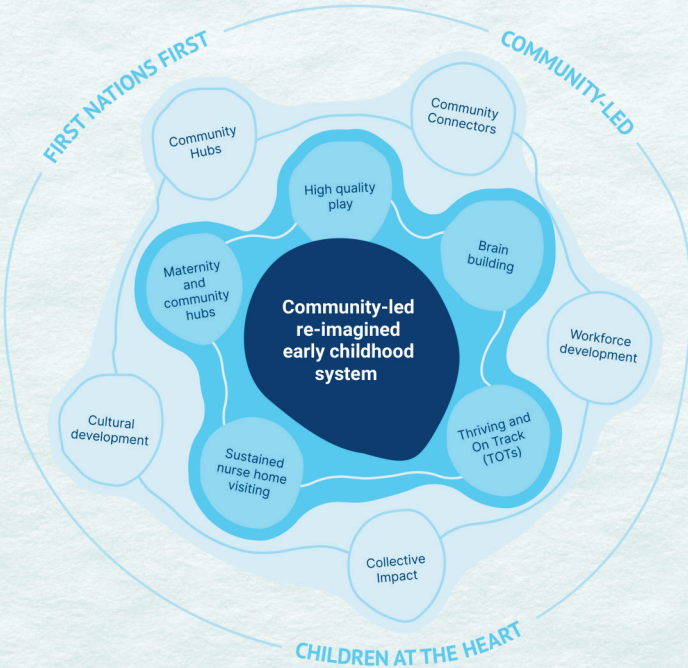


were removed from the Serious Repeat Offender List

The **KoKo Youth Justice initiative**, led by the Village Connect Community and Maternal and Child Health Hub, is making a difference for Logan's young Pasifika people.

This initiative is being widely extended across Logan.

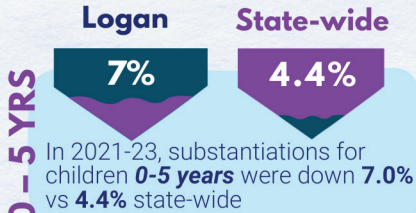
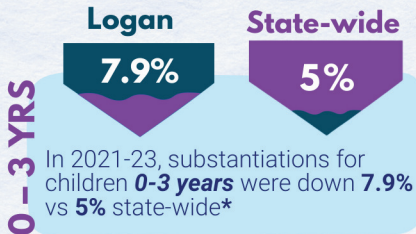
3



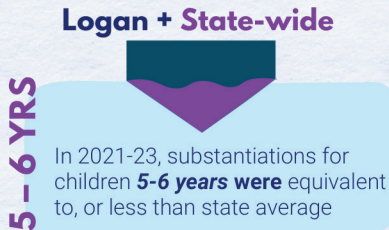
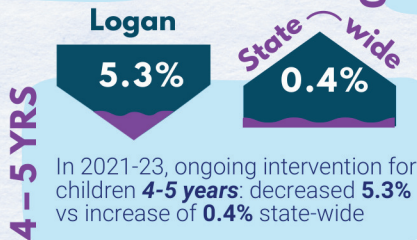
SCAN FOR MORE DETAIL

LOGAN/BEAUDESERT + STATE-WIDE

DATA COMPARISON



SCAN FOR MORE DETAIL



In **2022-23** child protection orders for ages 0-8 yrs decreased by **2%**

* Child protection substantiations capture cases that have been reported to the department responsible for child protection.

YARRABILBA

53.1%

In 2021, 53.1% children started school **developmentally on track in all domains**

This is **14% more children than in 2018** and above the Queensland state average

In 2021, **77.9%** more children started school **developmentally on track in social competence**

This is **16% more children** and above the Queensland state average

40.7%

In 2021, 40.7% children started school **developmentally on track in all domains**

This is **23% more children** than in 2018 and above the Queensland state average

EAGLEBY

14.4%

In 2021, children (at 5 yrs old) who were on track for physical and communication domains **significantly increased** compared to 2018 (10.6% and 14.4% higher respectively)

BERRINBA



SCAN FOR MORE DETAIL