



2017/18 ANNUAL REPORT

TABLE OF CONTENTS

Message from the Director of the Logan Together Backbone Team	3
Message from the Chair of the Trust	4
Message from the Chair of the Leadership Table	5
About Logan Together	6
What is Collective Impact?	7
Our Vision	8
Who is Logan Together?	9
Collaboration Arrangements	10
Project Governance	11
The Logan Child Friendly Consortium Trust	12
Our Trust Directors	13
Community Listening	14
Our Roadmap	16
Logan Together Roadmap Projects	18
Our Progress	20
Logan Together Projects	24
Events	32
Resource Kit Launch	34
Inductions	35
Partnerships	36
Financial Report	38
Stay in the Loop	44



Logan Together pays respect to the Traditional Owners and custodians of the Land on which our community lives, works and plays, the Yugambah and the Jaggera people. We pay our respects to Elders past, present and emerging and seek their guidance and wisdom to ensure all children get the best start in life. We extend our respect to all Elders and Aboriginal and Torres Strait Islander peoples in Logan and across Australia and commit to putting into action the [ChangeFest Statement 2018](#) in our everyday practice.



MESSAGE FROM THE DIRECTOR

Logan Together continues to grow and cement its role as a movement which will change the development trajectory of many of Logan's children. In the third year of the movement's existence, we continued to lay the groundwork, talk to the community, partner with organisations – and, most pleasingly, see some important Logan Together projects really get off the ground.

The movement continues to be supported by all levels of government, on both sides of the political spectrum – showing that the Logan Together mindset is universal. It is now our job, as the community, organisations, and leaders who make up Logan Together, to ensure that mindset is translated into real change. This is the year, more than any other, we really began to see that change blossoming.

During this period, our partners at Metro South Health opened three Child Health and Maternity Hubs, we launched the Enrol to Prep and Kindy Conversations campaigns, worked to build a network of community gateways, and hosted a wide range of events bringing people together from near and far and brainstorming ideas, small and large, which I believe will make a difference to Logan's families. We have also seen the emergence of the SureSteps family coaching project developed by YFS, the announcement of the Yarrabilba Child and Family Centre led by the Queensland Government, and the Education Queensland-led Early Years Neighbourhood Networks start to take off.

The big event which comes to mind, in addition to our guest speakers and regular inductions, is the Logan Get Together held in October 2017. As outlined later in this publication, this was a pivotal point for Logan Together, when hundreds of people came together to see inspiring speakers, participate in workshops, and leave inspired and fizzing with optimism and determination.

Our refreshed website was launched in late 2017 and delves deep into each area of our Roadmap, using data to show what

we need to do and updating how we are going. It holds a range of resources, news, and information about collective impact, Logan, and the movement.

We also launched the latest Summary State of Logan's Children and Families Report, our data-driven Suburb Profiles, and other resources which have proved extremely popular and useful for Logan Together partners.

This year also saw a new Deputy Director role created with Sandra Fields joining us as the inaugural holder of that role.

Another wonderful part of the past 12 months has been hosting and supporting other communities from across the country who have their own collective impact movements happening. It shows that this is a philosophy really taking off in pockets all around Australia.

Once again, I must thank the dozens of organisations and hundreds of people who have collaborated as part of the Logan Together movement from 2017/18. We are well on the path to positive change and I am deeply privileged to be part of this important journey.

**Matthew Cox Director,
Logan Together Backbone Team**

MESSAGE FROM THE CHAIR OF THE TRUST



In 2017/18 the Board continued to focus on developing the strategic and statutory requirements for Logan Together to be positioned within the collective governance framework.

This entailed a great deal of hard work with the formation of the Logan Child Friendly Community Limited company; applications to the ACNC, ATO for public benevolent status and for a fundraising license to enable Logan Together to attain donations and have charitable status.

Work was commissioned on the overall governance structure for Logan Together, recognising the uniqueness of what we are trying to model with our key partners – government, philanthropists and local residents.

As we mature, our strategy continues to be reviewed and a number of milestones were achieved in 2017/18.

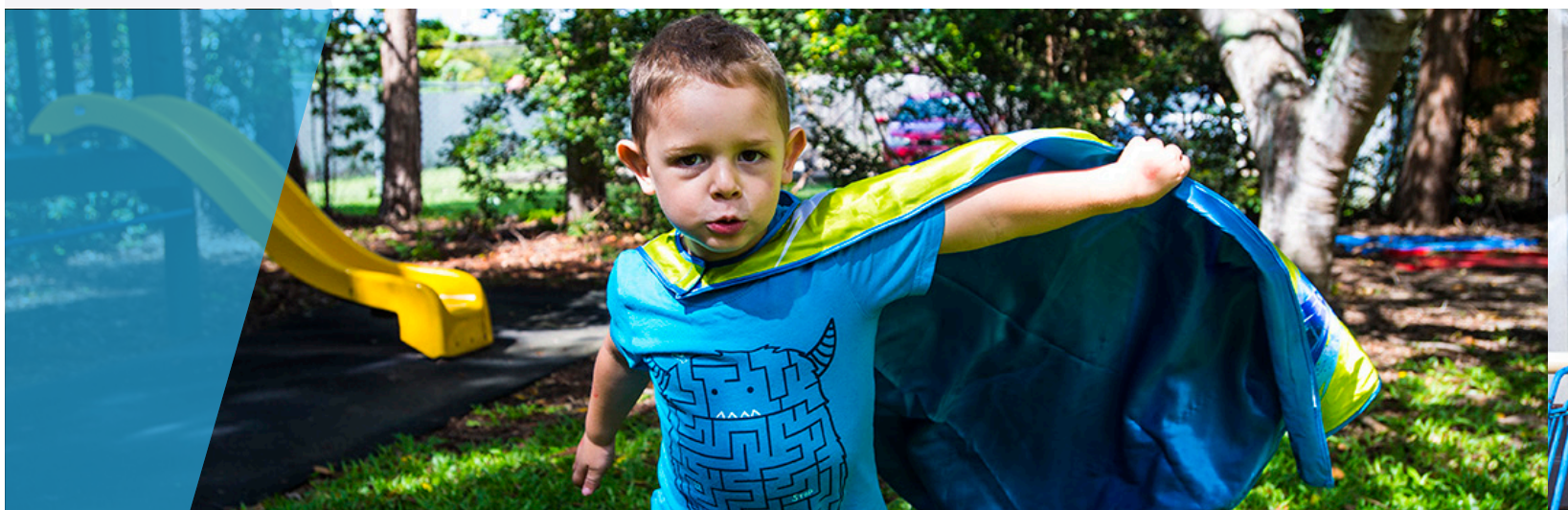
We acknowledge the visionary and dedicated work of the Logan Together Backbone Team who led these achievements.

I acknowledge the generosity of Griffith University through their significant investment; our funding partners; and the Board Directors who have provided significant time and expertise.

In the coming year, we look forward to continuing to develop Logan Together as a flagship place based model for improving the lives of children and families in Logan.

A handwritten signature in cursive script that reads "Cath Bartolo".

Cath Bartolo
Chair of Logan Child Friendly
Community Consortium Trust





MESSAGE FROM THE CHAIR OF THE LEADERSHIP TABLE

Logan Together is an initiative that requires us to engage our hearts and minds in equal measure. We have been clear from the outset that the big goals we have set for ourselves are grounded in research, and our success will be measured by data on the outcomes achieved at a population level in the Logan community.

This year has been about connection. We have brought together some of the data and resources for our partners to use in their work, we have brought people together in some fantastic events – including the inaugural Logan Get Together and the Resource Kit Launch – and we are starting the new financial year in a great place so that we can continue delivering on projects and launch those which are currently in the planning stages. The projects you will read about in this annual report have been chosen in collaboration with community and the sector and we've got passionate teams behind them to make them work. I have high hopes for them and their impact upon the Logan community.

It has been wonderful to see the opening of the Maternity and Child Health hubs and hear such wonderful things about them since they opened their doors. Similarly, the opening of the Samoan Immersion Kindy.

The Kindy Conversations are happening all over the city, and Enrol for Prep messages in businesses and community organisations across Logan, are just some of the tangible ways this movement is making an impact for families.

The coming year will be crucial for Logan Together to deliver on the promise of ensuring 5000 more Logan children get the best start in life possible.

Logan Together is an initiative with heart, and this is – in many respects – its point of difference. We have been challenged this year to grow and develop this part of our work, and we will rise to that challenge in the year ahead.

Margaret Allison
Leadership Table Chair





ABOUT LOGAN TOGETHER

Logan Together uses collective impact and community leadership to grow Logan's kids up well. The goal is to give Logan kids aged zero to eight every chance to achieve their potential and uniting people from diverse organisational and personal backgrounds in a whole-of-community movement. Powered by a dedicated backbone team, the movement mobilises resources and work to ensure every child gets the support they need to be the best they can be.

We believe in the power of community – and in fact, we want community to lead Logan Together. Those who live in Logan know it best, and we believe in co-design. You'll see community members working in partnership with community organisations, NGOs and government across everything we do.

Logan Together includes teachers, health professionals, politicians, policy makers, parents, carers, CEOs, volunteers, social workers, spiritual leaders, government workers, young people, researchers, Elders, early childhood professionals, librarians, Council workers, business people and just about everyone else you can think of.

WE BELIEVE WE CAN DO THE THINGS THAT HELP KIDS REACH THEIR POTENTIAL.

WHAT IS COLLECTIVE IMPACT?

We are using Collective Impact to organise our efforts, and structured community engagement and empowerment to drive our work.

Collective Impact is a framework used to facilitate and achieve long term social change by bringing organisations together across sectors to focus on a common agenda and to put the community in the driver's seat.

The approach uses data and evidence-based research to help communities develop shared goals and a plan of action based on need and impact.





OUR VISION

By 2025, if we can assist an extra 5,000 Logan kids to arrive at 8 years old in great shape, we'll have achieved our goals.

We need to do things at every age and stage of childhood, and we need to strengthen communities and support families too. Part of our vision is to build a long-term community movement where everybody knows lots about child development and values kids. We want to see changes in the way governments design and spend their social investment dollars, and more devolved decision making, at the local level, with a meaningful role for the local community in decision-making.



WE NEED TO DO THINGS AT EVERY AGE AND STAGE OF CHILDHOOD, AND WE NEED TO STRENGTHEN COMMUNITIES AND SUPPORT FAMILIES TOO.

WHO IS LOGAN TOGETHER?

Logan Together is everyone who cares about the future of Logan's kids.

It's a collaboration between the community, service providers, community organisations, government partners and the business community to ensure our kids grow up as healthy and full of potential as any other group of Australian kids.

There are things to do at each age and stage of childhood that will make a difference. Logan Together's role is to make those things a reality in the lives of every child in our city.

We are now three years into this project.

Our 2017/2018 Funders



Australian Government
Department of Human Services



Queensland
Government



LOGAN
CITY COUNCIL



Griffith
UNIVERSITY
Logan campus



Dusseldorp
Forum



THE
SALVATION
ARMY



ten2
foundation



The
Bryan
Foundation



vff
Vincent Fairfax Family
Foundation



OPPORTUNITY
CHILD

COLLABORATION ARRANGEMENTS

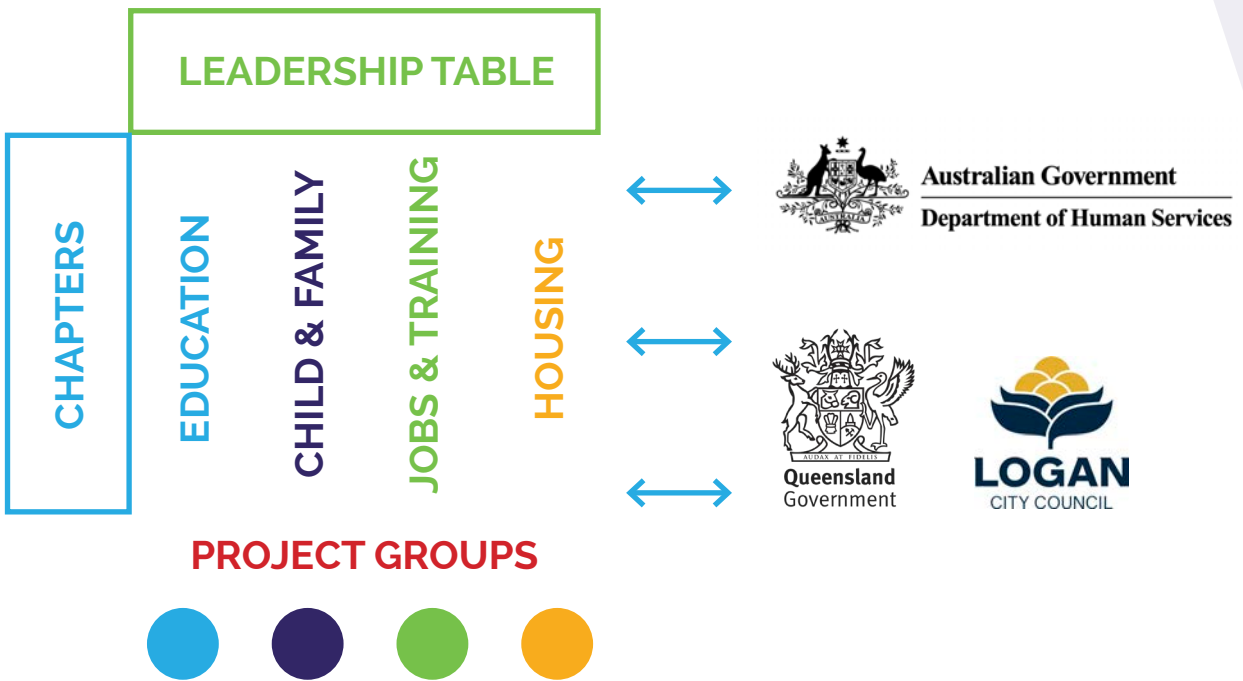
Logan Together has some formal governance and accountability arrangements that ensure the sound administration of the movement.



PROJECT GOVERNANCE



To bring the efforts of many partners to bear in a coordinated way, Logan Together has developed collaboration arrangements that can be best summarised in the diagram below.



THE LOGAN CHILD FRIENDLY CONSORTIUM TRUST

Logan Together's funds are held by the Logan Child Friendly Community Consortium Trust. Trust directors join with others to double as a Management Committee for the Backbone Team.

The Logan Child Friendly Community Consortium Trust receives funds from our Funders and then gifts these to Griffith University as the host organisation for Logan Together. This arrangement ensures 100% of funds go directly to the movement.

THE TRUST IS OVERSEEN BY A BOARD OF DIRECTORS WHO ARE JOINED BY THE PRO-VICE CHANCELLOR OF GRIFFITH UNIVERSITY TO FORM A MANAGEMENT COMMITTEE WHICH GUIDES THE WORK OF THE BACKBONE TEAM.



OUR TRUST DIRECTORS



Cath Bartolo,
Chair

Cath has worked in Logan City for 28 years and currently leads YFS, a not-for-profit organisation that has operated in Logan City for 34 years. YFS delivers a range of services to the people of Logan and beyond, including assistance with housing, domestic and family violence, relationships, mental health, legal, money management and more. Cath is a member of the Logan City of Choice Leadership Team.



Dr Geoff Woolcock,
Director

Geoff Woolcock is a Senior Research Fellow at the University of Southern Queensland's Institute for Resilient Regions, and an Adjunct Associate Professor at Griffith University's School of Human Services and Social Work and QUT's Centre for Children's Health.



Brit Ibanez,
Director

Brit is a Partner with law firm McMahon Clarke. Brit's areas of expertise include advising responsible entities and trustees on the operation and management of their schemes, resolving shareholder oppression actions, advising directors about their potential liability in advance of making board decisions, acting for parties in joint venture and partnership disputes, financial services disputes, and conducting litigation about disputed contract rights and obligations.



Michael Tizard,
Director

Michael is a social worker with over 30 years' experience in the child and family services sector, and has worked in both government and non-government organisations. He has worked in statutory child protection, family support, parenting and early childhood education and care, as a practitioner, senior manager and in executive roles. Michael is currently CEO of C&K Kindergartens. (Retired 2018).



Margaret Allison,
Director

Margaret has over 35 years' experience in state and local government, including roles as the Chief Executive of the Public Service Commission and Director-General of the Department of Communities, Child Safety and Disability Services. She retired from public service in late 2013. Margaret was appointed as a Fellow of the Institute of Public Administration Australia in 2008, and is also appointed as an Adjunct Professor in the School of Business and International Relations at Griffith University.



Lesley Chenoweth,
Griffith University
Representative on the
Management Committee -
Pro-Vice Chancellor and Head of
Campus Professor (retired 2017)

Lesley Chenoweth AO, BSocWk, MSocWk, PhD was formerly the inaugural Professor of Social Work and in 2011 became ProVice Chancellor and Head of Logan Campus at Griffith. She has many years experience as a social work and human service practitioner, academic and activist chiefly in the disability area.



COMMUNITY LISTENING

Building up the capacity and resourcing within the Community Engagement team was a major focus in 2017/18, laying the foundation to ensure the community is a main driver in Logan Together's work. The appointment of a Deputy Director overseeing the community engagement team, as well as recruiting for a Community Engagement Coordinator, and the development of a Community Connection and Engagement Strategy in April placed community engagement squarely in the spotlight.

The Community Connection and Engagement Strategy provides a practical way to bring together the people of Logan, community organisations, and governments, so that they can work together and make better decisions. It is built around four focus areas:

- 1 GOING WITH LOCAL ENERGY
- 2 AFFECTING DECISIONS OF GOVERNMENT AND ORGANISATIONS,
- 3 COMMUNICATION, AND
- 4 GETTING OUR HOUSE IN ORDER.



And we have elected on the belt for many of these goals.

OUR ROADMAP

We'll know we are making progress if we are closing the gap in the following areas:

THE 10 YEAR PLAN TO HELP 5,000 MORE LOGAN KIDS THRIVE BY AGE 8

READY TO HAVE KIDS



70 fewer very young parents p.a
215 more young people completing year 12 p.a
Increase in parents employed prior to parenting

Priorities

- ▶ Developing aspirations for life after school
- ▶ Completing education prior to parenting
- ▶ Gaining employment prior to parenting
- ▶ Reducing smoking

GOOD START IN LIFE



BIG RESULT PROOF POINT: HEALTH STATUS AT BIRTH

57 fewer babies born before 36 weeks p.a
118 fewer babies born with a low APGAR score p.a
19 fewer babies with a birth weight below 2500g p.a

Priorities

- ▶ Healthy habits during pregnancy and after birth
- ▶ Strong attachment with baby, nurturing, rich talk
- ▶ Boosting access to care for parents and baby
- ▶ Social/emotional wellbeing for all the family
- ▶ Helping families prepare for parenthood

ON TRACK AT 3 YEARS



BIG RESULT PROOF POINT: DEVELOPMENTALLY ON TRACK

We are looking at how best to measure this

Priorities

- ▶ Learning through play
- ▶ Reading, talking and singing
- ▶ Clear, kind parenting
- ▶ Detecting health or development problems early
- ▶ Maintaining social connection
- ▶ Social and emotional wellbeing for all the family

FAMILY FOUNDATIONS



Priorities

- ▶ Jobs and employment
- ▶ Secure housing
- ▶ Family safety
- ▶ Social/emotional wellbeing for all the family
- ▶ Parents feel knowledgeable and confident

STRONG COMMUNITY



Priorities

- ▶ Social connection
- ▶ An empowered community

ON TRACK AT 5 YEARS



BIG RESULT PROOF POINT: DEVELOPMENTALLY ON TRACK

329 fewer kids developmentally vulnerable p.a
 55 more kids on track in physical health p.a
 104 more kids on track in social competence p.a
 116 more kids on track for emotional wellbeing p.a
 148 more kids on track in language and cognitive development p.a

Priorities

- ▶ Attending a quality kindergarten program
- ▶ Learning through rich play, talking and reading
- ▶ A good home learning environment
- ▶ Successfully transitioning to school
 - ▶ Social and emotional wellbeing
- ▶ Being healthy and physically active

ON TRACK AT 8 YEARS



BIG RESULT PROOF POINT: YEAR 3 NAPLAN

241 more students achieving above the minimum standard on average p.a
 541 more students achieving in the top two bands on average p.a

Priorities

- ▶ Engaged in learning
- ▶ Supported at school
- ▶ A good home learning environment
- ▶ Social and emotional wellbeing
- ▶ Healthy and physically active

EFFECTIVE SYSTEMS



Priorities

- ▶ Social investment reform
- ▶ Child development workforce strategies
- ▶ Multi-agency service integration



LOGAN TOGETHER ROADMAP PROJECTS

...And we have projects on the boil for many of these goals.

	READY TO HAVE KIDS	GOOD START IN LIFE	ON TRACK AT 3
NOW (2019)		<p>Community Maternity Hubs</p> <p>Build transdisciplinary connections</p> <p>Establish a new hub with the Pasifica community</p>	<p>The First Three Years</p> <p>Facilitate community conversations and research to identify priorities for families</p> <p>Test with community</p>
	FAMILY FOUNDATIONS		A STRONG COMMUNITY
	<p>Backing Young Parents</p> <p>Identify practice models that work</p> <p>Build connections with pregnant young women and the Maternity Hubs</p> <p>Coordinate service connection with young parents</p> <p>Strong Parenting program</p> <p>Ensuring that the main messages for each age and stage from pregnancy to age 8 are provided to all parents clearly and in a useful way</p>	<p>Community Gateways</p> <p>Research local and international best practice and sustainable models: Child and family centres, school hubs, neighbourhood/community centres. Seek support to establish Community Gateways Strategy</p> <p>Community Mobilisation Campaign</p> <p>Implement positive marketing campaign directly to parents/carers to support behaviour change across the key messages of Logan Together</p> <p>Children Together</p> <p>Build a city-wide commitment across Logan as a Child Friendly City; Establish the Children's Charter</p>	

ON TRACK AT 3

Early Years Neighbourhood Networks

Build transdisciplinary connections focusing on networks with coaches

ON TRACK AT 8

Full Service Early Years + Schooling Model

Seek support for establishing full service, interdisciplinary schooling models

EFFECTIVE SYSTEMS

Service Integration and Social Investment Reform

Work with service providers to identify opportunities for collaboration (issues and neighbourhood level)

Work with government partners and CSIA to establish methodologies for investment reform and integration

Conduct trial projects - EYNN, Family Support

Parents Next Collaboration

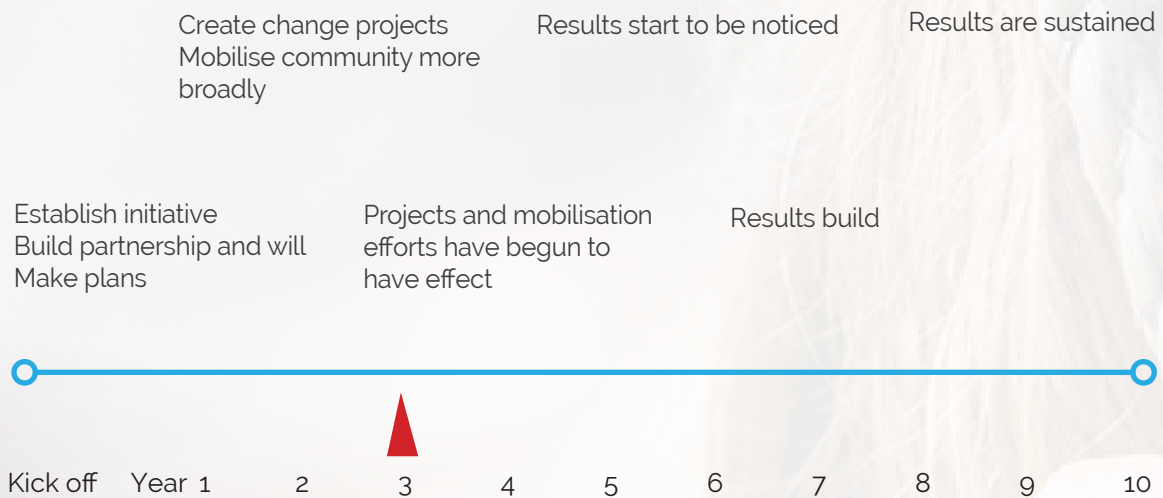
Build collaboration amongst services delivering ParentsNext to remove barriers to employment for clients, improve efficiency and outcomes.

WE BELIEVE WE CAN DO THE THINGS THAT HELP KIDS REACH THEIR POTENTIAL.

OUR PROGRESS

WHERE ARE WE ON THE JOURNEY?

**WE ARE ESTABLISHED... WE HAVE SUPPORT...
WE'RE STARTING TO MOBILISE THE COMMUNITY...
AND WE'RE ALREADY SEEING SOME CHANGES.**





NEW LOGAN TOGETHER RESOURCES

LOGAN TOGETHER SUBURB PROFILES

What's the most common profession in Jimboomba?

How many two-year-olds live in Beenleigh?

What's the average age of the population of Marsden?

How do the people of Daisy Hill travel to work?

These, and dozens more questions, can be answered in the Suburb Profiles produced by Logan Together – designed to inform community-based work and provide an insight into the unique patterns in each suburb.

With 217 cultures represented in Logan, as well as a city-meeting-country diversity, plus areas of enormous growth, Logan as a whole paints a dizzying picture. This is why, to help guide community activity and planning for business and service investment at the local level, breaking it down to suburb level is so important.

Logan Together Backbone Team Director Matthew Cox said the profiles were produced to break down the masses of information available about Logan as a city.

"This gives such a great insight into each area of Logan which is so important in such a diverse city with more cultures than New York City – and a wide range of socioeconomic backgrounds and families," he said.

"We have always had lots of data and information at a Logan population level and what people really wanted to do was look at communities within Logan and compare suburbs to assist with work on the ground. "We have information on the demographic using 2016 ABS data information on AEDC from 2015 as well as NAPLAN results, crime statistics and more."



LOGANLEA SUBURB PROFILE



HERITAGE PARK SUBURB PROFILE



WATERFORD WEST SUBURB PROFILE

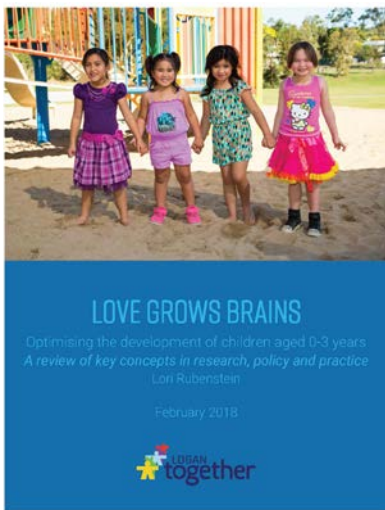




SUMMARY STATE OF LOGAN

All of the data that we can find in the one place, to help direct our efforts for maximum impact, including:

- How many children live in Logan, and in which suburbs (referencing SA2s)
- Logan's cultural and language characteristics (taken from Census data)
- Household and family statistics (referencing ABS data)
- Logan's growing population and what this looks like
- Employment and income data, broken down into Logan suburbs (ABS and Census)
- Data around key life stages (ie pregnancy and school), by suburb and rank ordered (SA2s, AEDC and NAPLAN)



LOVE GROWS BRAINS

Love Grows Brains – named after the child-focused campaign in New Zealand, with thanks to the Wright Family Foundation – is a comprehensive literary review, containing:

- What research tells us about early child development
- What parents and caregivers can do
- What communities and services can do
- What design research can do
- What public policy can do



LOGAN TOGETHER PROJECTS

PROJECT NAME: COMMUNITY MATERNITY AND CHILD HEALTH HUBS

OBJECTIVE:

Aims to ensure that women access quality care from early in pregnancy to birth and beyond; families have easy access to a range of relevant and trusted support services, and services points are integrates into the community and focus on wellbeing and personal connections.



STAGE IN ROADMAP: **READY TO HAVE KIDS**

APPROACH:

In response to the large number of local women not accessing care from traditional services, for a range of reasons, and some passionate and driven community members, this project came together because of the unwavering belief, commitment and hard work of a wide range of partners (including local families) who feel passionately about the importance of this service.

This project has been close to the heart of many in the Logan community since the project group formed in 2015 and offers women a community-based space for them to receive continuous care throughout their pregnancy.

PARTNERS:

The team at Metro South Health and host partners ATSICHS, Access and Benevolent Society put their heart and soul into making the project happen.

PROGRESS:

Logan's first three Community Maternity and Child Health Hubs were launched in April 2018, officially opened by Health Minister Steven Miles.

NEXT STEPS:

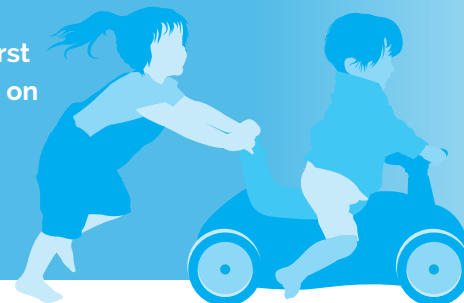
It is hoped that the maternity services continue to be supported and grow in capacity, and that more can open throughout Logan in the coming years.

The hubs are located at ACCESS Gateway in Logan Central, Browns Plains Early Years Centre, and ATSICHS in Waterford West. Early indicators show excellent medical outcomes, as well as the development of important relationships.

PROJECT NAME: THE FIRST THREE YEARS – EARLY DEVELOPMENT INITIATIVES

OBJECTIVE:

While the first eight years of life are crucial, it is particularly the first three years – or 1,000 days – which can really have a huge impact on the rest of a child's life. We aim to identify the key issues facing babies and toddlers and work with families to ensure this is a time of nurturing, growth and setting the foundations for a great life.



STAGE IN ROADMAP: GREAT START IN LIFE/ON TRACK AT 3

APPROACH:

The approach is led by community and focusses on language, literacy and brain development in babies, toddlers and young children; parental skill building and engagement from cohesive, trusted sources; social and emotional wellbeing focus for carers and children, and Welcoming community places that serve as a front door for support.

PARTNERS:

ParentsNext providers, ECEC's across Logan, community gateways, corporate partners, and foster carer networks.

PROGRESS:

The Kindy Conversations, based around the Kindy Guide, have kicked off with families throughout the city, and community engagement has commenced on how else we can best support families throughout Logan within a broader context.

NEXT STEPS:

Logan Together is working with our partners to develop a holistic approach which not only focusses on kindy attendance but also identifies other opportunities for early learning and development to take place outside a formal structure. Community led activities such as playgroups, neighbourhood centres and community hubs will all play a major part in this project.



LOGAN TOGETHER PROJECTS

PROJECT NAME: EARLY YEARS NEIGHBOURHOOD NETWORKS

OBJECTIVE:

Led by Education Queensland, the goal of the Neighbourhood Networks is to bring together representatives from community, health and education to collaborate at a suburb level, so that the challenges faced by the community can be addressed in a streamlined way, with professionals and communities working together to find local solutions.



STAGE IN ROADMAP: STRONG COMMUNITY

APPROACH:

This project is based on collaboration between representatives from community, education and health, and the principle that our community needs strong school and ECEC networks, a well-supported early education workforce, and access to trusted health and social supports.

PARTNERS:

This project is being led by Education Queensland.

PROGRESS:

Three early adopted sites include Eagleby, Yarrabilba and Kingston/Marsden.

These EYNNs provide a much needed level of support for the community. The networks includes local primary schools and their feeder early childhood education centres. It includes 10 early childhood leaders in a funded leadership program and two teachers in community hubs to support refugee and migrant students.

NEXT STEPS:

The project will allocate a coach to each EYNN. Coaches will begin to take the load of the principal and manage the network.

Recruitment has commenced for a lead for this initiative with health partners, non-government organisations and the community.

PROJECT NAME: COMMUNITY MOBILISATION CAMPAIGN

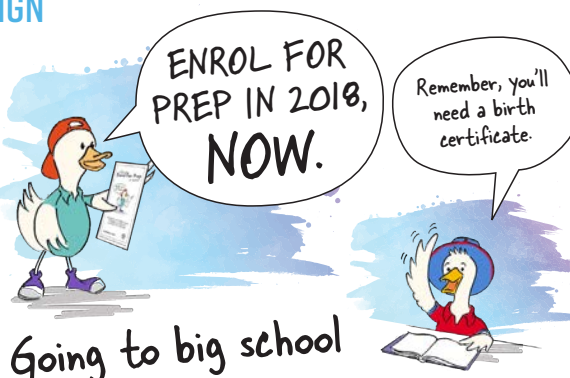
OBJECTIVE:

Engaging the community with the Early Years social marketing brand will create strong, grass roots, peer-to-peer engagement and build community-wide knowledge about child development and the things that matter for kids

STAGE IN ROADMAP: STRONG COMMUNITY

APPROACH:

Enrol for Prep and Kindy Conversations were the two major Community Mobilisation campaigns in 2017/18.



If your child was born between 1st July 2012 and 30th June 2013, contact your local school to enrol for prep.



The Enrol to Prep campaign was designed to reduce the number of children facing this delay in starting their school year.

A suite of materials was developed and shared across Logan Together partners, and included a Starting School Checklist, We Are Ready For Big School poster, and localized postcards with contact details for schools in each local area.

These were distributed at local community events and fun days, and by Logan Together partners who work with families.

A partnership with a local McDonald's franchisee, who manage stores in five locations across Logan, ensured these stores displayed the Enrol For Prep posters and checklists – and distributed postcards to local families purchasing specific meals at peak times.

The **Early Years Family Guide** and the **Kindy Conversations** which accompany them launched in January 2018, after a process of conversation, collaboration and "Kindy conversation training".

Kindy Conversations were borne out of a desire to create a community-wide approach to increasing awareness about the benefits of kindy for young children. As many as 2,000 pre-school age children in Logan don't attend kindy at all.

The Family Kindy Guide was developed with the assistance of the education sector, human services sector, government representatives, faith groups and community members. The guides include help with childcare rebates, enrolments, questions to ask to decide which kindy is right for a family, checklists, information about the benefits of kindy and more.

After the guide was developed and approved, Kindy Conversations Training sessions were held with professionals throughout Logan who work regularly with families. These professionals were guided through the Kindy Family Guide, so that they felt equipped to have conversations with families when needed.

NEXT STEPS:

As we continue with Enrol for Prep and Kindy Conversations, we will also evaluate the outcome of these projects and adjust as and when needed.

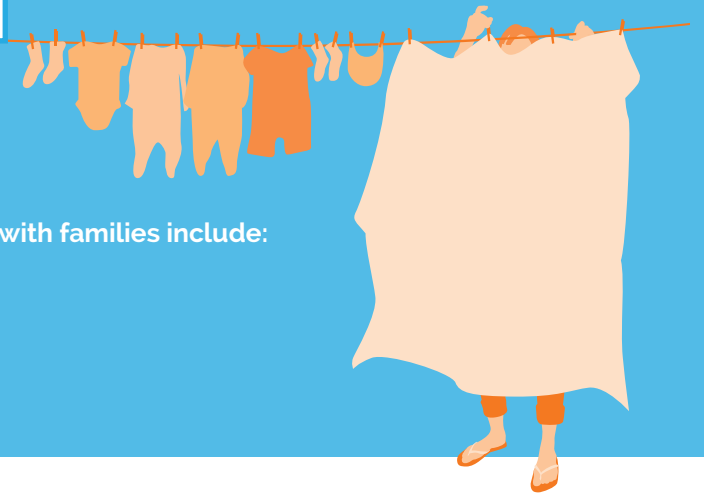
LOGAN TOGETHER PROJECTS

PROJECT NAME: JOBS FOR FAMILIES PROJECT

STAGE IN ROADMAP: FAMILY FOUNDATIONS

Projects planned – and not yet commenced - to work with families include:

- Under-19s Parent Project
- Jobless Families Project
- Parents Next service development projects
- Try Test Learn responses



PROJECT NAME: SOCIAL INVESTMENT AND SERVICE INTEGRATION REFORMS

STAGE IN ROADMAP: EFFECTIVE SYSTEMS

To enable effective, long-term solutions, we need:

- Federal, state and local investment reform
- Multi-agency service integration
- Reforms to promote alignment of resources
- A focus on social inclusion, engagement



PROJECT NAME: NDIS STRATEGIC LEARNING GROUP

OBJECTIVE:

With the rollout of the NDIS imminent, the NDIS Strategic Learning Group was formed to identify evidence-based issues and challenges for Logan kids and their families that require systems improvement and make change.

STAGE IN ROADMAP: EFFECTIVE SYSTEMS

APPROACH:

The main areas of focus for the group were to build a network for collaborative action and to coordinate a city-wide engagement and empowerment campaign.

The NDIS Strategic Learning Group was working closely with Logan City Council, who were focussing items for older children, over 8 years.

Information and session dates and times were also featured on the Logan Together website and promoted through a range of social media channels.

NEXT STEPS:

As the NDIS is rolled out through Logan, members of the group will continue to liaise on an as-needs basis, with support from the Logan Together Backbone Team.

PROJECT NAME: PARENTSNEXT COLLABORATION

OBJECTIVE:

Collaboration between the seven providers of the ParentsNext program across Logan.



STAGE IN ROADMAP: EFFECTIVE SYSTEMS

APPROACH:

ParentsNext is a mandatory Federal Government readiness for work program designed to help parents with young children enter or re-enter the workforce when their youngest child starts school. The service providers across Logan who are delivering the program are working with Logan Together to identify ways they can remove barriers to employment for their clients while also improving efficiency and outcomes.

PROGRESS:

A variety of collaborative improvement projects are being pursued, including a common intake and assessment.





LOGAN TOGETHER PROJECTS

PROJECT NAME: COMMUNITY GATEWAYS

OBJECTIVE:

For all community based hubs in Logan to collaborate to develop a shared conceptual model with strong underpinning policies and principles that can be applied flexibly at different scales.

STAGE IN ROADMAP: STRONG COMMUNITY

APPROACH:

Community Gateways, or centre-based services providing soft-entry to social inclusion activities for families in Logan also provide connections for families if needed. There are more than 20 centre-based gateways in Logan including neighbourhood centres, community hubs, early years centres, maternity hubs, Communities for Children hubs and the Access Gateway hub.

PARTNERS:

Logan's community gateways, local Aboriginal Elders, local government, Griffith University, Logan Together Leadership Table, and Logan Together Backbone Team.

PROGRESS:

A discussion paper has been developed and a working group formed with representatives from all of the hubs in Logan. The first steps have been developed and include an investment plan, strategic learning framework, and shared measurement approach.

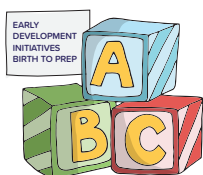
Along with the six major projects which were listed as priorities at the beginning of 2018, there are a number of other important projects being led by our partners.

ALONG WITH THE SIX MAJOR PROJECTS WHICH WERE LISTED AS PRIORITIES AT THE BEGINNING OF 2018, THERE ARE A NUMBER OF OTHER IMPORTANT PROJECTS BEING LED BY OUR PARTNERS.



FIRST 5 FOREVER

First 5 Forever is a government funded community program aimed at supporting parents and carers in their roles as their children's first and most important teachers. The program is thriving in Logan with a range of free sessions at Logan City Libraries and other community spaces, sparking a joy of learning in babies and children across the City.



SAMOAN IMMERSION KINDY

A new kindergarten program in Logan is giving Samoan children access to a crucial early learning program with a focus on language and culture.

The new kindergarten room, at Goodstart Crestmead, Third Avenue is run by two experienced Samoan speaking educators who focus on developing the language skills and cultural understanding of the children as well as a fully accredited program. The kindergarten program was developed in a partnership between Goodstart Early Learning, Hosanna Logan City and Logan Together. It was based on community aspirations, organisational collaboration, and a willingness to think outside the box to create something which improves outcomes for children.



Logan's Little Learners

Logan's Little Learners focusses on creating and supporting opportunities for children to develop a love of reading, for parents to learn skills to help develop their child's early literacy and identifies opportunities for early intervention when developmental support is required.



Children Together

This project is focussed on creating a culture that protects and values the social and emotional wellbeing of children. Based on the Unicef Child Friendly Framework the project is working to ensure the rights of children are reflected in policies, laws, programs and budgets. A Children's Charter is also being drafted to encourage businesses in Logan to commit to being child friendly.

Young Parents Project

Through their work in the community, the Young Parents project group identified the need to provide some additional support to women who are embarking on their parenting journey under 19 years of age.

After talking to service providers and young parents, the group saw the need for a "goodie bag" designed specifically to help young people receive information and practical items that would assist them as they began their vital roles as mums.



Logan Hospital receives approximately 300 young mums each year. The group sought and gained support from community groups and sector representatives from across Logan, to distribute these bags to young parents in Logan Hospital.

The bags included information on support groups and services in the Logan area as well as fact sheets and practical items.



EVENTS

THE LOGAN GET TOGETHER

The Logan Get Together was held on 5 October 2017, and attracted attendees from the length and breadth of the community sector as volunteers, government policy makers, service providers and political representatives from all levels of government rubbed shoulders and learned from the best.

More than 330 people attended, listening to keynotes like Rich Harwood, founder of The Harwood Institute, and Professor Sharon Goldfeld of the Murdoch Children's Research Institute, as well as representatives from all level of governments. Participants also took part in table talks with community leaders and those people who are on the ground working with and for community. The Backbone Team and members of the Logan Together Movement were buzzing after this event, the first of its kind and one which made a lasting impression on all who attended. In a follow-up survey, 95% of responders said they would attend future Logan Get Together events, and 89% said the event delivered on their expectations.

Logan Get Together Breakout Sessions

Integrated Approaches to the Early Years with Maree Stuart, Goodstart Early Learning, Kristy Tomlinson, Challis Community Primary School, Bev Fluckiger, Griffith University and facilitator Michael Tizard, C&K.

How to Start a Revolution (sort of) With a Good Idea with John Anderson and Facilitator Pete Cunningham, Redsuit Advertising.

Collective Impact Across the Country with Rodney Greene, Burnie Regional Council, Tasmania Karen Cieri, Sanderson Alliance + Centre for School Leadership, Northern Territory David James, Opportunity Child, Australian Capital Territory Margot Beach, Dusseldorp Forum, New South Wales (Facilitator).

Logan Together Table Talks

- Maternity Hubs in Community: Debbie Cowen, Metro South Health, and Melissa Fox, Health Consumers Queensland
- Community Engagement Model & Community Listening: Matt Statham + Karen Dawson-Sinclair, Logan Together Backbone Team
- The Early Years Kindy Challenge: Penny Goodall, Communities for Children
- Trauma Informed Practice: Kerri Chard, Queensland Department of Education
- Community Hubs in Schools: Grainne Taia, Access Community Services
- Sure Steps - a 2 Generations Model: Christine Grose, YFS
- The Story of Logan MUMS n' BUBS: Nat Millar, Community Representative
- Queensland Governments' Response to Logan Together: Queensland Department of Communities
- Growing Great (Grand) Dads: Geoff Woolcock, Griffith University
- Organising the Community Queensland Community Alliance
- Early Years Networks + Transdisciplinary Support proposal: Sheryle Croft, Queensland Department of Education + Training
- Children Together: Creating A Child Friendly Community: Giselle Olive, Centre for Children's Health and Wellbeing + Geraldine Harris, Griffith University
- Listen 2 Connect: Erin Searle, Logan City Council
- Logan's Promise Project + Their Trip to the Harlem Children's Zone: Sharyn Angel, Shailer Park High School
- Rumble's Quest – an Interactive Measure of Children's Wellbeing: Kate Freiberg, Griffith University
- Building a Thriving Early Years Neighbourhood Network: Landan Dare, William Duncan State School

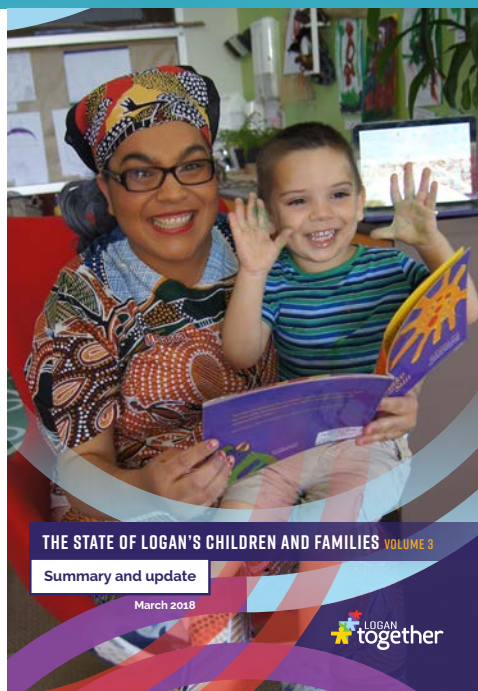


"KEEP UP THE AMAZING WORK YOU BUNCH OF ABSOLUTE LEGENDS!"



RESOURCE KIT LAUNCH

At the beginning of 2018, the Backbone Team released its Annual Report, new edition of the Summary State of Logan, Suburb Profiles, new website and Love Grows Brains at the Resource Kit Launch. Held across two dates and venues – one in Logan and one in Brisbane City – the launches were extremely well-attended, giving guests the chance to hear more about the resources and how they could be used to better meet the needs of Logan families.



"EVERYTHING IS IN PLACE AND THIS HAS SO MUCH POTENTIAL – YOU HAVE SOMETHING REALLY PRECIOUS HERE IN LOGAN."

Mark Cabaj
Leader and co-director of the Tamarack Institute, Canada

INDUCTIONS

Keeping everyone informed, inspired and aware of the progress in the Logan Together movement is an important part of what we do. It is also important to connect people who might do great work together, and to introduce the movement those new to partner organisations in Logan. The Logan Together Inductions began in early 2018, and provide a succinct overview of the Logan Together movement, how it came to be, what we aim to do, where we are in the journey and how those attending fit in to that journey.

Inductions will be held roughly three times a year.

WHO we are

WHY we are here

WHAT we are doing

WHEN we are doing it



..... **And HOW** we will achieve it

MARK CABAJ Tamarack Institute, Canada.

In May, collective impact thought leader and co-director of the Tamarack Institute Mark Cabaj, came to Brisbane all the way from Canada for a presentation to Logan Together partners, (for which all tickets were snapped up in less than a day), and a workshop with the Backbone Team.

Mr Cabaj, who has seen similar attempts efforts attempted in communities around the world, said the three-year-old Logan effort shone.

"Everything is in place and this has so much potential – you have something really precious here in Logan," he said.

"The early bird gets the worm but the second mouse gets the cheese – and what I think has been done particularly well in Logan, is that you have leapfrogged a lot of the early collective impact efforts in the States, and you are operating at a level of sophistication – particularly in data and organisation – that we haven't witnessed often in North America."



PARTNERSHIPS

CELEBRATING THE WORK OF LOGAN TOGETHER PARTNERS

The Collective Impact approach of the Logan Together movement means that every project being driven by our partners, based on the energy of our community, is moving us closer to achieving our shared goal of creating the best life opportunities for kids in Logan.

AEIOU CENTRE

The AEIOU Centre at Griffith University opened in 2018, and is part of the innovative Meadowbrook Health and Knowledge Precinct in Logan, which is transforming a suburb into an integrated centre for health, education, research and community. Local families now have close access to a centre catering directly to the needs of young children with autism.

As part of the establishment of the centre, AEIOU is collaborating with Griffith University to create training pathways for disciplines including behaviour therapy, speech and language pathology, occupational therapy and medicine.

Contact: Petrina Smith – petrina.smith@aeiou.org.au

YFS SURE STEPS PROGRAM

Logan Together partners YFS and the Department of Housing and Public Works are trialing a "Family Coach" model through the new Sure Steps program. A Family Coach works holistically with all members of the household to understand aspirations and then work long term to help achieve those goals.

The model has wide implications for service change.

Contact: Christine Grose – Christineg@yfs.org.au

RUMBLES QUEST

In 2017 the Queensland Family and Child Commission commenced a trial using the interactive video game Rumble's Quest to measure the wellbeing of children via selected family support services across Logan.

The game is part of an Australian first suite of online resources developed by staff at Logan Together host and partner organisation Griffith University.

Rumble's Quest gives children the opportunity to report their own feelings and sense of wellbeing as they journey through an interactive universe.

As they progress, the game asks questions designed to obtain a detailed measure of the child's social-emotional wellbeing with results able to be evaluated at an individual, school or community level.

Contact: Ross Homel - r.homel@griffith.edu.au



THE FAMILY PLACE APPROACH

Logan Together partners The Salvation Army and Griffith University have collaborated to develop a unique approach to creating safe community spaces for children and parents. The Family Place Approach utilises soft entry universally accessible programs for children and families and creates a culture of safety for children, parents and other practitioners.

The Approach is embodied in the Family Place community space at Woodridge where free activities and support are offered to families in Logan. The service offers a range of different programs, including playgroups, literacy groups, drop in health clinics, family fitness programs and support for fathers including a Dad's Playgroup.

Contact: Mindy Russell - m.russell@candk.asn.au

ACCESS GATEWAY COMMUNITY HUBS

Increasing social inclusion for new arrivals and refugees settling in Logan is one of the aims of the Access Gateway community hub established by Logan Together partner Access Community Services. Long time Logan residents and new arrivals can connect, interact and build relationships with each other and crucial services at the Gateway which is driven by the lived experiences of refugees and migrants. From English classes and driving lessons to work experiences and legal advice, the Gateway door is open to everyone seeking assistance or advice.

Contact: Grainne Taia - grainnet@acsl.org.au

HOSANNA VILLAGE HUB

Logan Together partner Hosanna Logan City opened The Village Hub in March 2017. The Village Hub is the only community controlled and owned hub designed to strengthen links in the Pacifica and Maori communities in a culturally safe environment.

Run by two pastors within the church, the Village Hub provides a range of services to the community including homework club, playgroups, prison ministry, seniors programs, budgeting assistance, parenting courses and food relief.

Contact: Monica Mamea - monica@hosannalogancity.com.au

ABECEDARIAN ROLL OUT

Abecedarian is a powerful approach to develop language, a key factor in our children's early learning.

The main areas of focus for Abecedarian techniques are the use of: learning games, conversational reading, enriched caregiving, and language priority. These techniques support children to create bonds and attachment with adults from ages 0-1, feel secure and know they're supported when exploring the world from ages 1-3, and use play to explore from ages 3-5. The tools also support healthy emotional, social, and cognitive development in children and babies.

Education Queensland partnered with Logan City Council Libraries to deliver Abecedarian training to early childhood education and care practitioners and community service providers across the City. These professionals can then pass these techniques on to parents and caregivers in the community, including via free Abecedarian playgroups delivered by Kingston East Neighbourhood Centre in Logan City Council Libraries.

FINANCIAL REPORT

Logan Together was well supported in 2017/18 by funders across the government, non-government and philanthropic sectors. The annual accounts are presented in the following pages.

Please note that during the 2017-2018 financial year the structure of the organisation was changed from "Logan Child Friendly Community Limited As Trustee For Logan Child Friendly Community Charitable Trust" to "Logan Child Friendly Community Limited". Accordingly audits of both entities are provided.

LOGAN CHILD FRIENDLY COMMUNITY LIMITED

ABN 57 159 083 217

INCOME AND EXPENDITURE STATEMENT

FOR THE YEAR ENDED 30 JUNE 2018

	2017 \$	2018 \$
Income		
Auspiced funds	386,364	-
Interest Income	162,260	-
Total Income	548,624	-
Expenses		
Logan Together Project	560,000	-
Other expenses	8,271	-
Total expenses	568,271	-
(Deficit)/surplus from ordinary activities before income tax	(19,647)	-
Income tax expense relating to ordinary activities	-	-
Net (deficit)/surplus attributable to the Trust	(19,647)	-
Other comprehensive income	-	-
Total comprehensive income for the year	(19,647)	-

The above financial statement should be read in conjunction with the accompanying notes.

LOGAN CHILD FRIENDLY COMMUNITY LIMITED
ABN 57 159 083 217
BALANCE SHEET
AS AT 30 JUNE 2018

	2017	2018
	\$	\$
Liabilities		
GST Payable	19,647	-
Total Liabilities	19,647	-
Net Liabilities	19,647	-
Equity		
Accumulated surplus	19,647	-
Total Equity	19,647	-

The above financial statement should be read in conjunction with the accompanying notes.



FINANCIAL REPORT

LOGAN CHILD FRIENDLY COMMUNITY LIMITED
ABN 57 159 083 217
STATEMENT OF CHANGES IN EQUITY
FOR THE YEAR ENDED 30 JUNE 2018

	Accumulated Deficit \$	Total Equity \$
2017		
Opening Balance	-	-
Surplus for the year	-	-
Closing Balance	-	-
2018		
Opening Balance	-	-
Deficit for the year	(19,647)	(19,647)
Closing Balance	(19,647)	(19,647)

The above financial statement should be read in conjunction with the accompanying notes.



NOTE 1 – STATEMENT OF SIGNIFICANT ACCOUNTING POLICIES

The financial statements are special purpose financial statements that have been prepared for the purpose of complying with the Australian Charities and Not-for-Profit Commission Act 2012 and the Australian Charities and Not-for-Profit Commission Regulation 2013.

The financial report has been prepared on an accruals basis and is based on historical costs and does not take into account changing money values or, except where stated, current valuations of non-current assets. The accounting policies have been consistently applied, unless otherwise stated.

The financial statements have been prepared on a going concern basis which contemplates the continuity of normal business activities and the realisation of assets and settlement of liabilities in the ordinary course of business.

The financial statements have been prepared in accordance with the requirements of the following Australian Accounting Standards.

- AASB 101 Preparation of Financial Statements
- AASB 108 Accounting Policies, Changes in Accounting Estimates and Errors
- AASB 110 Events after the End of the Reporting Period
- AASB 1048 Interpretation and Application of Standards
- AASB 1054 Australian Additional Disclosures

No other applicable Accounting Standards, Australian Accounting Interpretations or other authoritative pronouncements of the Australian Accounting Standard Board have been applied

NOTE 2 - INCOME TAX

The entity is tax exempt and is not required to assess or report for income tax purposes.

NOTE 3 - REVENUE

Grant revenue is recognised when the entity obtains control of the grant and it is probable that the economic benefits obtained from the grant will flow to the entity and the amount of the grant can be measured reliably.

NOTE 4 - COMMITMENTS

The company receives funding for the Logan Together project. Under an agreement with Griffith University, the company has to remit quarterly funding to Griffith to cover the costs of this program.

FINANCIAL REPORT

Logan Together was well supported in 2017/18 by funders across the government, non-government and philanthropic sectors. The annual accounts are presented in the following pages.

Please note that during the 2017-2018 financial year the structure of the organisation was changed from "Logan Child Friendly Community Limited As Trustee For Logan Child Friendly Community Charitable Trust" to "Logan Child Friendly Community Limited". Accordingly audits of both entities are provided.

LOGAN CHILD FRIENDLY COMMUNITY CHARITABLE TRUST

ABN 57 159 083 217

INCOME AND EXPENDITURE STATEMENT

FOR THE YEAR ENDED 30 JUNE 2018

	2017 \$	2018 \$
Income		
Auspiced funds	756,818	1,480,567
Interest Income	9,869	4,133
Total Income	766,687	1,484,700
Expenses		
Logan Together Project	1,110,000	802,000
Donations to Logan Child Friendly Community Limited	162,260	-
Other expenses	43,747	41,764
Total expenses	1,316,007	843,764
(Deficit)/surplus from ordinary activities before income tax	(549,320)	640,936
Income tax expense relating to ordinary activities	-	-
Net (deficit)/surplus attributable to the Trust	(549,320)	640,936
Other comprehensive income	-	-
Total comprehensive income for the year	(549,320)	640,936

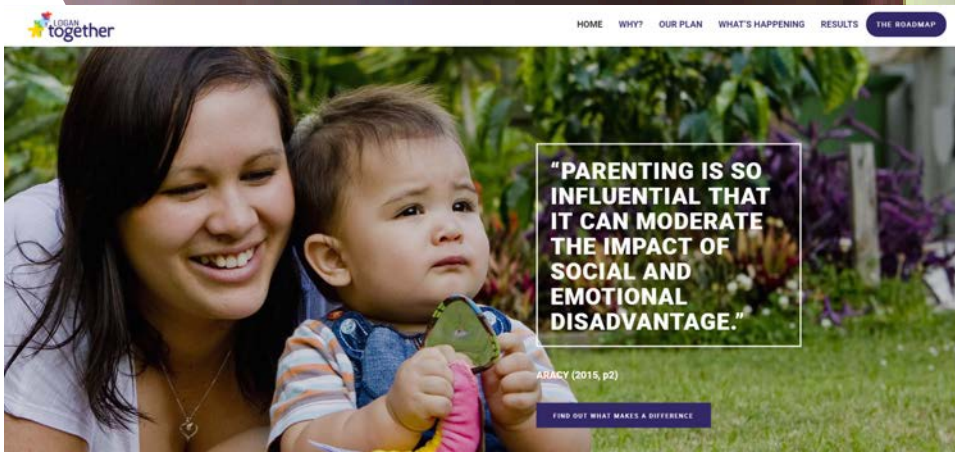
LOGAN CHILD FRIENDLY COMMUNITY CHARITABLE TRUST
 ABN 57 159 083 217
BALANCE SHEET
 AS AT 30 JUNE 2018

	2017 \$	2018 \$
Current Assets		
Cash at Bank	239,510	881,827
Total Current Assets	239,510	881,827
Total Assets	239,510	881,827
Liabilities		
Creditors	-	105,698
GST Payable	12,702	-
Total Liabilities	12,702	105,698
Net Assets	226,808	776,128
Equity		
Accumulated surplus	226,808	776,128
Total Equity	226,808	776,128

STAY IN THE LOOP

COMMUNICATION AND ENGAGEMENT WITH ALL OF LOGAN HAS ALWAYS BEEN A BIG PART OF LOGAN TOGETHER AND THIS YEAR WE REVAMPED OUR WEBSITE TO MAKE IT EVEN MORE JAMPACKED WITH INFORMATION, NEWS AND RESOURCES. IT'S ALSO THE PLACE TO GO TO SUBSCRIBE TO THE LOGAN TOGETHER MONTHLY NEWSLETTER.

www.logantogether.org.au









www.logantgether.org.au



Logan Together
Griffith University, Logan Campus
Building L.08 (entry via Business School)
University Drive
Meadowbrook Qld 4131

Phone: (07) 3382 1163
Email: info@logantogether.org.au
Web: logantogether.org.au
Facebook: facebook.com/LoganTogether
Twitter: @LoganTogether