



BANNOCKBURN SUBURB PROFILE

CONTENTS

INTRODUCTION 01

POPULATION..... 02

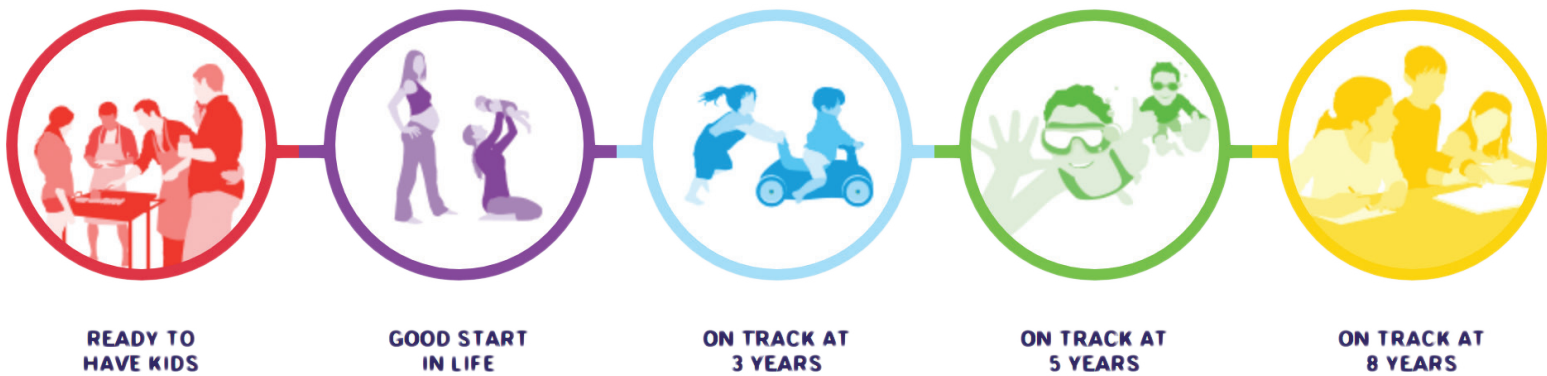
CULTURAL BACKGROUND..... 07

EDUCATION 07

EMPLOYMENT & HOUSEHOLD INFORMATION..... 08

TRANSPORT..... 11

THE LOGAN TOGETHER ROADMAP



FAMILY FOUNDATIONS



Priorities

- ▶ Jobs and employment
- ▶ Secure housing
- ▶ Family safety
- ▶ Social/emotional wellbeing for all the family
- ▶ Parents feel knowledgeable and confident

STRONG COMMUNITY



Priorities

- ▶ Social connection
- ▶ An empowered community

EFFECTIVE SYSTEMS



Priorities

- ▶ Social investment reform
- ▶ Child development workforce strategies
- ▶ Multi-agency service integration

INTRODUCTION

The following profile has been developed to support the analysis of population characteristics at a suburb level. In addition to population characteristics there is a particular focus on children aged 0-8 years, with the Australian Early Development Census (AEDC) and Naplan data being included where available.

This information, as well as other Logan Suburb Profiles, can be found on the Logan Together website, along with a detailed Roadmap. This is a live document which is frequently being updated, so please visit www.logantogether.org.au for the most up-to-date data.

Please note: as there is no educational institution in Bannockburn, this information is not available for this suburb.



60% OF THE POPULATION IN BANNOCKBURN IS AGED BETWEEN 0 AND 40 YEARS.

IN THE 2016 CENSUS **756** PEOPLE WERE LIVING IN BANNOCKBURN

THERE WERE **111** CHILDREN BETWEEN 0-8 YEARS OF AGE 2016

POPULATION

TABLE 1: POPULATION OF THE BANNOCKBURN COMMUNITY BY AGE IN 2016

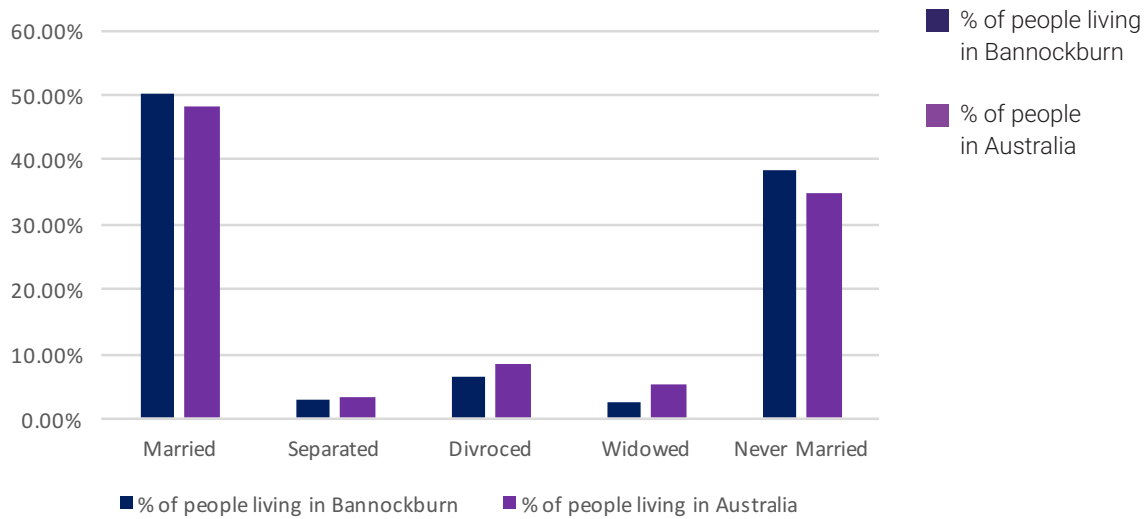
| AGE | NO. OF PEOPLE IN BANNOCKBURN | % OF PEOPLE IN BANNOCKBURN | AUSTRALIA % |
|-------------------|------------------------------|----------------------------|-------------|
| 0-4 years | 57 | 7.6 | 6.3 |
| 5-9 years | 60 | 8.0 | 6.4 |
| 10-14 years | 47 | 6.2 | 6.0 |
| 15-19 years | 62 | 8.2 | 6.1 |
| 20-24 years | 69 | 9.2 | 6.7 |
| 25-29 years | 58 | 7.7 | 7.1 |
| 30-34 years | 53 | 7.0 | 7.3 |
| 35-39 years | 49 | 6.5 | 6.7 |
| 40-44 years | 48 | 6.4 | 6.8 |
| 45-49 years | 50 | 6.6 | 6.8 |
| 50-54 years | 40 | 5.3 | 6.5 |
| 55-59 years | 49 | 6.5 | 6.2 |
| 60-64 years | 44 | 5.8 | 5.6 |
| 65-69 years | 31 | 4.1 | 5.1 |
| 70-74 years | 17 | 2.3 | 3.8 |
| 75-79 years | 13 | 1.7 | 2.8 |
| 80-84 years | 3 | 0.3 | 2.0 |
| 85 years and over | 8 | 1.0 | 2.1 |

Source: ABS census data 2016

TABLE 2: BREAKDOWN BY AGE OF CHILDREN 0-8 YEARS IN BANNOCKBURN 2016

| AGE | NO OF PEOPLE IN BANNOCKBURN | % BANNOCKBURN | % AUSTRALIA |
|-----|-----------------------------|---------------|-------------|
| 0 | 6 | 0.8 | 1.2 |
| 1 | 11 | 1.5 | 1.3 |
| 2 | 13 | 1.7 | 1.3 |
| 3 | 14 | 1.9 | 1.3 |
| 4 | 13 | 1.7 | 1.3 |
| 5 | 12 | 1.6 | 1.3 |
| 6 | 18 | 2.4 | 1.3 |
| 7 | 14 | 1.9 | 1.3 |
| 8 | 10 | 1.3 | 1.3 |

FIGURE I: REGISTERED MARITAL STATUS OF PEOPLE AGED 15 YEARS AND OVER IN KINGSTON



Source: ABS Census 2016 (people aged 15 and over)



TABLE 3: FAMILY COMPOSITION OF PEOPLE LIVING IN BANNOCKBURN

| | FAMILIES IN BANNOCKBURN | PERSONS IN BANNOCKBURN |
|---|-------------------------|------------------------|
| Couple family with no children | 67 | 134 |
| Couple family with: | | |
| Children under 15 and: | | |
| dependent students and non-dependent children | 3 | 20 |
| dependent students and no non-dependent children | 10 | 62 |
| no dependent students and with non-dependent children | 3 | 14 |
| no dependent students and no non-dependent children | 48 | 201 |
| Total: | 71 | 296 |
| No children under 15 and | | |
| with dependent students and non-dependent children | 3 | 27 |
| with dependent students and no non-dependent children | 8 | 26 |
| no dependent students and with non-dependent children | 17 | 60 |
| Total | 35 | 117 |
| One parent family with: | | |
| Children under 15 and: | | |
| dependent students and non-dependent children | 0 | 3 |
| dependent students and no non-dependent children | 3 | 7 |
| no dependent students and with non-dependent children | 0 | 0 |
| no dependent students and no non-dependent children | 11 | 37 |
| Total | 16 | 49 |
| No children under 15 and: | | |
| with dependent students and non-dependent children | 4 | 7 |
| with dependent students and no non-dependent children | 0 | 3 |
| no dependent students and with non-dependent children | 4 | 14 |
| Total | 5 | 24 |
| Other family | 3 | 10 |
| Total | 195 | 621 |

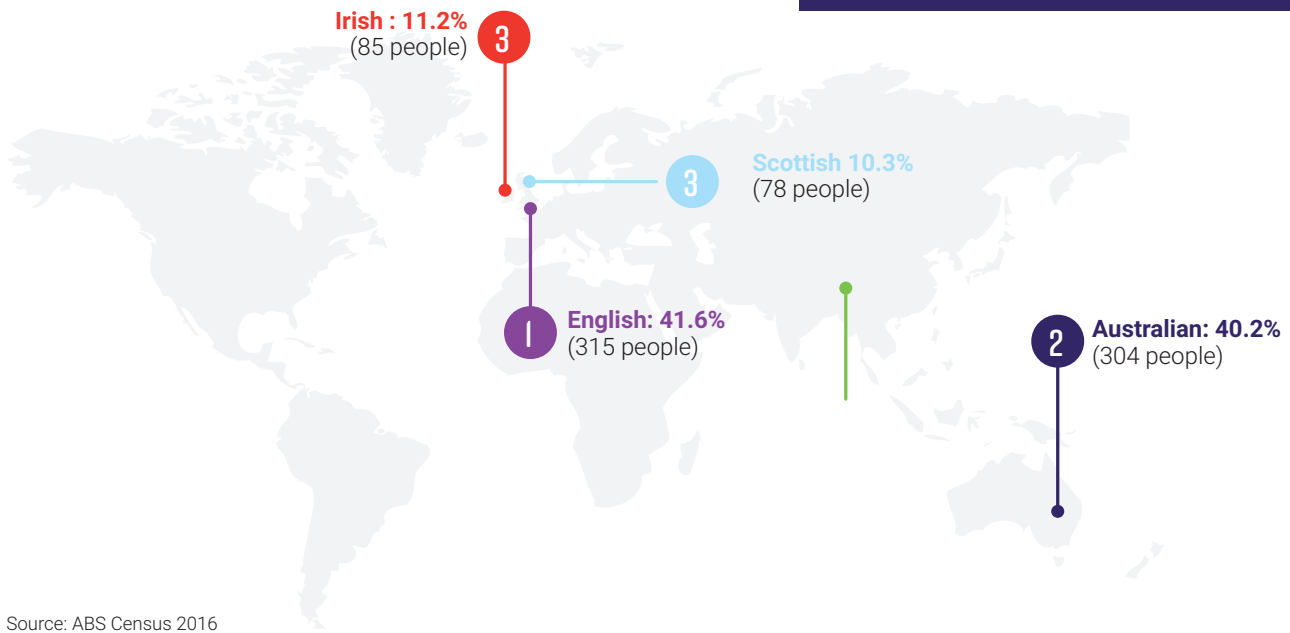
Source: ABS Census 2016

Please note small random adjustments are made to cell values to protect the confidentiality of data. This may cause the sum of rows or columns to differ by small amounts from table totals.

CULTURAL BACKGROUND

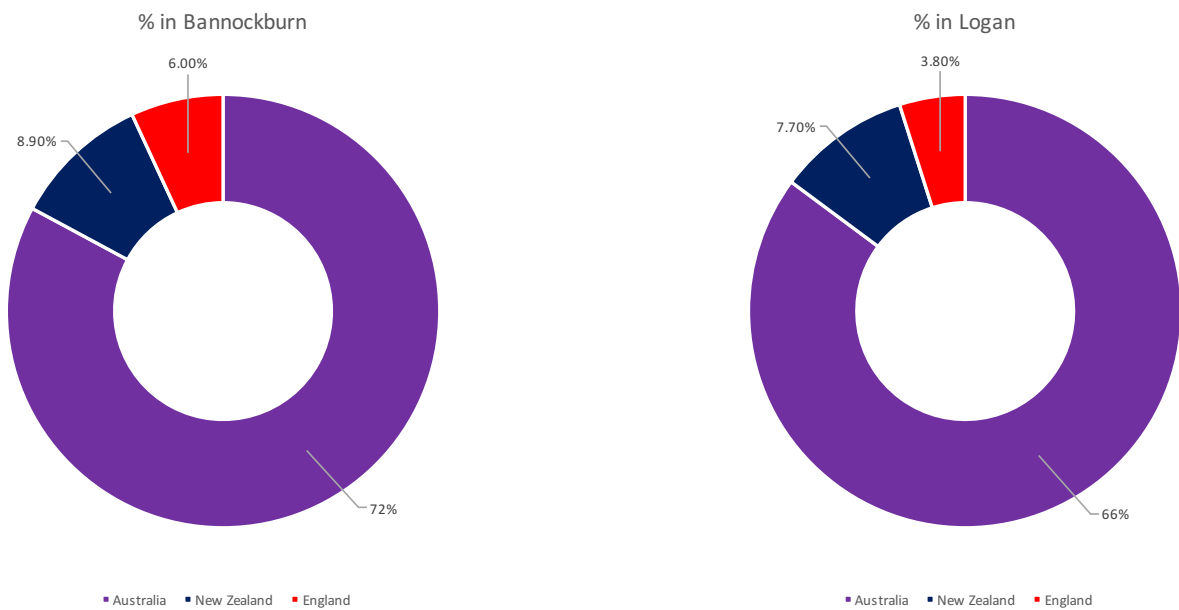
FIGURE 2: ANCESTRY OF PEOPLE LIVING IN BANNOCKBURN (TOP 5 COUNTRIES OF BIRTH OF PARENTS)

The most common ancestry of people living in Bannockburn was English, closely followed by Australian.



Source: ABS Census 2016

FIGURE 3: COUNTRY OF BIRTH OF PEOPLE LIVING IN BANNOCKBURN



Source: ABS Census 2016

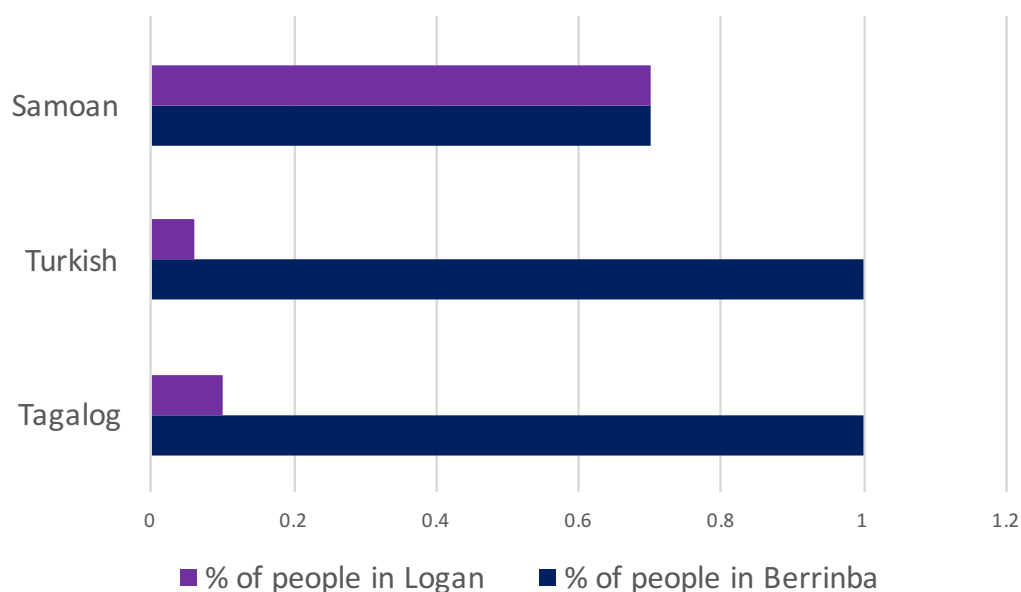
TABLE 4: ABORIGINAL AND/OR TORRES STRAIT ISLANDER PEOPLE

| AGE | MALES | FEMALES | TOTAL |
|-------------------|----------|----------|----------|
| 0-4 years | 0 | 0 | 3 |
| 5-9 years | 0 | 0 | 3 |
| 10-14 years | 0 | 0 | 0 |
| 15-19 years | 0 | 0 | 0 |
| 20-24 years | 0 | 0 | 0 |
| 25-29 years | 0 | 6 | 0 |
| 30-34 years | 0 | 3 | 0 |
| 35-39 years | 0 | 0 | 0 |
| 40-44 years | 0 | 0 | 0 |
| 45-49 years | 0 | 4 | 0 |
| 50-54 years | 0 | 0 | 0 |
| 55-59 years | 0 | 0 | 0 |
| 60-64 years | 0 | 0 | 0 |
| 65 years and over | 0 | 0 | 0 |
| Total | 3 | 3 | 6 |

Source: ABS Census 2016:

Please note small random adjustments are made to cell values to protect the confidentiality of data. This may cause the sum of rows or columns to differ by small amounts from table totals.

FIGURE 4: LANGUAGE OTHER THAN ENGLISH SPOKEN AT HOME (TOP THREE RESPONSES)



663 people (88%) in Bannockburn speak only English in the home, compared to 78% in Logan as a whole.

Source: ABS Census 2016:

Please note small random adjustments are made to cell values to protect the confidentiality of data. This may cause the sum of rows or columns to differ by small amounts from table totals.

EDUCATION

TABLE 5: NUMBER OF PEOPLE LIVING IN BANNOCKBURN ATTENDING AN EDUCATIONAL INSTITUTION

| EDUCATION TYPE | BANNOCKBURN # | BANNOCKBURN % | AUSTRALIA % |
|------------------------------------|---------------|---------------|-------------|
| | 12 | 1.6 | 4.8 |
| Primary School - Govt. | 53 | 7.0 | 18.2 |
| Primary School - Catholic | 6 | 0.7 | 5.3 |
| Primary School - other non Govt. | 8 | 1.0 | 3.2 |
| Secondary School -Govt. | 20 | 2.6 | 11.5 |
| Secondary School - Catholic | 10 | 1.3 | 4.7 |
| Secondary School - other non Govt. | 23 | 3.0 | 3.9 |
| Technical or Further Education | 14 | 1.8 | 5.9 |
| University or tertiary institution | 27 | 3.6 | 16.1 |
| Other | 5 | 0.6 | 2.8 |
| Not stated | 43 | 5.6 | 23.7 |

Source: ABS Census 2016

TABLE 6: LEVEL OF EDUCATION OF PEOPLE LIVING IN BANNOCKBURN

Number of people 15 years and over: 587

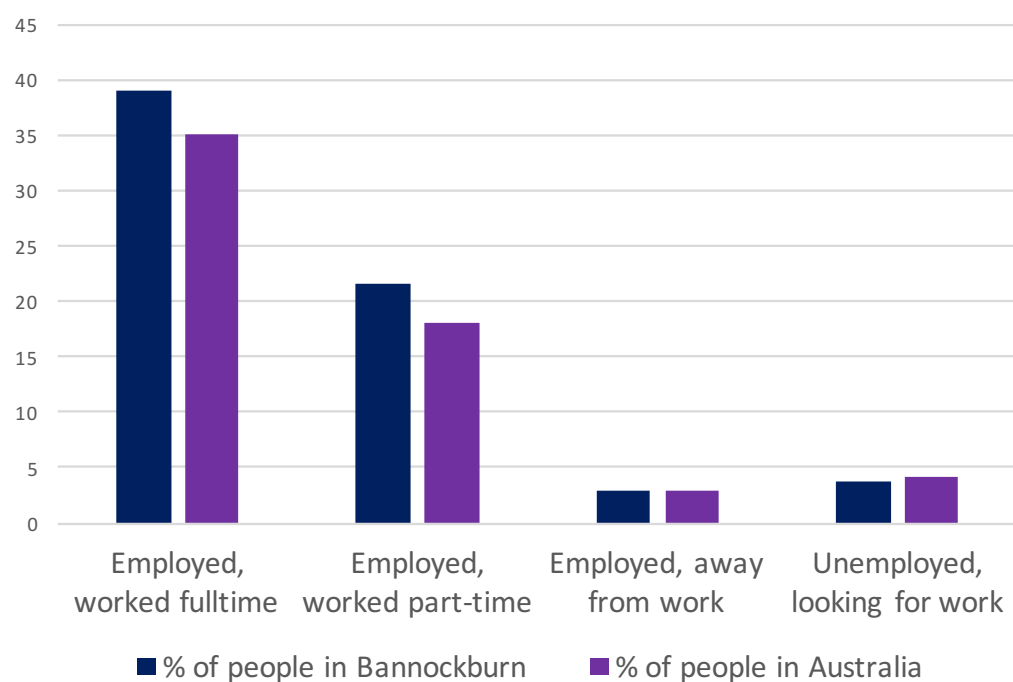
| | NO. OF PEOPLE IN BANNOCKBURN | % OF PEOPLE IN BANNOCKBURN | % OF PEOPLE IN AUSTRALIA |
|---|------------------------------|----------------------------|--------------------------|
| Postgraduate Degree | 0 | 0 | .07 |
| Doctoral Degree | 0 | 0 | 0.61 |
| Master Degree | 0 | 0 | 3.1 |
| Grad Dip and Grad Cert | 0 | 0 | 0.14 |
| Grad Dip | 0 | 0 | 1.11 |
| Grad Cert | 0 | 0 | 0.3 |
| Bachelor Degree | 12 | 2 | 11.6 |
| Adv Dip and Dip | 0 | 0 | .05 |
| Adv Dip/Associate Degree | 3 | 0.5 | 2.4 |
| Diploma | 15 | 2.5 | 3.7 |
| Cert III and IV | 78 | 13.1 | 11.2 |
| Cert I and II | 0 | 0 | 0.7 |
| Cert | 3 | 0.5 | 1.1 |
| Level of education inadequately described | 3 | 0.4 | 0.4 |
| Level of education not stated | 4 | 0.7 | 1.1 |
| Total | 127 | 21.4 | 38 |

Source: ABS Census 2016:

Please note small random adjustments are made to cell values to protect the confidentiality of data. This may cause the sum of rows or columns to differ by small amounts from table totals.

EMPLOYMENT AND HOUSEHOLD INFORMATION

FIGURE 5: SELECTED LABOUR FORCE STATISTICS (PEOPLE AGED 15 AND OVER)



Number of people aged 15 years and over in Bannockburn: 587
 Number of people in the labour force: 398
 Number of people not in labour force: 161

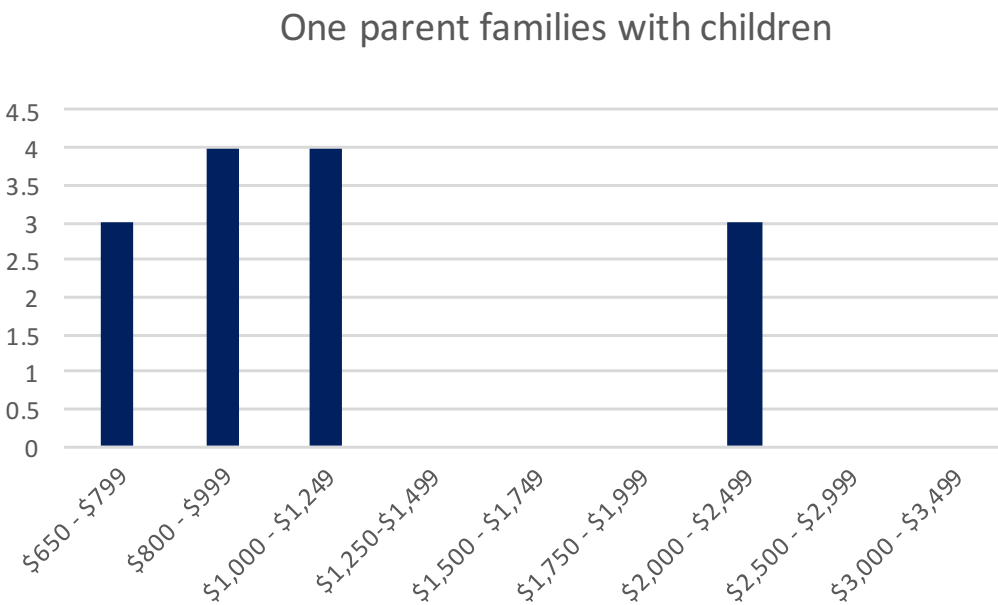
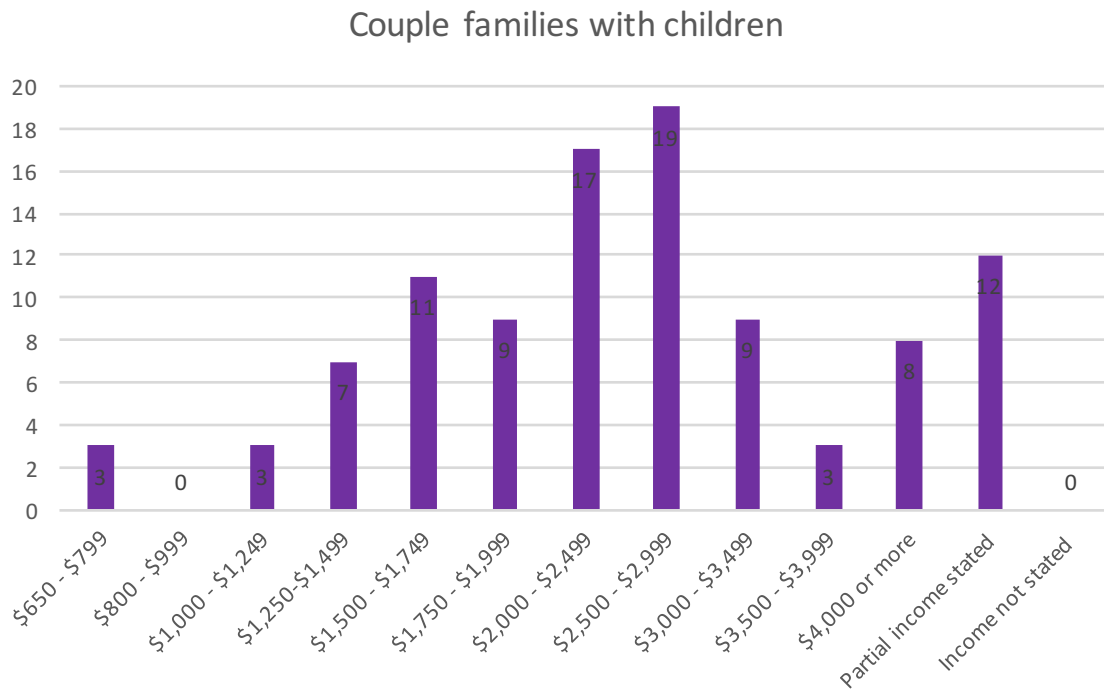
TABLE 7: NO OF PERSONS EMPLOYED BY OCCUPATION (PEOPLE AGED 15 YEARS AND OVER)

| | % OF PEOPLE IN BANNOCKBURN | % OF PEOPLE IN AUSTRALIA |
|--|----------------------------|--------------------------|
| Managers | 5.6 | 7.3 |
| Professionals | 8.6 | 12.4 |
| Technicians and trade workers | 12.7 | 7.6 |
| Community and personal service workers | 7.8 | 6.0 |
| Clerical and administrative workers | 9.1 | 7.6 |
| Sales workers | 6.8 | 5.2 |
| Machinery operators and drivers | 4.2 | 3.5 |
| Labourers | 6.5 | 5.3 |
| Inadequately described/not stated | 0.8 | 0.9 |

Source: ABS Census 2016

Please note small random adjustments are made to cell values to protect the confidentiality of data. This may cause the sum of rows or columns to differ by small amounts from table totals.

FIGURE 6: TOTAL WEEKLY INCOME OF FAMILIES IN BANNOCKBURN



Source: ABS Census 2016

Please note small random adjustments are made to cell values to protect the confidentiality of data. This may cause the sum of rows or columns to differ by small amounts from table totals.

TABLE 8: HOUSEHOLD INCOME AND HOUSING COSTS - SELECTED MEDIANS AND AVERAGE

| | BANNOCKBURN | LOGAN | AUSTRALIA |
|---|-------------|-------|-----------|
| Median age of persons | 32 | 34 | 38 |
| Median total personal income (\$/weekly) | 710 | 635 | 662 |
| Median total family income (\$/weekly) | 2,014 | 1,546 | 1,734 |
| Median total household income (\$/weekly) | 2,012 | 1,416 | 1,438 |
| Median mortgage repayment (\$/monthly) | 1,821 | 1,733 | 1,755 |
| Median rent (\$/weekly) | 400 | 335 | 335 |
| Average number of persons per bedroom | 0.8 | 0.8 | 0.9 |
| Average household size | 3.3 | 2.9 | 2.6 |

Source: ABS Census 2016

Please note small random adjustments are made to cell values to protect the confidentiality of data. This may cause the sum of rows or columns to differ by small amounts from table totals.

INTERNET CONNECTION

TABLE 9: DWELLING INTERNET CONNECTION

| | % OF DWELLINGS IN BANNOCKBURN | % OF DWELLINGS IN LOGAN | % OF DWELLINGS IN AUSTRALIA |
|-------------------------------------|-------------------------------|-------------------------|-----------------------------|
| Internet accessed from dwelling | 92 | 84.7 | 83.1 |
| Internet not accessed from dwelling | 6.5 | 12.6 | 14.1 |
| Not stated | 1.9 | 2.7 | 2.6 |

Source: ABS Census 2016

Please note small random adjustments are made to cell values to protect the confidentiality of data. This may cause the sum of rows or columns to differ by small amounts from table totals.

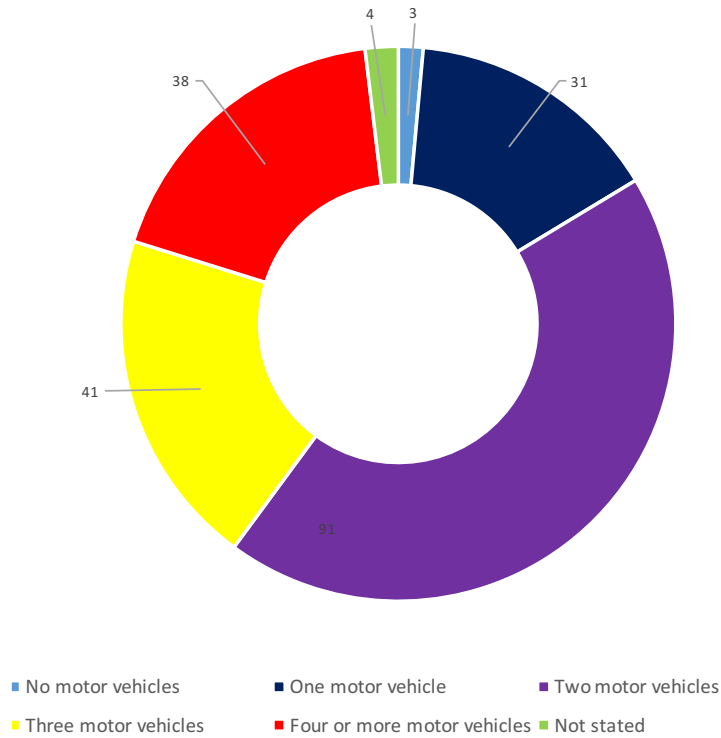
CRIME

LIVE CRIME DATA IS AVAILABLE AT

[HTTPS://DATA.POLICE.QLD.GOV.AU/CRIMESTATSMOBILE/#/MAP](https://data.police.qld.gov.au/crimestatmobile/#/map)

TRANSPORT

FIGURE 7: NUMBER OF MOTOR VEHICLES BY DWELLING



Source: ABS Census 2016:

Please note small random adjustments are made to cell values to protect the confidentiality of data. This may cause the sum of rows or columns to differ by small amounts from table totals.

TABLE 10: PRIMARY SINGLE METHOD OF TRANSPORT TO WORK

| | % IN BANNOCKBURN | % IN LOGAN | % IN AUSTRALIA |
|----------------------------|------------------|------------|----------------|
| Train | 1.6 | 1.3 | 5.6 |
| Bus | 1.3 | 3.3 | 3.7 |
| Ferry | 0 | 0 | 0.1 |
| Tram (includes light rail) | 0 | 0 | 0.7 |
| Taxi | 0 | 0.1 | 0.2 |
| Car, as driver | 88.1 | 83.1 | 74.8 |
| Car, as passenger | 7.2 | 6.8 | 5.7 |
| Truck | 1.9 | 1.9 | 1.0 |
| Motorbike/scooter | 0 | 1.1 | 0.7 |
| Bicycle | 0 | 0.3 | 1.2 |
| Other | 0 | 0.6 | 0.8 |
| Walked only | 0 | 1.3 | 4.3 |

Source: ABS Census 2016

Please note small random adjustments are made to cell values to protect the confidentiality of data. This may cause the sum of rows or columns to differ by small amounts from table totals.



 (07) 3382 1163

 info@logantogether.org.au

 facebook.com/LoganTogether

 [@LoganTogether](https://twitter.com/LoganTogether)

