



LOGANLEA SUBURB PROFILE

CONTENTS

INTRODUCTION 01

POPULATION..... 02

CULTURAL BACKGROUND.....06

EDUCATION 08

EMPLOYMENT & HOUSEHOLD INFORMATION..... 18

TRANSPORT..... 21

THE LOGAN TOGETHER ROADMAP



READY TO HAVE KIDS

GOOD START IN LIFE

ON TRACK AT 3 YEARS

ON TRACK AT 5 YEARS

ON TRACK AT 8 YEARS

FAMILY FOUNDATIONS



- Priorities**
- ▶ Jobs and employment
 - ▶ Secure housing
 - ▶ Family safety
 - ▶ Social/emotional wellbeing for all the family
 - ▶ Parents feel knowledgeable and confident

STRONG COMMUNITY



- Priorities**
- ▶ Social connection
 - ▶ An empowered community

EFFECTIVE SYSTEMS

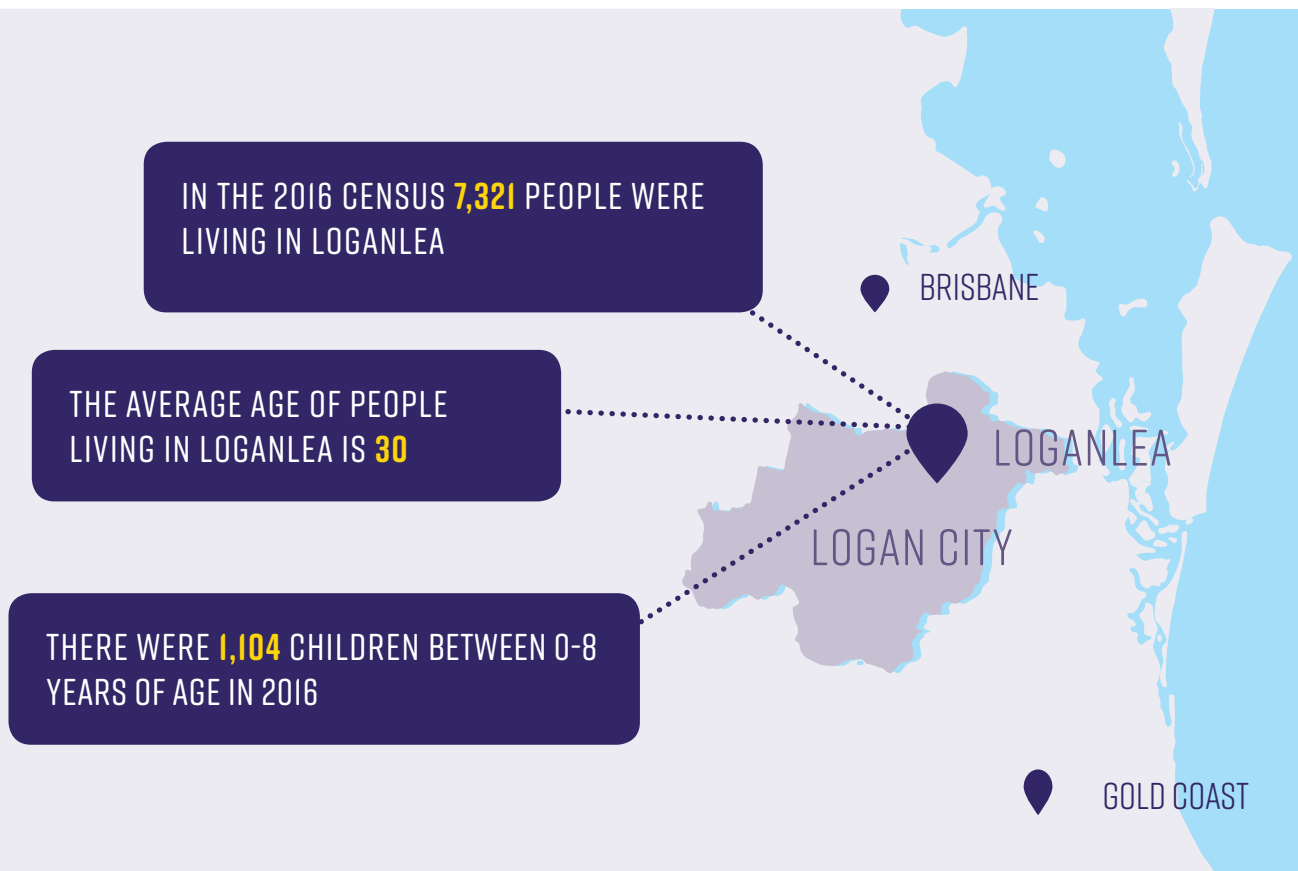


- Priorities**
- ▶ Social investment reform
 - ▶ Child development workforce strategies
 - ▶ Multi-agency service integration

INTRODUCTION

The following profile has been developed to support the analysis of population characteristics at a suburb level. In addition to population characteristics there is a particular focus on children aged 0-8 years, with the Australian Early Development Census (AEDC) and Naplan data being included where available.

This information, as well as other Logan Suburb Profiles, can be found on the Logan Together website, along with a detailed Roadmap. This is a live document which is frequently being updated, so please visit www.logantgether.org.au for the most up-to-date data.



POPULATION

TABLE 1: POPULATION OF THE LOGANLEA COMMUNITY BY AGE IN 2016

AGE	NO. OF PEOPLE IN LOGANLEA	% OF PEOPLE IN LOGANLEA	AUSTRALIA %
0-4 years	631	8.6	6.3
5-9 years	578	7.9	6.4
10-14 years	515	7.0	6.0
15-19 years	564	7.7	6.1
20-24 years	694	9.5	6.7
25-29 years	652	8.9	7.1
30-34 years	566	7.7	7.3
35-39 years	456	6.2	6.7
40-44 years	429	5.9	6.8
45-49 years	465	6.4	6.8
50-54 years	413	5.6	6.5
55-59 years	366	5.0	6.2
60-64 years	326	4.5	5.6
65-69 years	311	4.2	5.1
70-74 years	176	2.4	3.8
75-79 years	116	1.6	2.8
80-84 years	48	0.6	2.0
85 years and over	24	0.3	2.1

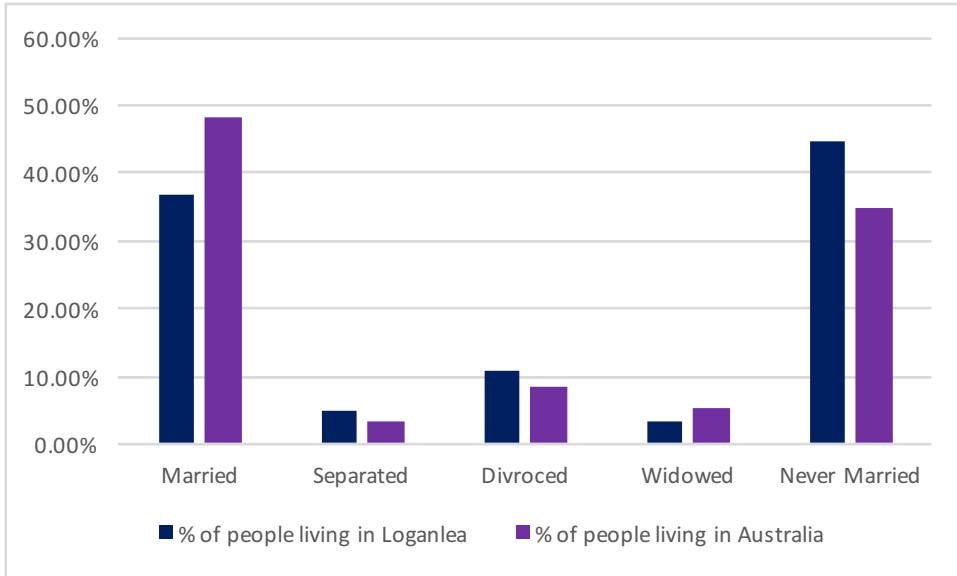
Source: ABS census data 2016

TABLE 2: BREAKDOWN BY AGE OF CHILDREN 0-8 YEARS IN LOGANLEA 2016

AGE	NO OF PEOPLE IN LOGANLEA	% LOGANLEA	% AUSTRALIA
0	138	1.9	1.2
1	122	1.7	1.3
2	116	1.6	1.3
3	122	1.7	1.3
4	137	1.9	1.3
5	107	1.5	1.3
6	123	1.7	1.3
7	101	1.4	1.3
8	137	1.9	1.3

Source: ABS census data 2016

FIGURE I: REGISTERED MARITAL STATUS OF PEOPLE AGED 15 YEARS AND OVER IN LOGANLEA



Source: ABS Census 2016 (people aged 15 and over)

Please note that there are small random adjustments made to all cell values to protect the confidentiality of data. These adjustments may cause the sum of rows or columns to differ by small amounts from table totals.



TABLE 3: FAMILY COMPOSITION IN LOGANLEA

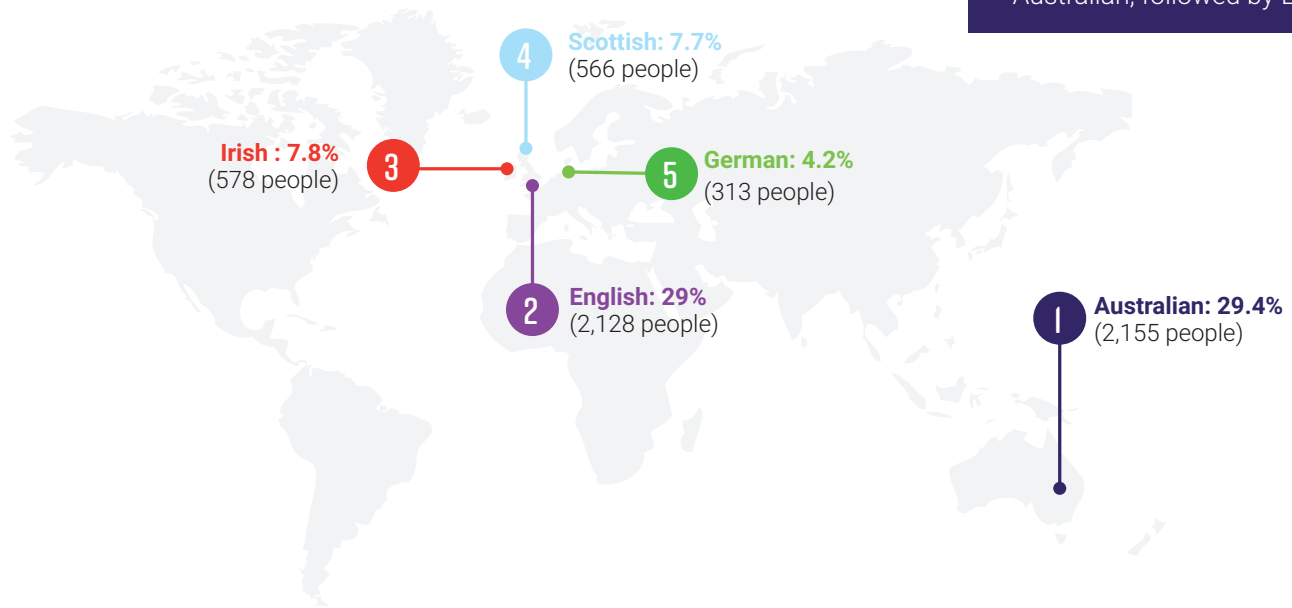
	FAMILIES IN LOGANLEA	PERSONS IN LOGANLEA
Couple family with no children	190	987
Couple family with:		
Children under 15 and:		
dependent students and non-dependent children	22	116
dependent students and no non-dependent children	72	382
no dependent students and with non-dependent children	34	173
no dependent students and no non-dependent children	414	1,666
Total:	531	2,337
No children under 15 and		
with dependent students and non-dependent children	25	107
with dependent students and no non-dependent children	27	95
no dependent students and with non-dependent children	135	445
Total	192	657
One parent family with:		
Children under 15 and:		
dependent students and non-dependent children	10	50
dependent students and no non-dependent children	41	173
no dependent students and with non-dependent children	34	130
no dependent students and no non-dependent children	225	619
Total	310	970
No children under 15 and:		
with dependent students and non-dependent children	24	76
with dependent students and no non-dependent children	34	84
no dependent students and with non-dependent children	164	368
Total	225	528
Other family	35	81
Total	536	1,503

Source: ABS Census 2016

Please note small random adjustments are made to cell values to protect the confidentiality of data. This may cause the sum of rows or columns to differ by small amounts from table totals.

CULTURAL BACKGROUND

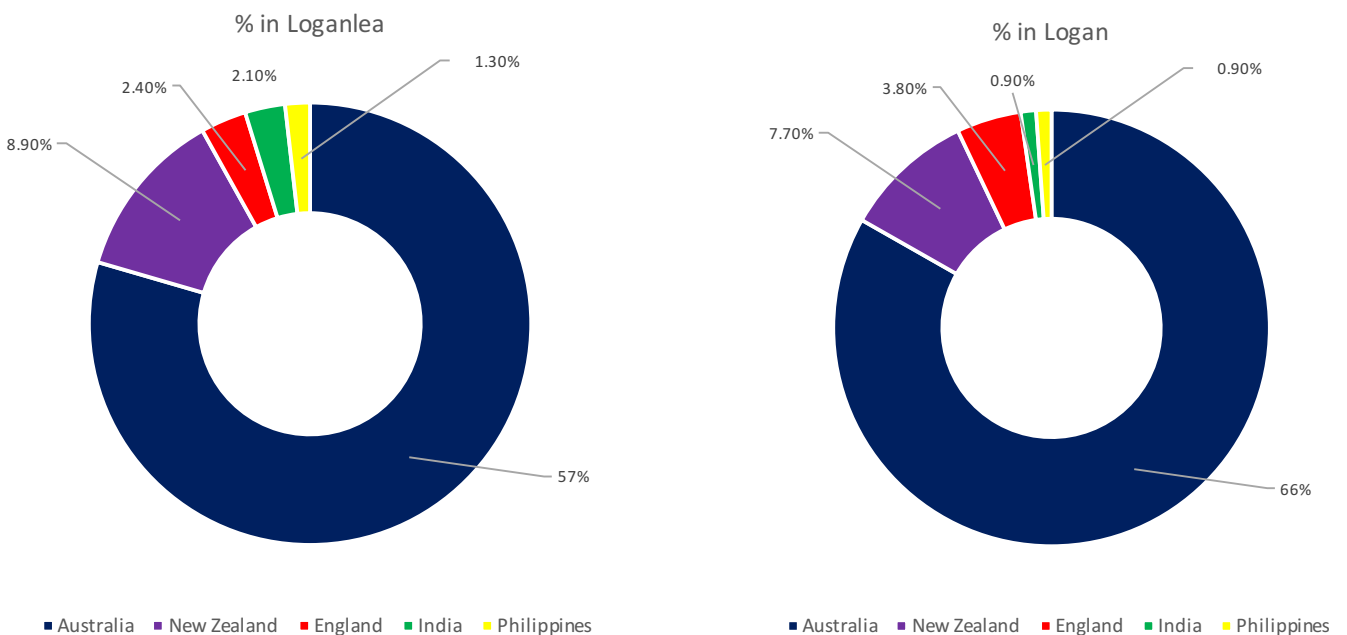
FIGURE 2: ANCESTRY OF PEOPLE LIVING IN LOGANLEA (TOP 5 COUNTRIES OF BIRTH OF PARENTS)



Source: ABS Census 2016 (people aged 15 and over)

Please note that there are small random adjustments made to all cell values to protect the confidentiality of data. These adjustments may cause the sum of rows or columns to differ by small amounts from table totals.

FIGURE 3: COUNTRY OF BIRTH OF PEOPLE LIVING IN LOGANLEA (TOP 5 RESPONSES)



Source: ABS Census 2016

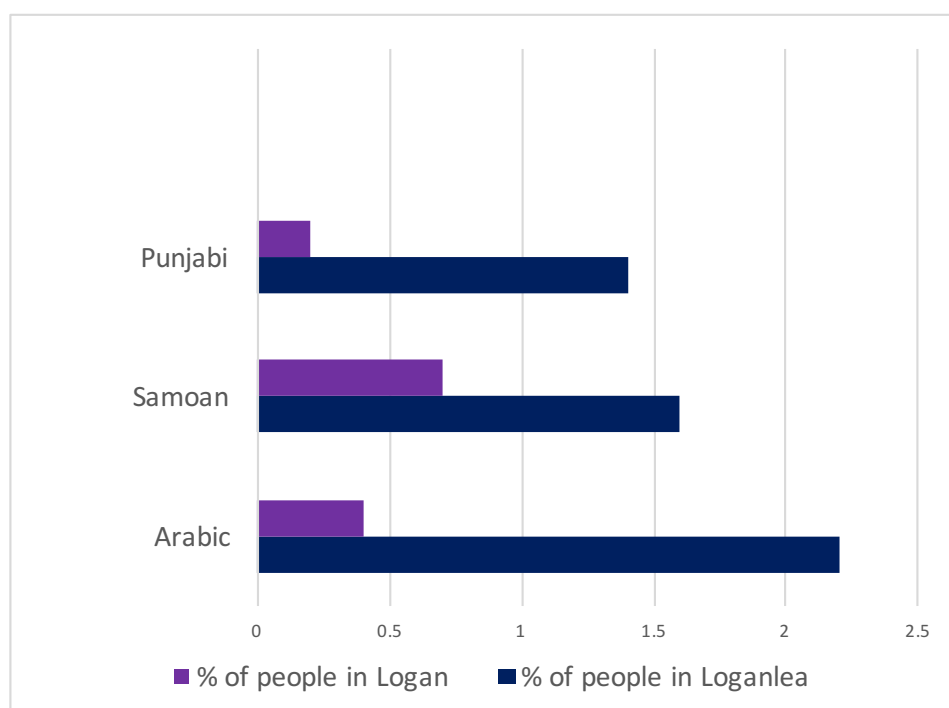
TABLE 4: ABORIGINAL AND/OR TORRES STRAIT ISLANDER PEOPLE

AGE	MALES	FEMALES	TOTAL
0-4 years	26	26	52
5-9 years	26	24	45
10-14 years	23	15	40
15-19 years	22	24	52
20-24 years	23	13	35
25-29 years	13	14	30
30-34 years	5	15	19
35-39 years	3	3	5
40-44 years	8	11	21
45-49 years	10	9	16
50-54 years	3	12	19
55-59 years	12	8	15
60-64 years	3	5	8
65 years and over	6	3	19
Total	182	191	374

Source: ABS Census 2016

Please note small random adjustments are made to cell values to protect the confidentiality of data. This may cause the sum of rows or columns to differ by small amounts from table totals.

FIGURE 4 : LANGUAGE OTHER THAN ENGLISH SPOKEN IN THE HOME (TOP 4 RESPONSES IN LOGANLEA)



5,010 people (68%) of people in Loganlea speak only English in the home, compared to 78% in Logan as a whole.

EDUCATION

TABLE 5: NUMBER OF PEOPLE LIVING IN LOGANLEA ATTENDING AN EDUCATIONAL INSTITUTION

EDUCATION TYPE	LOGANLEA #	LOGANLEA %	AUSTRALIA %
Preschool	104	1.4	4.8
Primary School - Govt.	532	7.2	18.2
Primary School - Catholic	49	0.6	5.3
Primary School - other non Govt.	86	1.1	3.2
Secondary School -Govt.	395	5.4	11.5
Secondary School - Catholic	39	0.5	4.7
Secondary School - other non Govt.	70	0.9	3.9
Technical or Further Education	199	2.7	5.9
University or tertiary institution	219	2.9	16.1
Other	76	1.0	2.8
Not stated	819	11.1	23.7



EARLY EDUCATION AND CARE

There are many different types of early education and care services. Most are regulated under the National Quality Framework (NQF) including; family day care, long day care, kindergarten/preschool and outside school hours care.

Regulated services are required to meet high national standards to ensure children are safe and are given opportunities for learning and development on a regular basis. These services are given quality ratings to help families choose the best service for their child and family.

The National Quality Framework introduced a new quality standard in 2012 to improve education and care across long day care, family day care, preschool/kindergarten, and outside school hours care services.

ECEC centres and NQS rating

Services are assessed against the 7 quality areas of the National Quality Standard (NQS) and given an overall rating based on these results.

The National Quality Framework includes the National Law and National Regulations, the National Quality Standard, an assessment and quality rating process and national learning frameworks.

The overall service ratings are:

- Excellent rating, awarded by ACECQA
- Exceeding National Quality Standard
- Meeting National Quality Standard
- Working towards National Quality Standard
- Significant Improvement Required

Services must display their ratings at the service at all times.

The 7 quality areas of the National Quality Standard are:

1. Educational program and practice
2. Children's health and safety
3. Physical environment
4. Staffing arrangements
5. Relationships with children
6. Partnerships with families and communities
7. Leadership and service management

The following is a list of the Early Education and Care services currently available in Loganlea and their National Quality Standard (NQS) Ratings as at the time of writing.

CENTRE NAME	OVERALL NATIONAL QUALITY STANDARDS RATING
Pelican Point Early Learning Centre	Working towards
Liberty Family Day Care	Meeting
Cubby Care Early Learning Centre	Working towards
TLC Childcare Meadowbrook	Meeting

SCHOOLS IN LOGANLEA

There is currently one school in Loganlea:

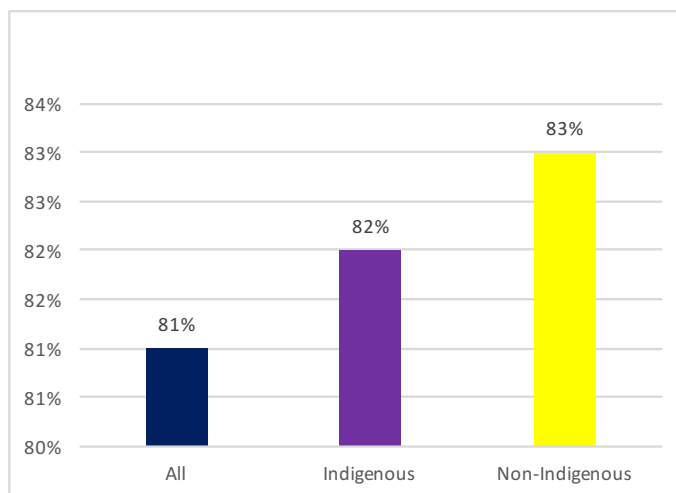
SCHOOL NAME	SECTOR	TYPE	STATUS AS AT SEPTEMBER 2017
Loganlea State High School	Secondary	Government	Year 7 - 12

TABLE 6: LOGANLEA STATE HIGH SCHOOL ENROLMENTS

Loganlea State High School is a coeducational facility for students in Years 7 to 12 with an enrolment of approximately 600 students. Loganlea's high expectations are reflected in the motto "to the stars..." and reinforced by high standards in academic performance, uniform and behaviour.

YEAR	TEACHING STAFF	TOTAL	FEMALE	MALE	INDIGENOUS	LANGUAGE BACKGROUND OTHER THAN ENGLISH
2016	36	444	226	218	12%	19%

FIGURE 5: LOGANLEA SHS STUDENT ATTENDANCE - TERM 3 2016



AUSTRALIAN EARLY DEVELOPMENT CENSUS (AEDC)

The AEDC is a nationwide measure that looks at how well children across Australia are growing up or 'developing'.

The AEDC looks at five different elements or domains that are important for children's development. These are: physical health and wellbeing, social competence, emotional maturity, language and cognitive skills (school-based); and communication skills and general knowledge.

The AEDC is collected every three years in schools across Australia. The data collection was completed in 2009, 2012 and 2015.

TABLE 10: LOGANLEA AEDC (2015 DATA) NUMBER AND % OF CHILDREN DEVELOPMENTALLY VULNERABLE ON ONE OR MORE DOMAINS

# CHILDREN	PHYSICAL HEALTH & WELLBEING	SOCIAL COMPETENCE	EMOTIONAL MATURITY	LANGUAGE & COGNITIVE SKILLS	COMMUNICATION SKILLS & GENERAL KNOWLEDGE	VULNERABLE ON 1 OR > DOMAINS	VULNERABLE ON 2 OR > DOMAINS
	16.1	18.6	10.2	16.1	16.1	39	22.9

Loganlea ranked 5th highest in the percentage of children developmentally vulnerable in language and cognitive skills. The suburb also ranked 8th highest in communications skills and general knowledge and emotional maturity. Loganlea has 39% of children (ranked 5th highest) developmentally vulnerable on one or more domains and 22.9% (ranked 6th highest) of children are developmentally vulnerable on two or more domains.

NAPLAN PERFORMANCE

The National Assessment Program – Literacy and Numeracy (NAPLAN) assesses all students in Australian schools in Years 3, 5, 7 and 9. In the tables below, “NMS” refers to National Minimum Standard.

TABLE II: NAPLAN RESULTS PERCENTAGE FOR LOGANLEA SHS YEAR 7 AGAINST STATISTICALLY SIMILAR SCHOOLS AND ALL AUSTRALIAN SCHOOLS

YEAR 7 2016	READING	WRITING	SPELLING	GRAMMAR PUNCTUATION	NUMERACY
Loganlea SHS	<NMS: 23 NMS: 29 >NMS: 49	<NMS: 39 NMS: 32 >NMS: 30	<NMS: 23 NMS: 28 >NMS: 49	<NMS: 24 NMS: 41 >NMS: 35	<NMS: 15 NMS: 30 >NMS: 55
Statistically Similar Schools	<NMS: 11 NMS: 27 >NMS: 60	<NMS: 17 NMS: 27 >NMS: 54	<NMS: 12 NMS: 20 >NMS: 66	<NMS: 11 NMS: 30 >NMS: 57	<NMS: 7 NMS: 26 >NMS: 65
All Australian Schools	<NMS: 4 NMS: 14 >NMS: 81	<NMS: 9 NMS: 18 >NMS: 72	<NMS: 5 NMS: 12 >NMS: 80	<NMS: 6 NMS: 14 >NMS: 78	<NMS: 3 NMS: 12 >NMS: 84

TABLE I2: NAPLAN RESULTS PERCENTAGE FOR LOGANLEA SHS YEAR 9 AGAINST ALL AUSTRALIAN SCHOOLS

YEAR 9 2016	READING	WRITING	SPELLING	GRAMMAR PUNCTUATION	NUMERACY
Loganlea SHS	<NMS: 18 NMS: 29 >NMS: 55	<NMS: 45 NMS: 36 >NMS: 19	<NMS: 24 NMS: 22 >NMS: 53	<NMS: 14 NMS: 45 >NMS: 41	<NMS: 7 NMS: 50 >NMS: 43
Statistically Similar Schools	<NMS: 12 NMS: 28 >NMS: 57	<NMS: 29 NMS: 28 >NMS: 40	<NMS: 18 NMS: 19 >NMS: 61	<NMS: 19 NMS: 26 >NMS: 54	<NMS: 5 NMS: 29 >NMS: 64
All Australian Schools	<NMS: 5 NMS: 16 >NMS: 82	<NMS: 15 NMS: 23 >NMS: 60	<NMS: 8 NMS: 15 >NMS: 76	<NMS: 6 NMS: 20 >NMS: 71	<NMS: 3 NMS: 15 >NMS: 80

TABLE 19: LEVEL OF EDUCATION OF PEOPLE LIVING IN LOGANLEA

Number of people 15 years and over: 5,600

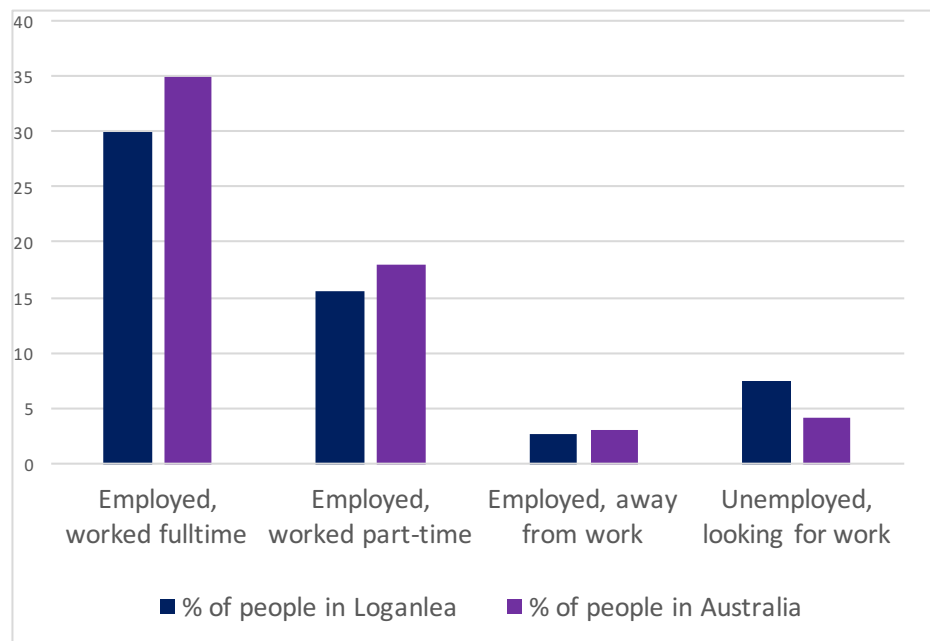
	NO. OF PEOPLE IN LOGANLEA	% OF PEOPLE IN LOGANLEA	% OF PEOPLE IN AUSTRALIA
Postgraduate Degree	3	0.05	.07
Doctoral Degree	7	0.1	0.61
Master Degree	52	0.9	3.1
Grad Dip and Grad Cert	0	0	0.14
Grad Dip	33	0.5	1.11
Grad Cert	7	0.1	0.3
Bachelor Degree	297	5.3	11.6
Adv Dip and Dip	4	0.07	.05
Adv Dip/Associate Degree	61	1.0	2.4
Diploma	201	3.5	3.7
Cert III and IV	678	12.1	11.2
Cert I and II	54	0.9	0.7
Cert	65	1.1	1.1
Level of education inadequately described	22	0.3	0.4
Level of education not stated	87	1.5	1.1

Source: ABS census data 2016



EMPLOYMENT AND HOUSEHOLD INFORMATION

FIGURE 9: SELECTED LABOUR FORCE STATISTICS (PEOPLE AGED 15 AND OVER)



Number of people aged 15 years and over in Loganlea: 5,600
 Number of people in the labour force: 3,138
 Number of people not in labour force: 1,897

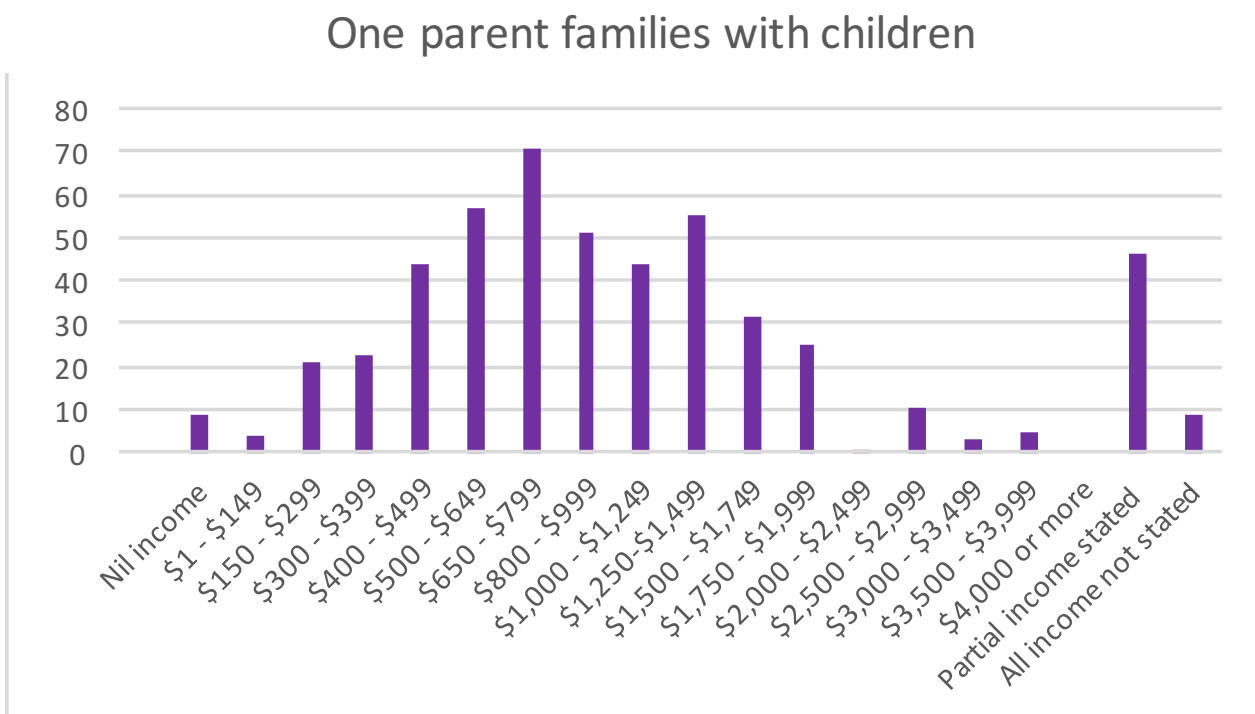
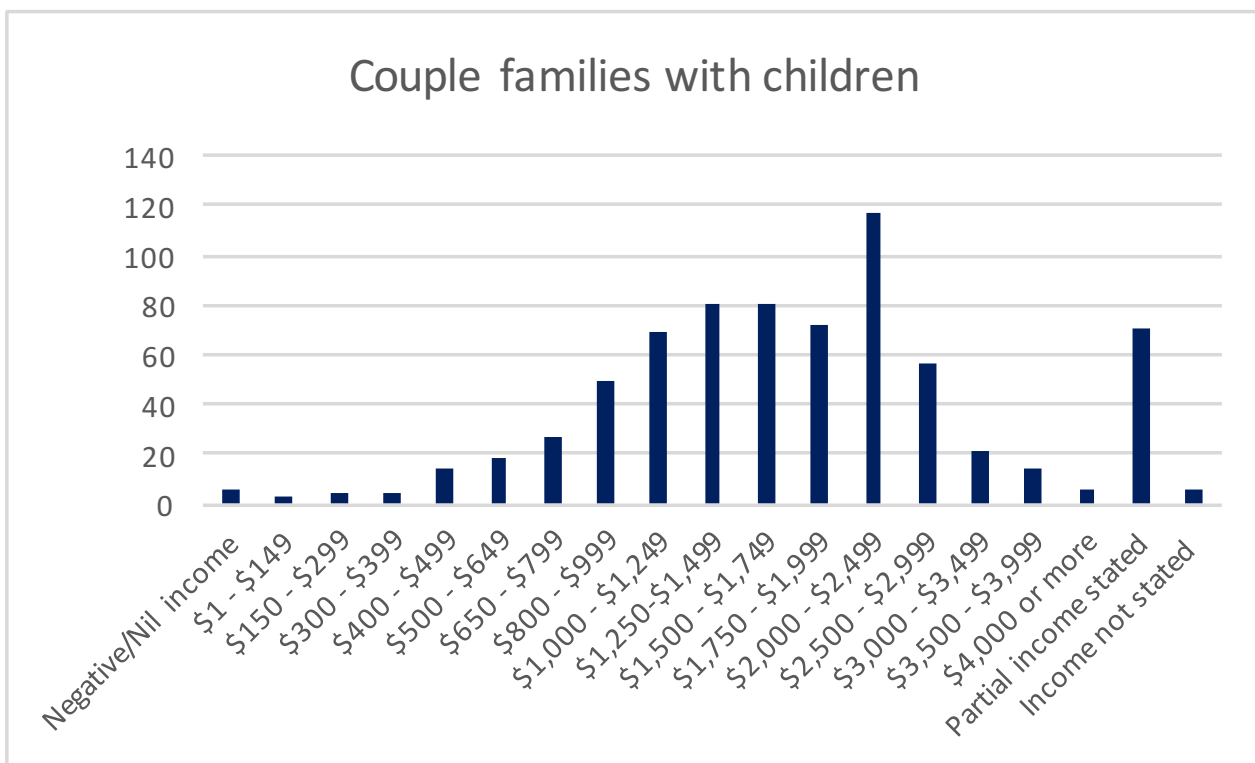
TABLE 20: NO OF PERSONS EMPLOYED BY OCCUPATION (PEOPLE AGED 15 YEARS AND OVER)

	% OF PEOPLE IN LOGANLEA	% OF PEOPLE IN AUSTRALIA
Managers	2.8	7.3
Professionals	5.1	12.4
Technicians and trade workers	7.6	7.6
Community and personal service workers	6.5	6.0
Clerical and administrative workers	6	7.6
Sales workers	4.7	5.2
Machinery operators and drivers	6.9	3.5
Labourers	7.9	5.3
Inadequately described/not stated	0.9	0.9

Source: ABS Census 2016:

Please note small random adjustments are made to cell values to protect the confidentiality of data. This may cause the sum of rows or columns to differ by small amounts from table totals.

FIGURE 10: TOTAL WEEKLY INCOME OF FAMILIES IN LOGANLEA



Source: ABS Census 2016:

Please note small random adjustments are made to cell values to protect the confidentiality of data. This may cause the sum of rows or columns to differ by small amounts from table totals.

TABLE 21: HOUSEHOLD INCOME AND HOUSING COSTS - SELECTED MEDIANS AND AVERAGE

	LOGANLEA	LOGAN	AUSTRALIA
Median age of persons	30	34	38
Median total personal income (\$/weekly)	550	635	662
Median total family income (\$/weekly)	1,302	1,546	1,734
Median total household income (\$/weekly)	1,243	1,416	1,438
Median mortgage repayment (\$/monthly)	1,517	1,733	1,755
Median rent (\$/weekly)	330	335	335
Average number of persons per bedroom	0.9	0.8	0.9
Average household size	2.9	2.9	2.6

Source: ABS Census 2016:

Please note small random adjustments are made to cell values to protect the confidentiality of data. This may cause the sum of rows or columns to differ by small amounts from table totals.

INTERNET CONNECTION

TABLE 22: DWELLING INTERNET CONNECTION

	% OF DWELLINGS IN LOGANLEA	% OF DWELLINGS IN LOGAN	% OF DWELLINGS IN AUSTRALIA
Internet accessed from dwelling	82	84.7	83.1
Internet not accessed from dwelling	14	12.6	14.1
Not stated	3.2	2.7	2.6

Source: ABS Census 2016:

Please note small random adjustments are made to cell values to protect the confidentiality of data. This may cause the sum of rows or columns to differ by small amounts from table totals.

TRANSPORT

FIGURE 10: NUMBER OF MOTOR VEHICLES BY DWELLING

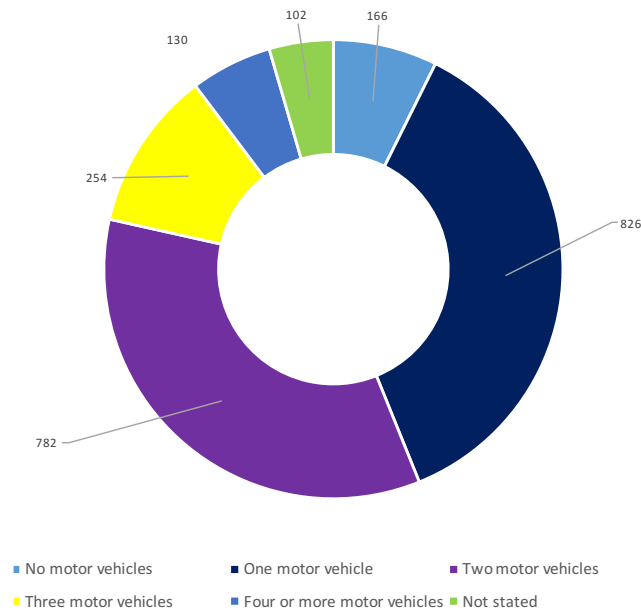


TABLE 23: PRIMARY SINGLE METHOD OF TRANSPORT TO WORK

	% IN LOGANLEA	% IN LOGAN	% IN AUSTRALIA
Train	4.1	1.3	5.6
Bus	2.5	3.3	3.7
Ferry	0	0	0.1
Tram (includes light rail)	0	0	0.7
Taxi	0.3	0.1	0.2
Car, as driver	80	83.1	75.8
Car, as passenger	8.3	6.8	5.7
Truck	1.6	1.9	1.0
Motorbike/scooter	1.0	1.1	0.7
Bicycle	0.6	0.3	1.2
Other	0.6	0.6	0.8
Walked only	1.3	1.3	4.3

Source: ABS Census 2016:

Please note small random adjustments are made to cell values to protect the confidentiality of data. This may cause the sum of rows or columns to differ by small amounts from table totals.

CRIME

FOR UP-TO-DATE CRIME INFORMATION ABOUT THIS AND OTHER LOGAN SUBURBS, GO TO [HTTPS://DATA.POLICE.QLD.GOV.AU/CRIMESTATSMOBILE/#/MAP](https://data.police.qld.gov.au/crimestatsmobile/#/map)



 (07) 3382 1163

 info@logantogether.org.au

 facebook.com/LoganTogether

 [@LoganTogether](https://twitter.com/LoganTogether)

