



TANAH MERAH SUBURB PROFILE

CONTENTS

INTRODUCTION	01
POPULATION.....	02
CULTURAL BACKGROUND.....	06
EDUCATION	08
EMPLOYMENT & HOUSEHOLD INFORMATION.....	18
TRANSPORT.....	21

THE LOGAN TOGETHER ROADMAP



**READY TO
HAVE KIDS**

**GOOD START
IN LIFE**

**ON TRACK AT
3 YEARS**

**ON TRACK AT
5 YEARS**

**ON TRACK AT
8 YEARS**

FAMILY FOUNDATIONS



- Priorities**
- ▶ Jobs and employment
 - ▶ Secure housing
 - ▶ Family safety
 - ▶ Social/emotional wellbeing for all the family
 - ▶ Parents feel knowledgeable and confident

STRONG COMMUNITY



- Priorities**
- ▶ Social connection
 - ▶ An empowered community

EFFECTIVE SYSTEMS

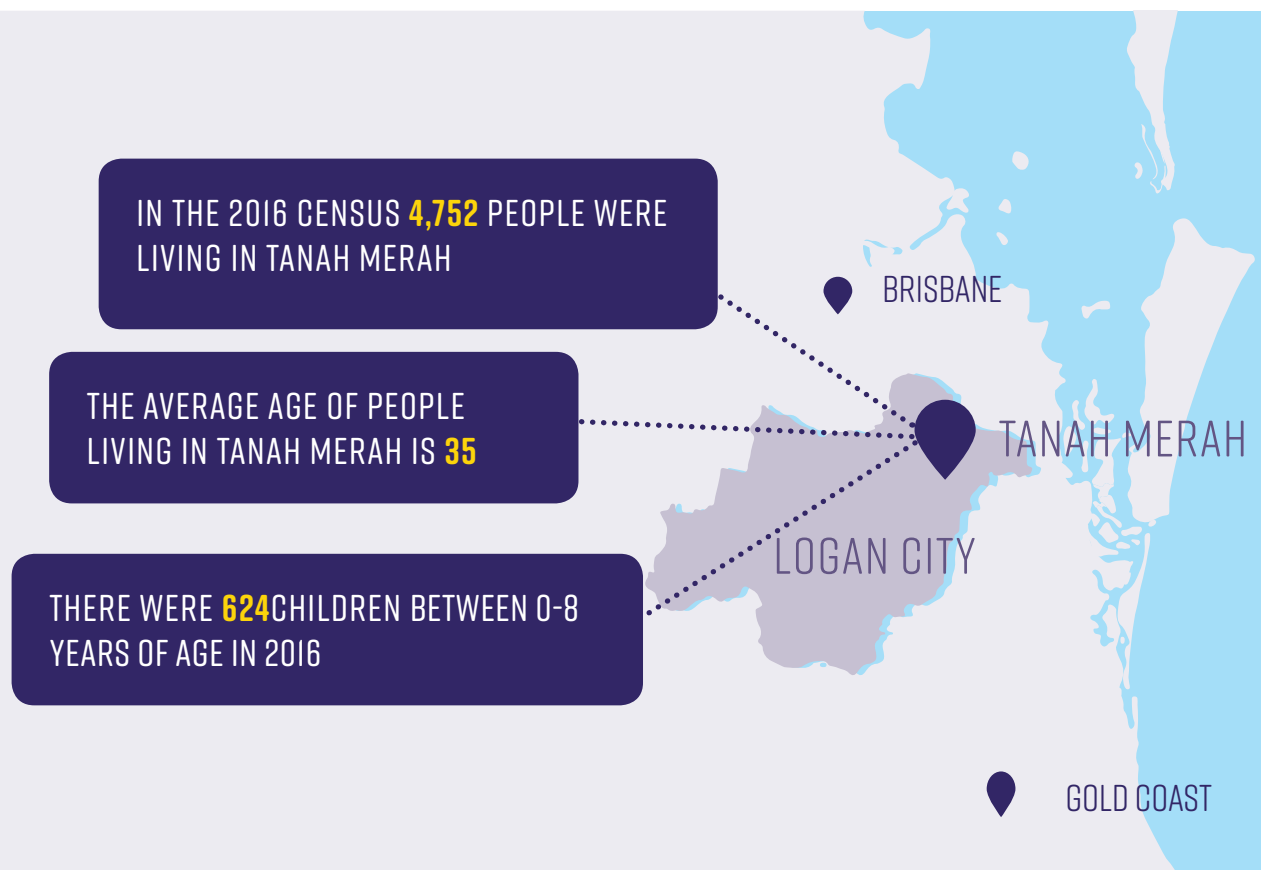


- Priorities**
- ▶ Social investment reform
 - ▶ Child development workforce strategies
 - ▶ Multi-agency service integration

INTRODUCTION

The following profile has been developed to support the analysis of population characteristics at a suburb level. In addition to population characteristics there is a particular focus on children aged 0-8 years, with the Australian Early Development Census (AEDC) and Naplan data being included where available.

This information, as well as other Logan Suburb Profiles, can be found on the Logan Together website, along with a detailed Roadmap. This is a live document which is frequently being updated, so please visit www.logantgether.org.au for the most up-to-date data.



POPULATION

TABLE 1: POPULATION OF THE TANAH MERAH COMMUNITY BY AGE IN 2016

AGE	NO. OF PEOPLE IN TANAH MERAH	% OF PEOPLE IN TANAH MERAH	AUSTRALIA %
0-4 years	355	7.5	6.3
5-9 years	338	7.1	6.4
10-14 years	300	6.3	6.0
15-19 years	291	6.1	6.1
20-24 years	303	6.4	6.7
25-29 years	398	8.4	7.1
30-34 years	336	7.1	7.3
35-39 years	347	7.3	6.7
40-44 years	347	7.3	6.8
45-49 years	314	6.6	6.8
50-54 years	323	6.8	6.5
55-59 years	290	6.1	6.2
60-64 years	260	5.5	5.6
65-69 years	226	4.8	5.1
70-74 years	170	3.6	3.8
75-79 years	101	2.1	2.8
80-84 years	30	0.6	2.0
85 years and over	25	0.5	2.1

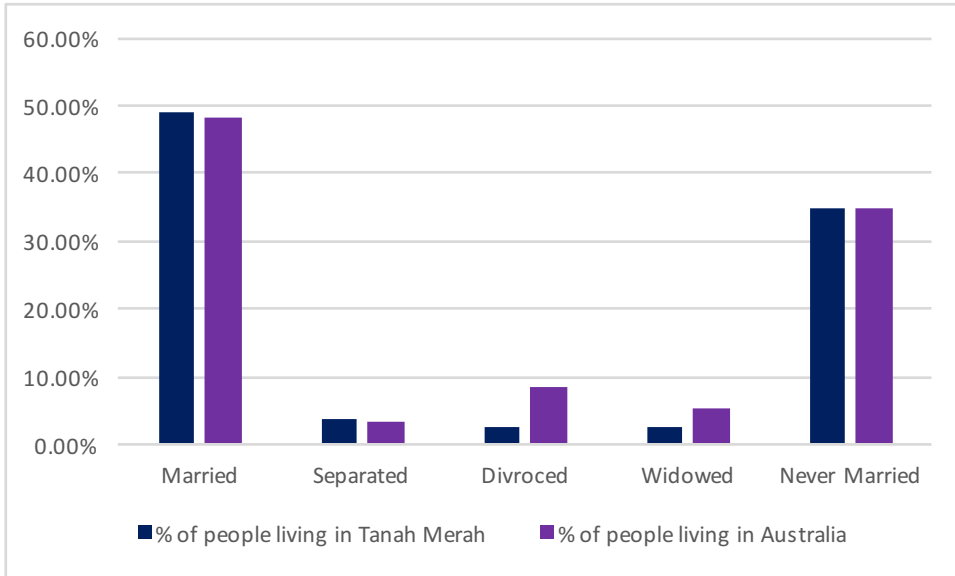
Source: ABS census data 2016

TABLE 2: BREAKDOWN BY AGE OF CHILDREN 0-8 YEARS IN TANAH MERAH 2016

AGE	NO OF PEOPLE IN TANAH MERAH	% TANAH MERAH	% AUSTRALIA
0	62	1.3	1.2
1	63	1.3	1.3
2	85	1.8	1.3
3	61	.3	1.3
4	83	1.7	1.3
5	59	1.2	1.3
6	73	1.5	1.3
7	63	1.3	1.3
8	75	1.6	1.3

Source: ABS census data 2016

FIGURE I: REGISTERED MARITAL STATUS OF PEOPLE AGED 15 YEARS AND OVER IN TANAH MERAH



Source: ABS Census 2016:

Please note small random adjustments are made to cell values to protect the confidentiality of data. This may cause the sum of rows or columns to differ by small amounts from table totals.



TABLE 3: FAMILY COMPOSITION IN TANAH MERAH

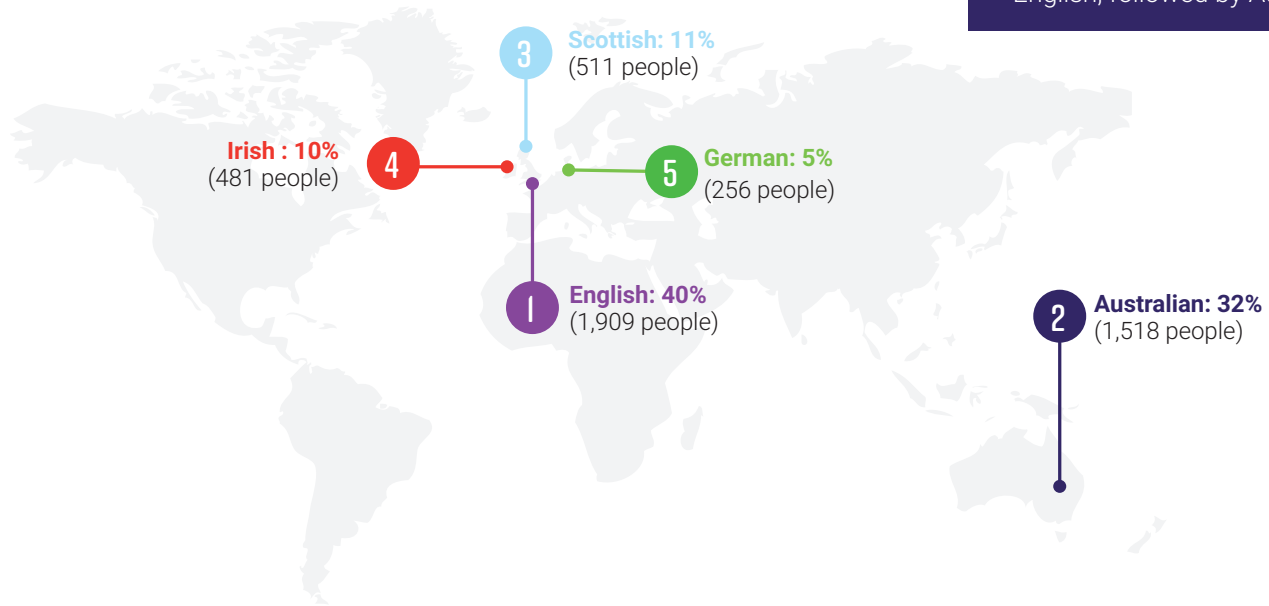
	FAMILIES IN TANAH MERAH	PERSONS IN TANAH MERAH
Couple family with no children	463	
Couple family with:		
Children under 15 and:		
dependent students and non-dependent children	15	74
dependent students and no non-dependent children	49	225
no dependent students and with non-dependent children	20	79
no dependent students and no non-dependent children	339	1,320
Total:	412	1,698
No children under 15 and		
with dependent students and non-dependent children	29	115
with dependent students and no non-dependent children	36	116
no dependent students and with non-dependent children	120	375
Total	184	604
One parent family with:		
Children under 15 and:		
dependent students and non-dependent children	3	14
dependent students and no non-dependent children	13	39
no dependent students and with non-dependent children	5	21
no dependent students and no non-dependent children	81	222
Total	102	296
No children under 15 and:		
with dependent students and non-dependent children	14	39
with dependent students and no non-dependent children	13	29
no dependent students and with non-dependent children	88	194
Total	115	264
Other family	217	50
Total	1,301	3,842

Source: ABS Census 2016

Please note small random adjustments are made to cell values to protect the confidentiality of data. This may cause the sum of rows or columns to differ by small amounts from table totals.

CULTURAL BACKGROUND

FIGURE 2: ANCESTRY OF PEOPLE LIVING IN TANAH MERAH (TOP 5 COUNTRIES OF BIRTH OF PARENTS)

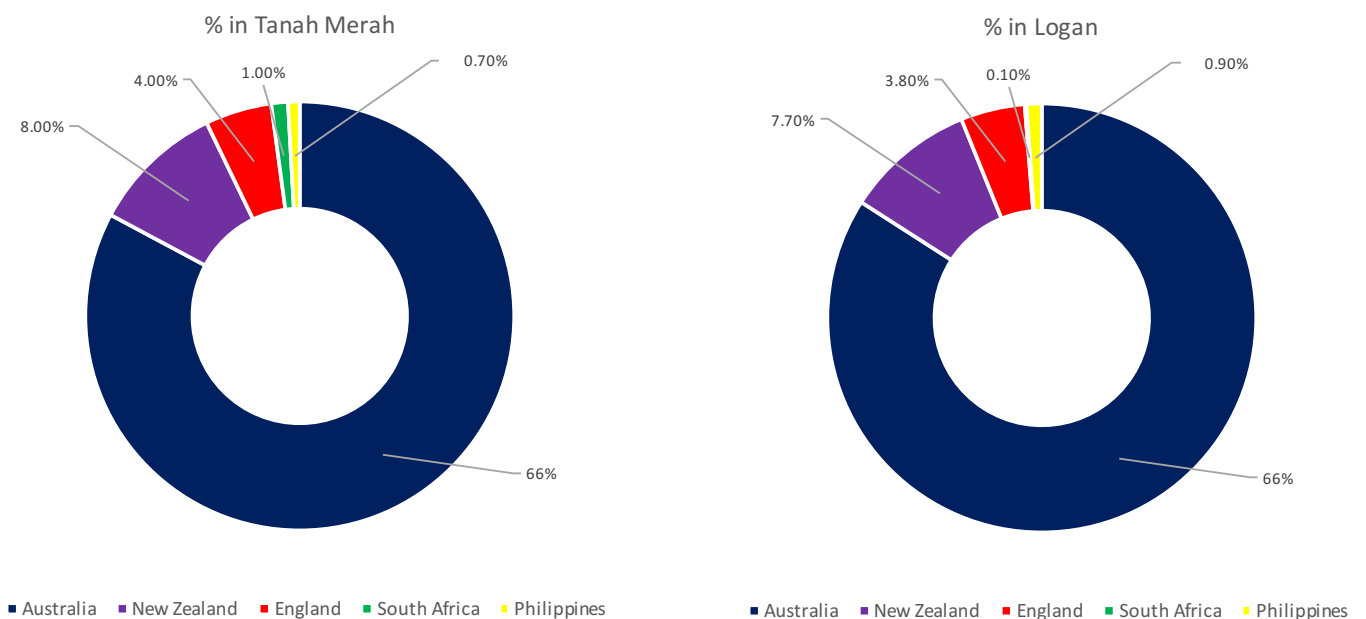


The most common ancestry of people living in Tanah Merah was English, followed by Australian.

Source: ABS Census 2016 (people aged 15 and over)

Please note that there are small random adjustments made to all cell values to protect the confidentiality of data. These adjustments may cause the sum of rows or columns to differ by small amounts from table totals.

FIGURE 3: COUNTRY OF BIRTH OF PEOPLE LIVING IN TANAH MERAH (TOP 5 RESPONSES)



Source: ABS Census 2016

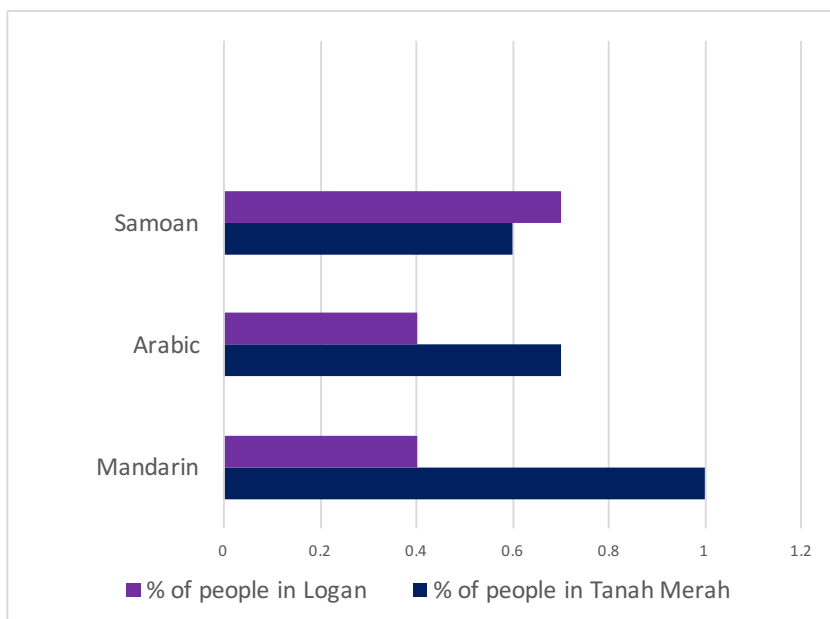
TABLE 4: ABORIGINAL AND/OR TORRES STRAIT ISLANDER PEOPLE

AGE	MALES	FEMALES	TOTAL
0-4 years	13	7	21
5-9 years	3	8	9
10-14 years	4	3	7
15-19 years	6	9	17
20-24 years	6	9	14
25-29 years	3	0	3
30-34 years	0	3	3
35-39 years	4	3	5
40-44 years	0	4	4
45-49 years	3	0	5
50-54 years	0	0	0
55-59 years	0	0	0
60-64 years	0	0	3
65 years and over	0	0	3
Total	37	53	94

Source: ABS Census 2016:

Please note small random adjustments are made to cell values to protect the confidentiality of data. This may cause the sum of rows or columns to differ by small amounts from table totals.

FIGURE 4 : LANGUAGE OTHER THAN ENGLISH SPOKEN IN THE HOME (TOP 4 RESPONSES IN TANAH MERAH)



3,850 people (81%) of people in Tanah Merah speak only English in the home, compared to 78% in Logan as a whole.

EDUCATION

TABLE 5: NUMBER OF PEOPLE LIVING IN LOGANLEA ATTENDING AN EDUCATIONAL INSTITUTION

EDUCATION TYPE	TANAH MERAH #	TANAH MERAH %	AUSTRALIA %
Preschool	70	1.5%	4.8
Primary School - Govt.	284	6%	18.2
Primary School - Catholic	77	1.6%	5.3
Primary School - other non Govt.	71	1.5%	3.2
Secondary School -Govt.	147	3%	11.5
Secondary School - Catholic	76	1.6%	4.7
Secondary School - other non Govt.	79	1.6%	3.9
Technical or Further Education	85	1.8%	5.9
University or tertiary institution	149	3.1%	16.1
Other	44	0.9%	2.8
Not stated	388	8.1%	23.7



EARLY EDUCATION AND CARE

There are many different types of early education and care services. Most are regulated under the National Quality Framework (NQF) including; family day care, long day care, kindergarten/preschool and outside school hours care.

Regulated services are required to meet high national standards to ensure children are safe and are given opportunities for learning and development on a regular basis. These services are given quality ratings to help families choose the best service for their child and family.

The National Quality Framework introduced a new quality standard in 2012 to improve education and care across long day care, family day care, preschool/kindergarten, and outside school hours care services.

ECEC centres and NQS rating

Services are assessed against the 7 quality areas of the National Quality Standard (NQS) and given an overall rating based on these results.

The National Quality Framework includes the National Law and National Regulations, the National Quality Standard, an assessment and quality rating process and national learning frameworks.

The overall service ratings are:

- Excellent rating, awarded by ACECQA
- Exceeding National Quality Standard
- Meeting National Quality Standard
- Working towards National Quality Standard
- Significant Improvement Required

Services must display their ratings at the service at all times.

The 7 quality areas of the National Quality Standard are:

1. Educational program and practice
2. Children's health and safety
3. Physical environment
4. Staffing arrangements
5. Relationships with children
6. Partnerships with families and communities
7. Leadership and service management

The following is a list of the Early Education and Care services currently available in Tanah Merah and their National Quality Standard (NQS) Ratings as at the time of writing.

CENTRE NAME	OVERALL NATIONAL QUALITY STANDARDS RATING
Pelican Point Early Learning Centre	Working towards
Liberty Family Day Care	Meeting
Cubby Care Early Learning Centre	Working towards
TLC Childcare Meadowbrook	Meeting

SCHOOLS IN TANAH MERAH

There are currently no schools in Tanah Merah

TABLE 19: LEVEL OF EDUCATION OF PEOPLE LIVING IN TANAH MERAH

Number of people 15 years and over: 3,762

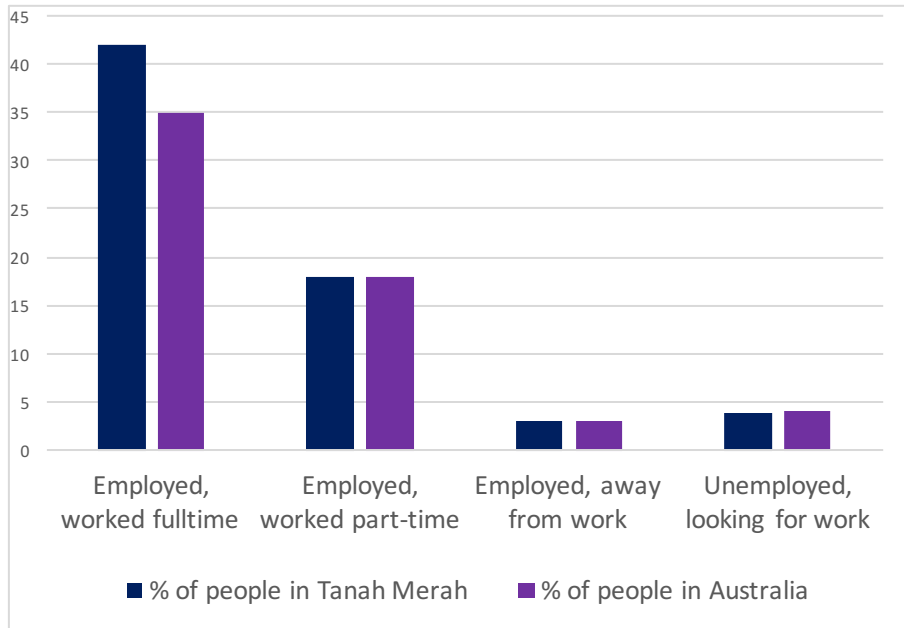
	NO. OF PEOPLE IN TANAH MERAH	% OF PEOPLE IN TANAH MERAH	% OF PEOPLE IN AUSTRALIA
Postgraduate Degree	5	0.1	.07
Doctoral Degree	11	0.2	0.61
Master Degree	42	0.8	3.1
Grad Dip and Grad Cert	3	0.06	0.14
Grad Dip	37	0.7	1.11
Grad Cert	19	0.4	0.3
Bachelor Degree	316	6.6	11.6
Adv Dip and Dip	5	0.1	.05
Adv Dip/Associate Degree	82	1.7	2.4
Diploma	188	3.9	3.7
Cert III and IV	632	13.2	11.2
Cert I and II	26	0.5	0.7
Cert	70	1.5	1.1
Level of education inadequately described	21	0.4	0.4
Level of education not stated	38	0.8	1.1

Source: ABS census data 2016



EMPLOYMENT AND HOUSEHOLD INFORMATION

FIGURE 9: SELECTED LABOUR FORCE STATISTICS (PEOPLE AGED 15 AND OVER)



Number of people aged 15 years and over in Tanah Merah: 3,762
 Number of people in the labour force: 2,494
 Number of people not in labour force: 942

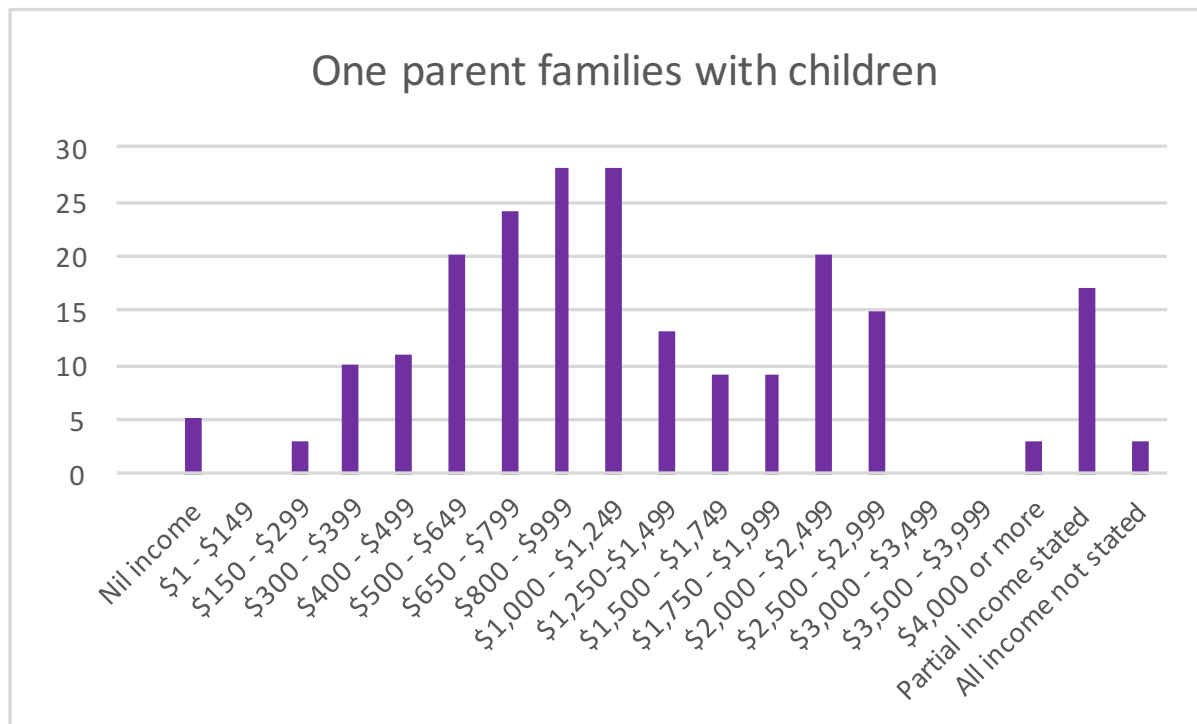
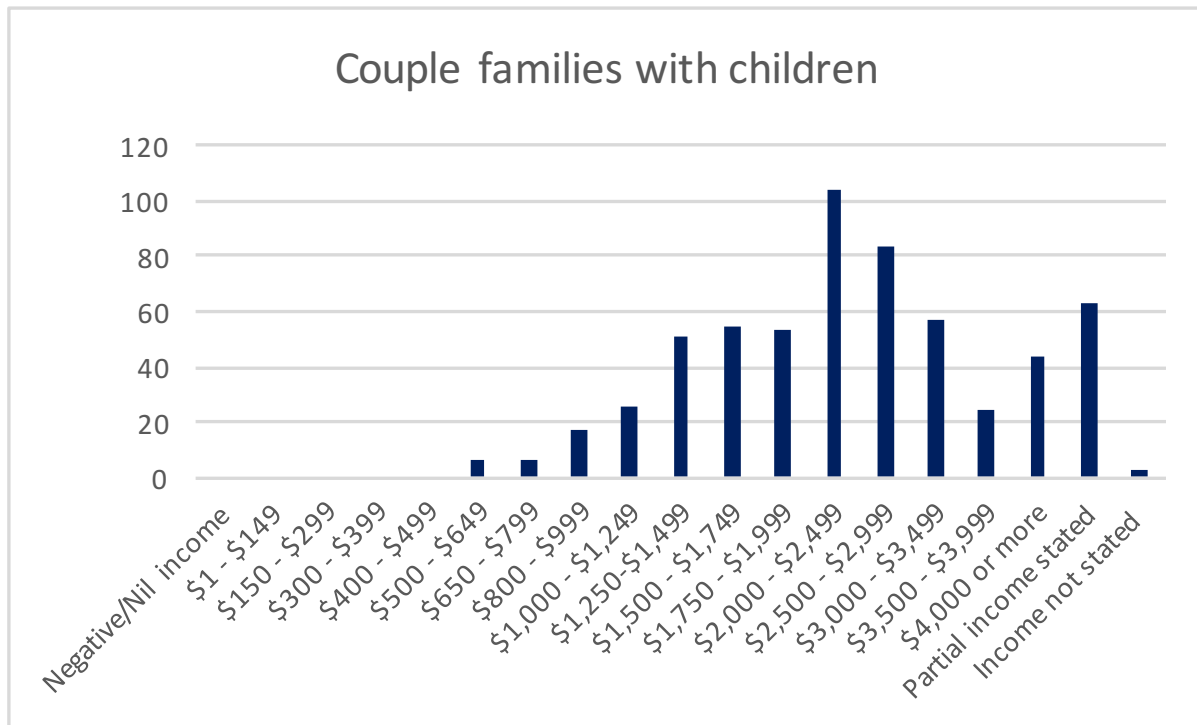
TABLE 20: NO OF PERSONS EMPLOYED BY OCCUPATION (PEOPLE AGED 15 YEARS AND OVER)

	% OF PEOPLE IN TANAH MERAH	% OF PEOPLE IN AUSTRALIA
Managers	5.8	7.3
Professionals	10.2	12.4
Technicians and trade workers	10.7	7.6
Community and personal service workers	6	6.0
Clerical and administrative workers	10.3	7.6
Sales workers	6.7	5.2
Machinery operators and drivers	5.4	3.5
Labourers	6	5.3
Inadequately described/not stated	1.1	0.9

Source: ABS Census 2016:

Please note small random adjustments are made to cell values to protect the confidentiality of data. This may cause the sum of rows or columns to differ by small amounts from table totals.

FIGURE 10: TOTAL WEEKLY INCOME OF FAMILIES IN TANAH MERAH



Source: ABS Census 2016:

Please note small random adjustments are made to cell values to protect the confidentiality of data. This may cause the sum of rows or columns to differ by small amounts from table totals.

TABLE 21: HOUSEHOLD INCOME AND HOUSING COSTS - SELECTED MEDIANS AND AVERAGE

	TANAH MERAH	LOGAN	AUSTRALIA
Median age of persons	35	34	38
Median total personal income (\$/weekly)	749	635	662
Median total family income (\$/weekly)	1,844	1,546	1,734
Median total household income (\$/weekly)	1,660	1,416	1,438
Median mortgage repayment (\$/monthly)	1,777	1,733	1,755
Median rent (\$/weekly)	358	335	335
Average number of persons per bedroom	0.8	0.8	0.9
Average household size	2.8	2.9	2.6

Source: ABS Census 2016:

Please note small random adjustments are made to cell values to protect the confidentiality of data. This may cause the sum of rows or columns to differ by small amounts from table totals.

INTERNET CONNECTION

TABLE 22: DWELLING INTERNET CONNECTION

	% OF DWELLINGS IN TANAH MERAH	% OF DWELLINGS IN LOGAN	% OF DWELLINGS IN AUSTRALIA
Internet accessed from dwelling	89	84.7	83.1
Internet not accessed from dwelling	8.3	12.6	14.1
Not stated	2.3	2.7	2.6

Source: ABS Census 2016:

Please note small random adjustments are made to cell values to protect the confidentiality of data. This may cause the sum of rows or columns to differ by small amounts from table totals.

TRANSPORT

FIGURE 10: NUMBER OF MOTOR VEHICLES BY DWELLING

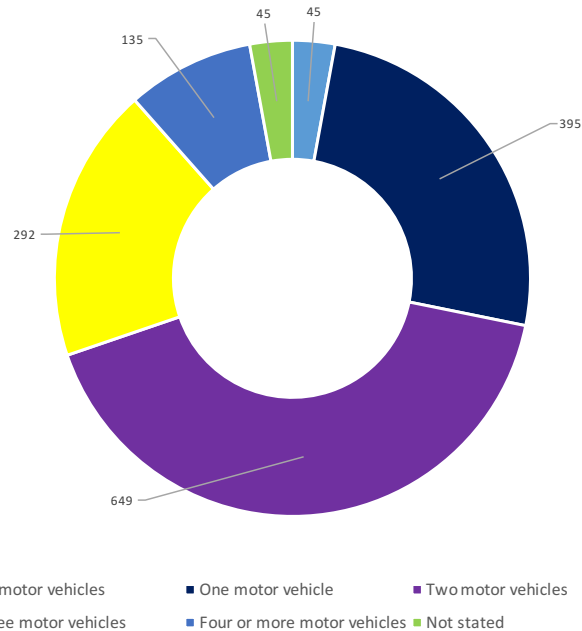


TABLE 23: PRIMARY SINGLE METHOD OF TRANSPORT TO WORK

	% IN TANAH MERAH	% IN LOGAN	% IN AUSTRALIA
Train	0.5	1.3	5.6
Bus	5.2	3.3	3.7
Ferry	0	0	0.1
Tram (includes light rail)	0	0	0.7
Taxi	0	0.1	0.2
Car, as driver	84	83.1	75.8
Car, as passenger	6	6.8	5.7
Truck	1.2	1.9	1.0
Motorbike/scooter	1.3	1.1	0.7
Bicycle	0.1	0.3	1.2
Other	0.6	0.6	0.8
Walked only	0.7	1.3	4.3

Source: ABS Census 2016:

Please note small random adjustments are made to cell values to protect the confidentiality of data. This may cause the sum of rows or columns to differ by small amounts from table totals.

CRIME

FOR UP-TO-DATE CRIME INFORMATION ABOUT THIS AND OTHER LOGAN SUBURBS, GO TO [HTTPS://DATA.POLICE.QLD.GOV.AU/CRIMESTATSMOBILE/#/MAP](https://data.police.qld.gov.au/crimestatsmobile/#/map)



 (07) 3382 1163

 info@logantogether.org.au

 facebook.com/LoganTogether

 [@LoganTogether](https://twitter.com/LoganTogether)

