



WINDAROO SUBURB PROFILE

CONTENTS

INTRODUCTION 01

POPULATION..... 02

CULTURAL BACKGROUND.....05

EDUCATION 07

EMPLOYMENT & HOUSEHOLD INFORMATION.....14

TRANSPORT.....17

THE LOGAN TOGETHER ROADMAP



**READY TO
HAVE KIDS**

**GOOD START
IN LIFE**

**ON TRACK AT
3 YEARS**

**ON TRACK AT
5 YEARS**

**ON TRACK AT
8 YEARS**

FAMILY FOUNDATIONS



- Priorities**
- ▶ Jobs and employment
 - ▶ Secure housing
 - ▶ Family safety
 - ▶ Social/emotional wellbeing for all the family
 - ▶ Parents feel knowledgeable and confident

STRONG COMMUNITY



- Priorities**
- ▶ Social connection
 - ▶ An empowered community

EFFECTIVE SYSTEMS



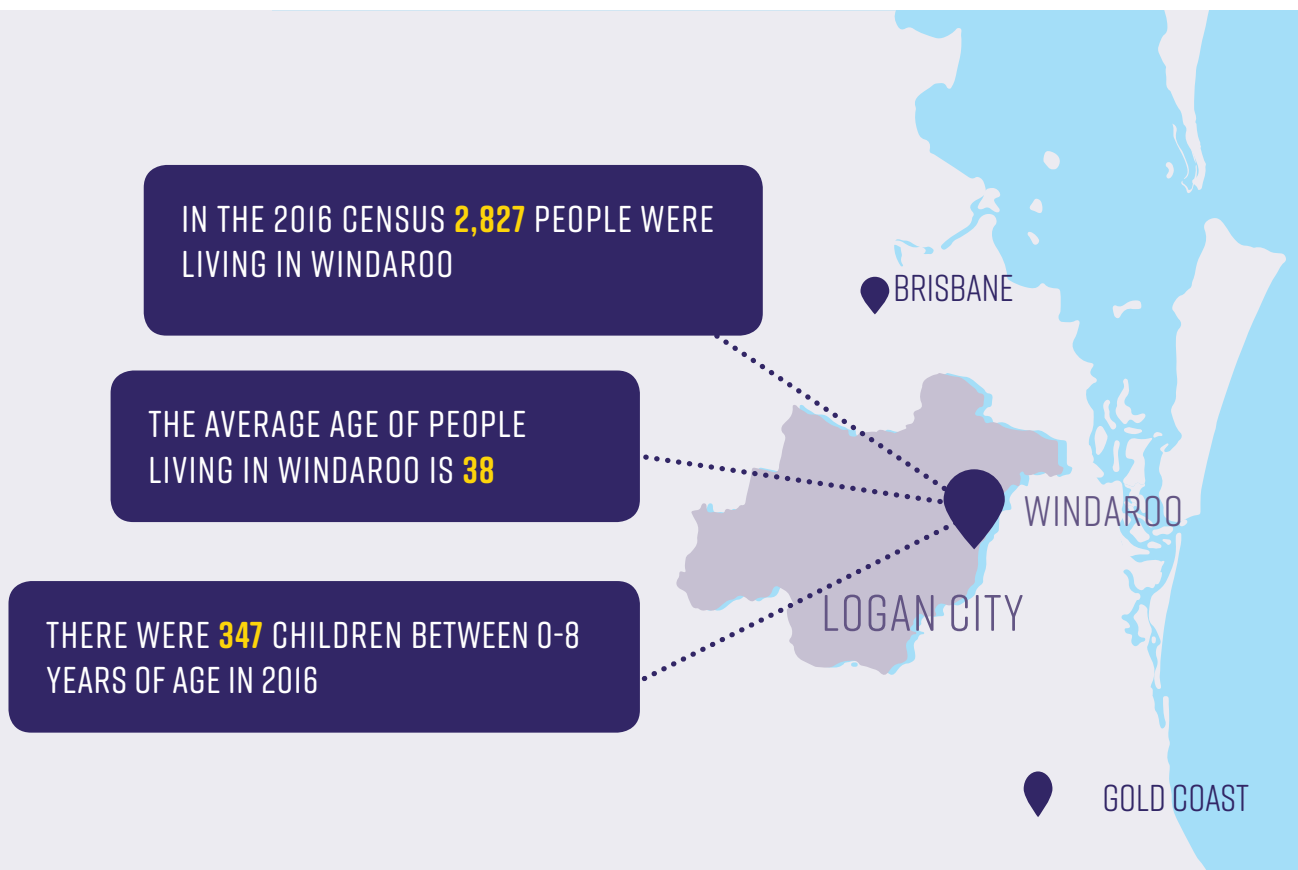
- Priorities**
- ▶ Social investment reform
 - ▶ Child development workforce strategies
 - ▶ Multi-agency service integration

INTRODUCTION

The following profile has been developed to support the analysis of population characteristics at a suburb level. In addition to population characteristics there is a particular focus on children aged 0-8 years, with the Australian Early Development Census (AEDC) and Naplan data being included where available.

This information, as well as other Logan Suburb Profiles, can be found on the Logan Together website, along with a detailed Roadmap. This is a live document which is frequently being updated, so please visit www.logantgether.org.au for the most up-to-date data.

Please note: as there is no educational institution in Windaroo, this information is not available for this suburb.



POPULATION

TABLE 1: POPULATION OF THE WINDAROO COMMUNITY BY AGE IN 2016

AGE	NO. OF PEOPLE IN WINDAROO	% OF PEOPLE IN WINDAROO	AUSTRALIA %
0-4 years	171	6	6.3
5-9 years	211	7.5	6.4
10-14 years	211	7.5	6.0
15-19 years	225	8	6.1
20-24 years	162	5.7	6.7
25-29 years	130	4.6	7.1
30-34 years	178	6.3	7.3
35-39 years	199	7	6.7
40-44 years	208	7.4	6.8
45-49 years	202	7.1	6.8
50-54 years	207	7.3	6.5
55-59 years	204	7.2	6.2
60-64 years	146	5.2	5.6
65-69 years	141	5	5.1
70-74 years	81	2.9	3.8
75-79 years	70	2.5	2.8
80-84 years	39	1.4	2.0
85 years and over	34	1.2	2.1

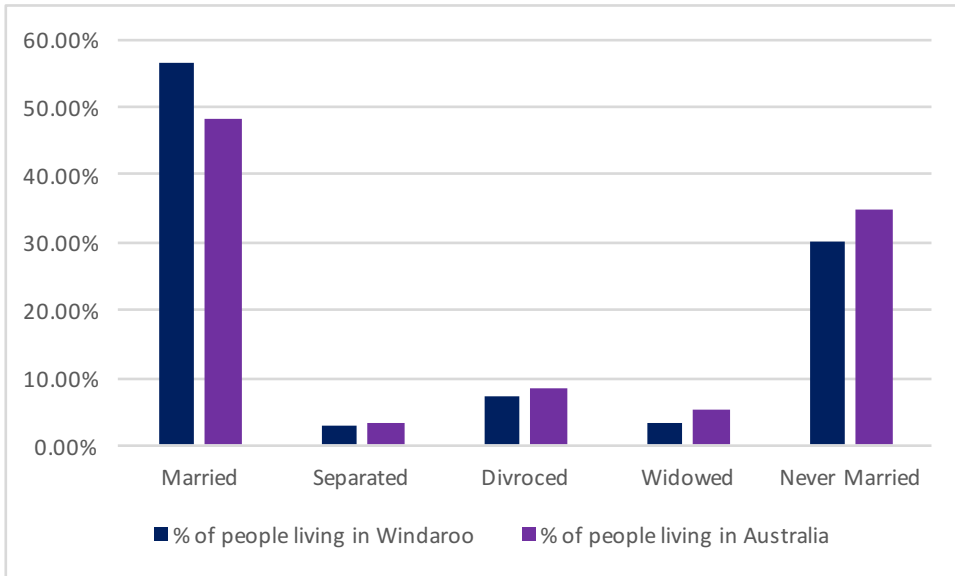
Source: ABS census data 2016

TABLE 2: BREAKDOWN BY AGE OF CHILDREN 0-8 YEARS IN WINDAROO 2016

AGE	NO OF PEOPLE IN WINDAROO	% WINDAROO	% AUSTRALIA
0	28	1	1.2
1	37	1.3	1.3
2	38	1.3	1.3
3	43	1.5	1.3
4	31	1.1	1.3
5	37	1.3	1.3
6	44	1.5	1.3
7	47	1.7	1.3
8	42	1.5	1.3

Source: ABS census data 2016

FIGURE I: REGISTERED MARITAL STATUS OF PEOPLE AGED 15 YEARS AND OVER IN WINDAROO



Source: ABS Census 2016 (people aged 15 and over)

Please note that there are small random adjustments made to all cell values to protect the confidentiality of data. These adjustments may cause the sum of rows or columns to differ by small amounts from table totals.



TABLE 3: FAMILY COMPOSITION IN WINDAROO

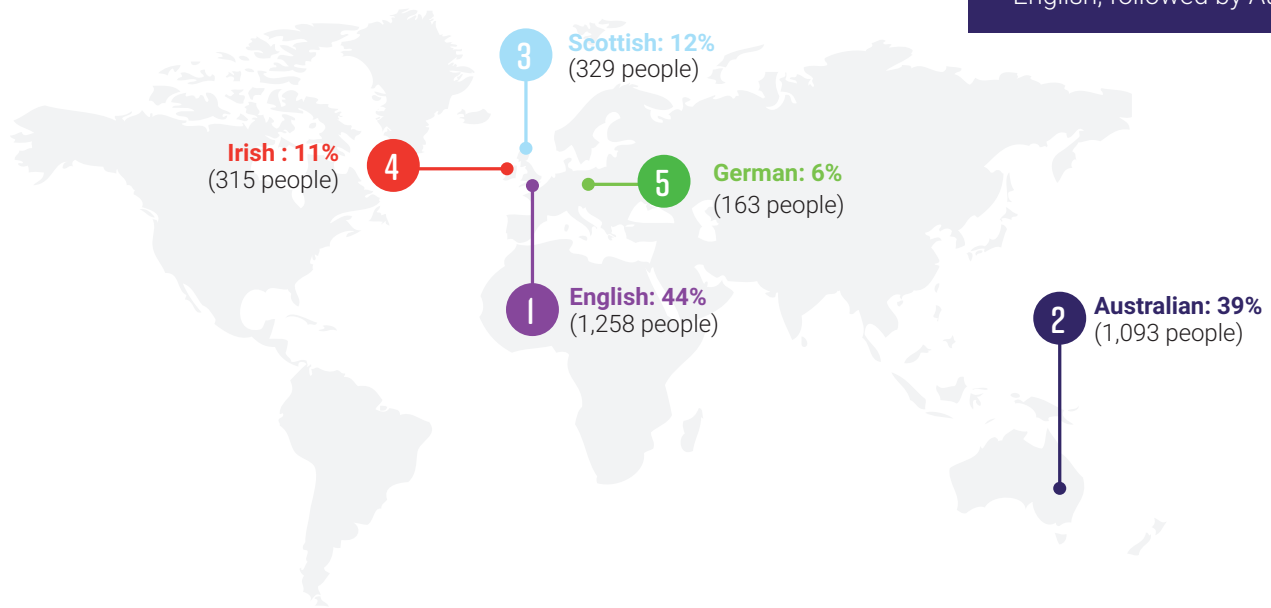
	FAMILIES IN WINDAROO	PERSONS IN WINDAROO
Couple family with no children	288	579
Couple family with:		
Children under 15 and:		
dependent students and non-dependent children	7	32
dependent students and no non-dependent children	45	208
no dependent students and with non-dependent children	15	82
no dependent students and no non-dependent children	187	748
Total:	257	1,063
No children under 15 and		
with dependent students and non-dependent children	19	93
with dependent students and no non-dependent children	37	114
no dependent students and with non-dependent children	96	308
Total	156	520
One parent family with:		
Children under 15 and:		
dependent students and non-dependent children	3	7
dependent students and no non-dependent children	12	48
no dependent students and with non-dependent children	3	14
no dependent students and no non-dependent children	39	112
Total	58	178
No children under 15 and:		
with dependent students and non-dependent children	8	25
with dependent students and no non-dependent children	7	14
no dependent students and with non-dependent children	41	79
Total	52	116
Other family	10	16
Total	816	2,475

Source: ABS Census 2016

Please note small random adjustments are made to cell values to protect the confidentiality of data. This may cause the sum of rows or columns to differ by small amounts from table totals.

CULTURAL BACKGROUND

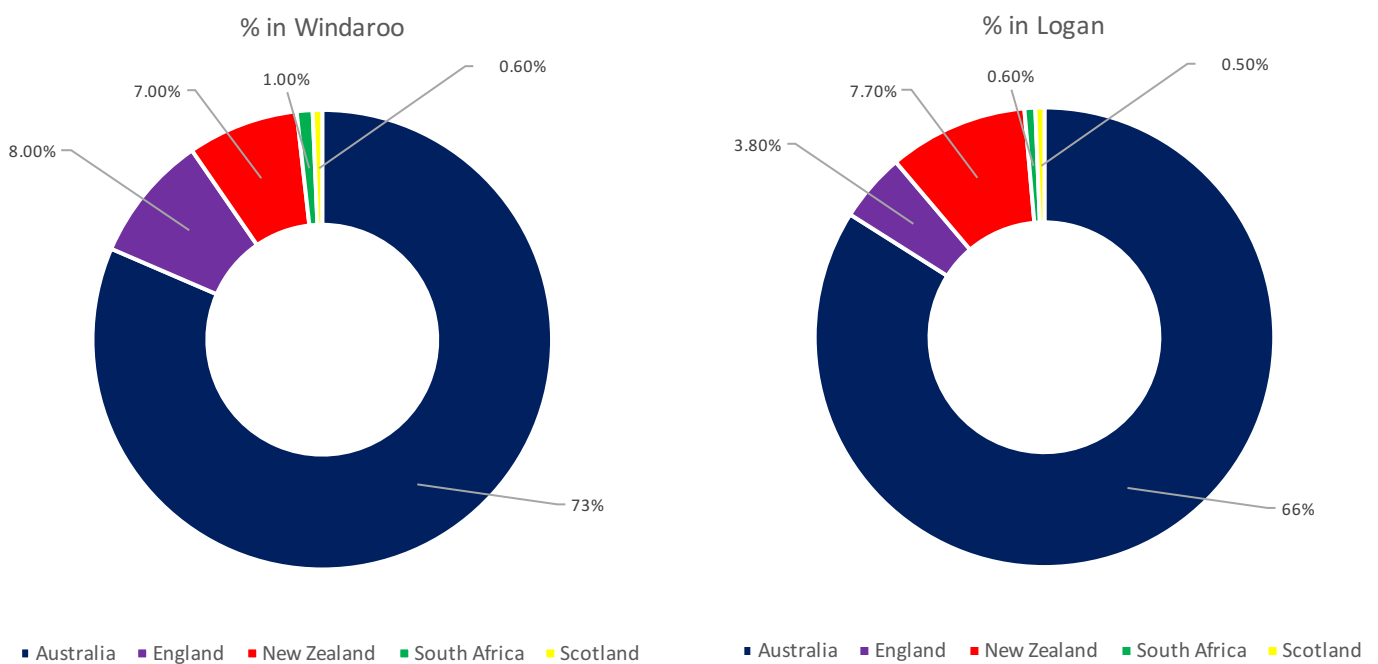
FIGURE 2: ANCESTRY OF PEOPLE LIVING IN WINDAROO (TOP 5 COUNTRIES OF BIRTH OF PARENTS)



Source: ABS Census 2016 (people aged 15 and over)

Please note that there are small random adjustments made to all cell values to protect the confidentiality of data. These adjustments may cause the sum of rows or columns to differ by small amounts from table totals.

FIGURE 3: COUNTRY OF BIRTH OF PEOPLE LIVING IN WINDAROO (TOP 5 RESPONSES)



Source: ABS Census 2016

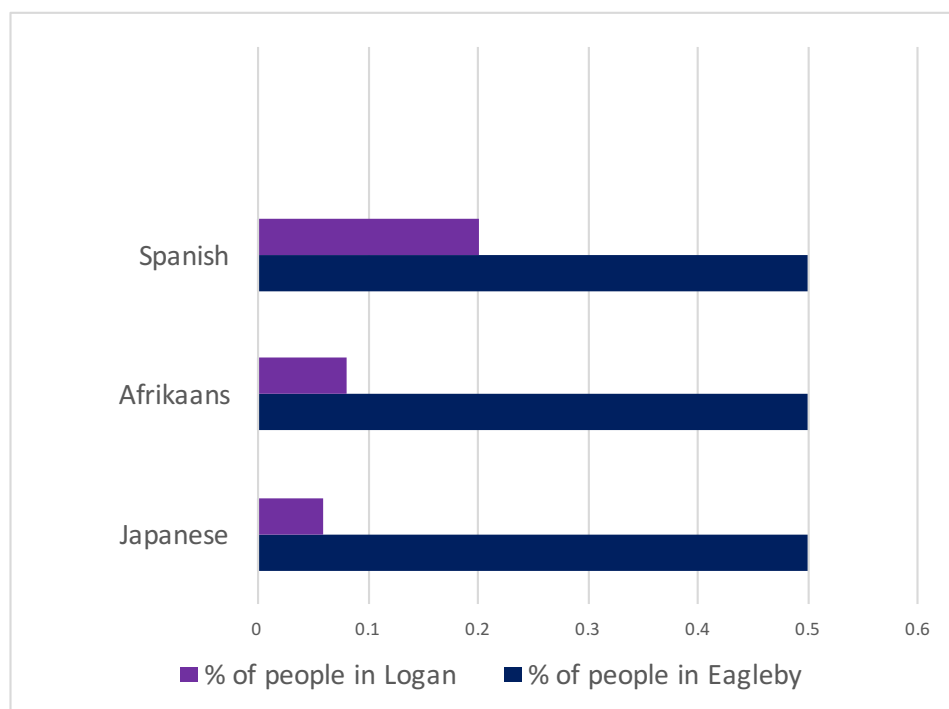
TABLE 4: ABORIGINAL AND/OR TORRES STRAIT ISLANDER PEOPLE

AGE	MALES	FEMALES	TOTAL
0-4 years	5	3	3
5-9 years	3	4	9
10-14 years	6	3	7
15-19 years	6	3	12
20-24 years	6	0	6
25-29 years	3	0	3
30-34 years	0	0	0
35-39 years	0	4	3
40-44 years	5	3	7
45-49 years	0	0	3
50-54 years	0	0	0
55-59 years	5	0	4
60-64 years	0	0	0
65 years and over	3	0	3
Total	42	24	69

Source: ABS Census 2016

Please note small random adjustments are made to cell values to protect the confidentiality of data. This may cause the sum of rows or columns to differ by small amounts from table totals.

FIGURE 4 : LANGUAGE OTHER THAN ENGLISH SPOKEN IN THE HOME (TOP 3 RESPONSES IN WINDAROO)



2,550 people (90%) of people in Windaroo speak only English in the home, compared to 78% in Logan as a whole.

EDUCATION

TABLE 5: NUMBER OF PEOPLE LIVING IN WINDAROO ATTENDING AN EDUCATIONAL INSTITUTION

EDUCATION TYPE	WINDAROO #	WINDAROO %	AUSTRALIA %
Preschool	21	1	4.8
Primary School - Govt.	171	6	18.2
Primary School - Catholic	32	1.1	5.3
Primary School - other non Govt.	77	2.7	3.2
Secondary School -Govt.	121	4.2	11.5
Secondary School - Catholic	59	2	4.7
Secondary School - other non Govt.	50	1.8	3.9
Technical or Further Education	36	1.3	5.9
University or tertiary institution	36	1.3	16.1
Other	20	0.7	2.8
Not stated	103	3.6	23.7



TABLE 13: LEVEL OF EDUCATION OF PEOPLE LIVING IN WINDAROO

Number of people 15 years and over: 8,694

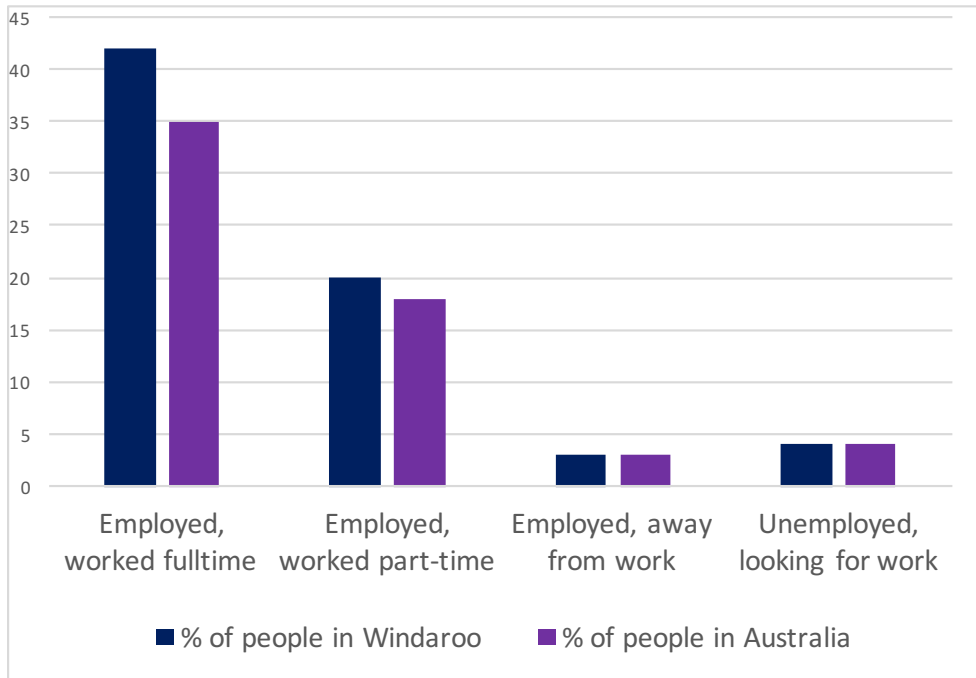
	NO. OF PEOPLE IN WINDAROO	% OF PEOPLE IN WINDAROO	% OF PEOPLE IN WINDAROO
Postgraduate Degree	0	0	.07
Doctoral Degree	0	0	0.61
Master Degree	27	1.2	3.1
Grad Dip and Grad Cert	0	0	0.14
Grad Dip	17	0.7	1.11
Grad Cert	9	0.4	0.3
Bachelor Degree	176	8	11.6
Adv Dip and Dip	0	0	.05
Adv Dip/Associate Degree	54	2.4	2.4
Diploma	121	5.4	3.7
Cert III and IV	396	18	11.2
Cert I and II	20	0.9	0.7
Cert	33	1.5	1.1
Level of education inadequately described	3	0.1	0.4
Level of education not stated	33	1.5	1.1

Source: ABS Census 2016



EMPLOYMENT AND HOUSEHOLD INFORMATION

FIGURE 7: SELECTED LABOUR FORCE STATISTICS (PEOPLE AGED 15 AND OVER)



Number of people aged 15 years and over in Windaroo: 2,233
Number of people in the labour force: 1,530
Number of people not in labour force: 624

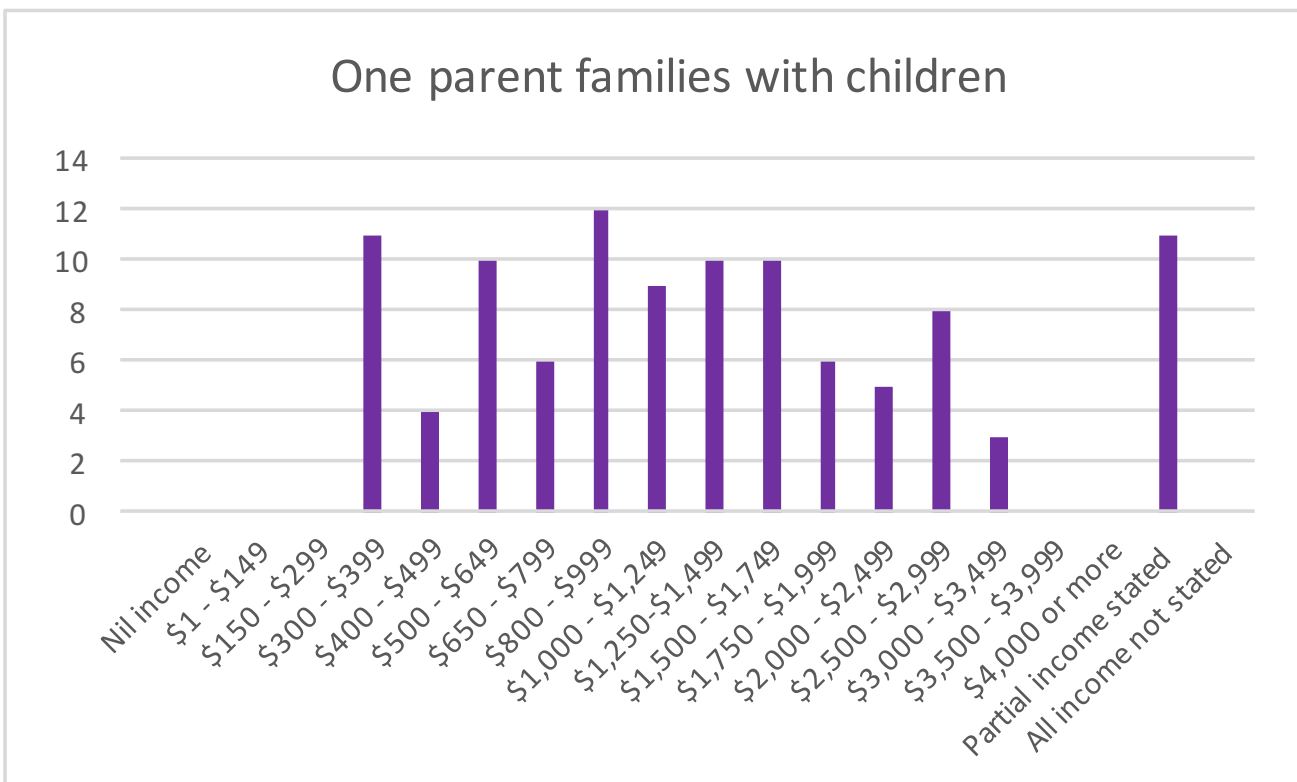
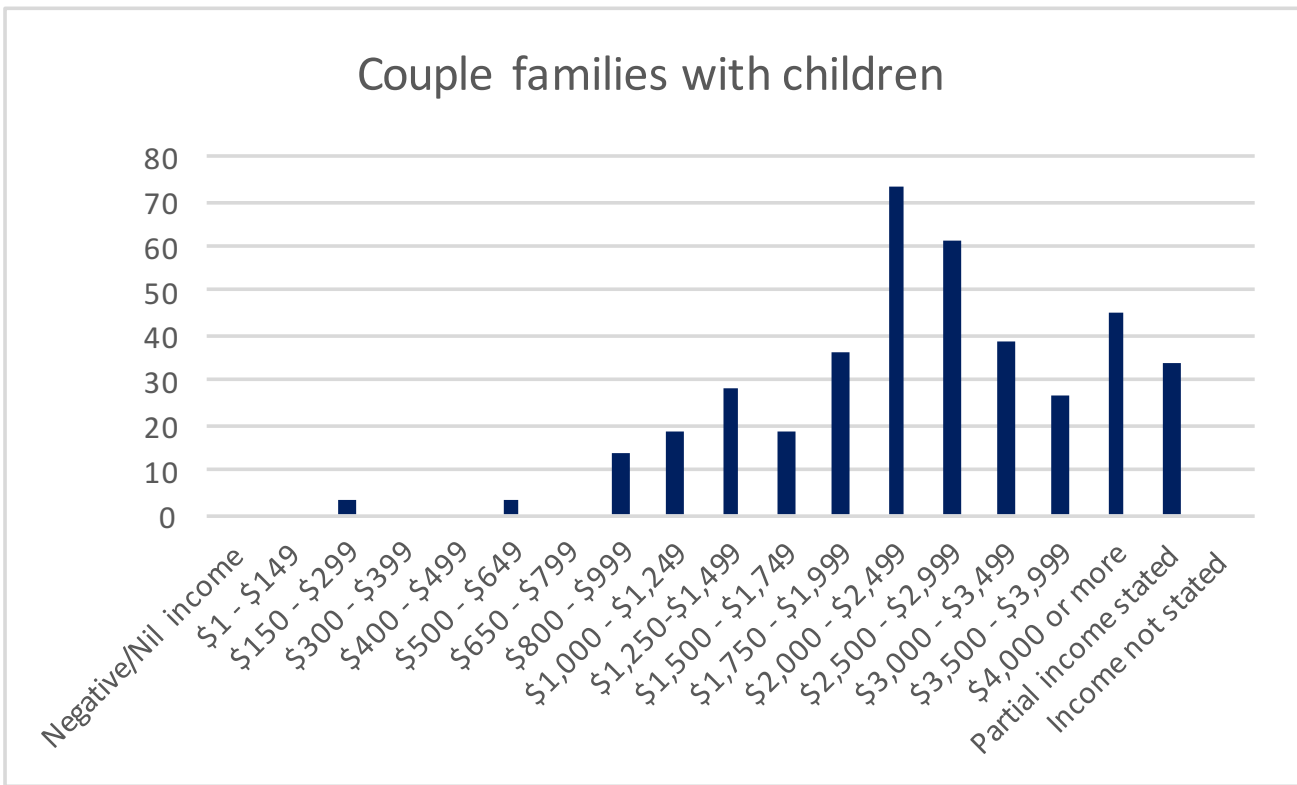
TABLE 14: NO OF PERSONS EMPLOYED BY OCCUPATION (PEOPLE AGED 15 YEARS AND OVER)

	% OF PEOPLE IN WINDAROO	% OF PEOPLE IN AUSTRALIA
Managers	9	7.3
Professionals	9	12.4
Technicians and trade workers	11	7.6
Community and personal service workers	6	6.0
Clerical and administrative workers	11	7.6
Sales workers	7	5.2
Machinery operators and drivers	4	3.5
Labourers	9	5.3
Inadequately described/not stated	0.9	0.9

Source: ABS Census 2016

Please note small random adjustments are made to cell values to protect the confidentiality of data. This may cause the sum of rows or columns to differ by small amounts from table totals.

FIGURE 8: TOTAL WEEKLY INCOME OF FAMILIES IN WINDAROO



Source: ABS Census 2016:

Please note small random adjustments are made to cell values to protect the confidentiality of data. This may cause the sum of rows or columns to differ by small amounts from table totals.

TABLE 15: HOUSEHOLD INCOME AND HOUSING COSTS - SELECTED MEDIANS AND AVERAGE

	WINDAROO	LOGAN	AUSTRALIA
Median age of persons	38	34	38
Median total personal income (\$/weekly)	747	635	662
Median total family income (\$/weekly)	1,959	1,546	1,734
Median total household income (\$/weekly)	1,866	1,416	1,438
Median mortgage repayment (\$/monthly)	1,950	1,733	1,755
Median rent (\$/weekly)	395	335	335
Average number of persons per bedroom	0.8	0.8	0.9
Average household size	3	2.9	2.6

Source: ABS Census 2016

Please note small random adjustments are made to cell values to protect the confidentiality of data. This may cause the sum of rows or columns to differ by small amounts from table totals.

INTERNET CONNECTION

TABLE 16: DWELLING INTERNET CONNECTION

	% OF DWELLINGS IN WINDAROO	% OF DWELLINGS IN LOGAN	% OF DWELLINGS IN AUSTRALIA
Internet accessed from dwelling	90	84.7	83.1
Internet not accessed from dwelling	7	12.6	14.1
Not stated	2	2.7	2.6

Source: ABS Census 2016

Please note small random adjustments are made to cell values to protect the confidentiality of data. This may cause the sum of rows or columns to differ by small amounts from table totals.

TRANSPORT

FIGURE 9: NUMBER OF MOTOR VEHICLES BY DWELLING

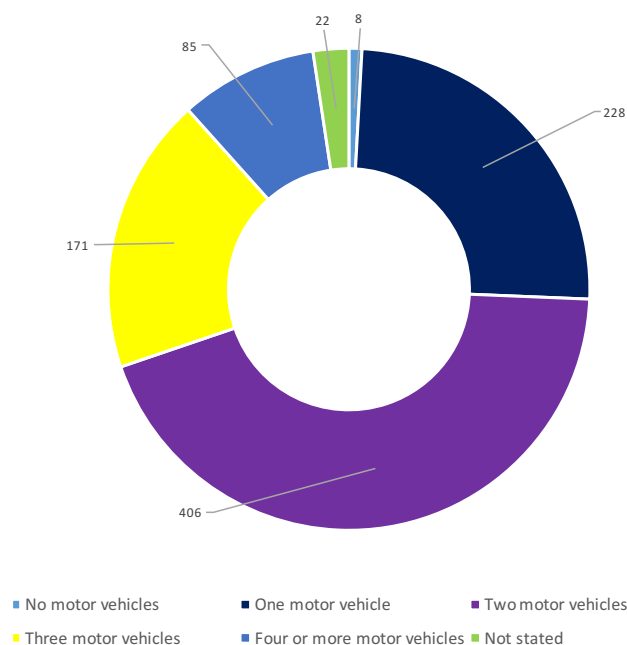


TABLE 17: PRIMARY SINGLE METHOD OF TRANSPORT TO WORK

	% IN WINDAROO	% IN LOGAN	% IN AUSTRALIA
Train	1.6	1.3	5.6
Bus	0.8	3.3	3.7
Ferry	0	0	0.1
Tram (includes light rail)	0	0	0.7
Taxi	0	0.1	0.2
Car, as driver	89	83.1	75.8
Car, as passenger	5	6.8	5.7
Truck	1.3	1.9	1.0
Motorbike/scooter	0.8	1.1	0.7
Bicycle	0	0.3	1.2
Other	1.3	0.6	0.8
Walked only	1.1	1.3	4.3

Source: ABS Census 2016

Please note small random adjustments are made to cell values to protect the confidentiality of data. This may cause the sum of rows or columns to differ by small amounts from table totals.

CRIME

FOR UP-TO-DATE CRIME INFORMATION ABOUT THIS AND OTHER LOGAN SUBURBS, GO TO [HTTPS://DATA.POLICE.QLD.GOV.AU/CRIMESTATSMOBILE/#/MAP](https://data.police.qld.gov.au/crimestatsmobile/#/map)



 (07) 3382 1163

 info@logantogether.org.au

 facebook.com/LoganTogether

 [@LoganTogether](https://twitter.com/LoganTogether)

