



# BERRINBA SUBURB PROFILE

# CONTENTS

INTRODUCTION ..... 01

POPULATION..... 02

CULTURAL BACKGROUND.....06

EDUCATION ..... 08

EMPLOYMENT & HOUSEHOLD INFORMATION..... 12

TRANSPORT ..... 01

## THE LOGAN TOGETHER ROADMAP



**READY TO HAVE KIDS**

**GOOD START IN LIFE**

**ON TRACK AT 3 YEARS**

**ON TRACK AT 5 YEARS**

**ON TRACK AT 8 YEARS**

### FAMILY FOUNDATIONS



**Priorities**

- ▶ Jobs and employment
- ▶ Secure housing
- ▶ Family safety
- ▶ Social/emotional wellbeing for all the family
- ▶ Parents feel knowledgeable and confident

### STRONG COMMUNITY



**Priorities**

- ▶ Social connection
- ▶ An empowered community

### EFFECTIVE SYSTEMS



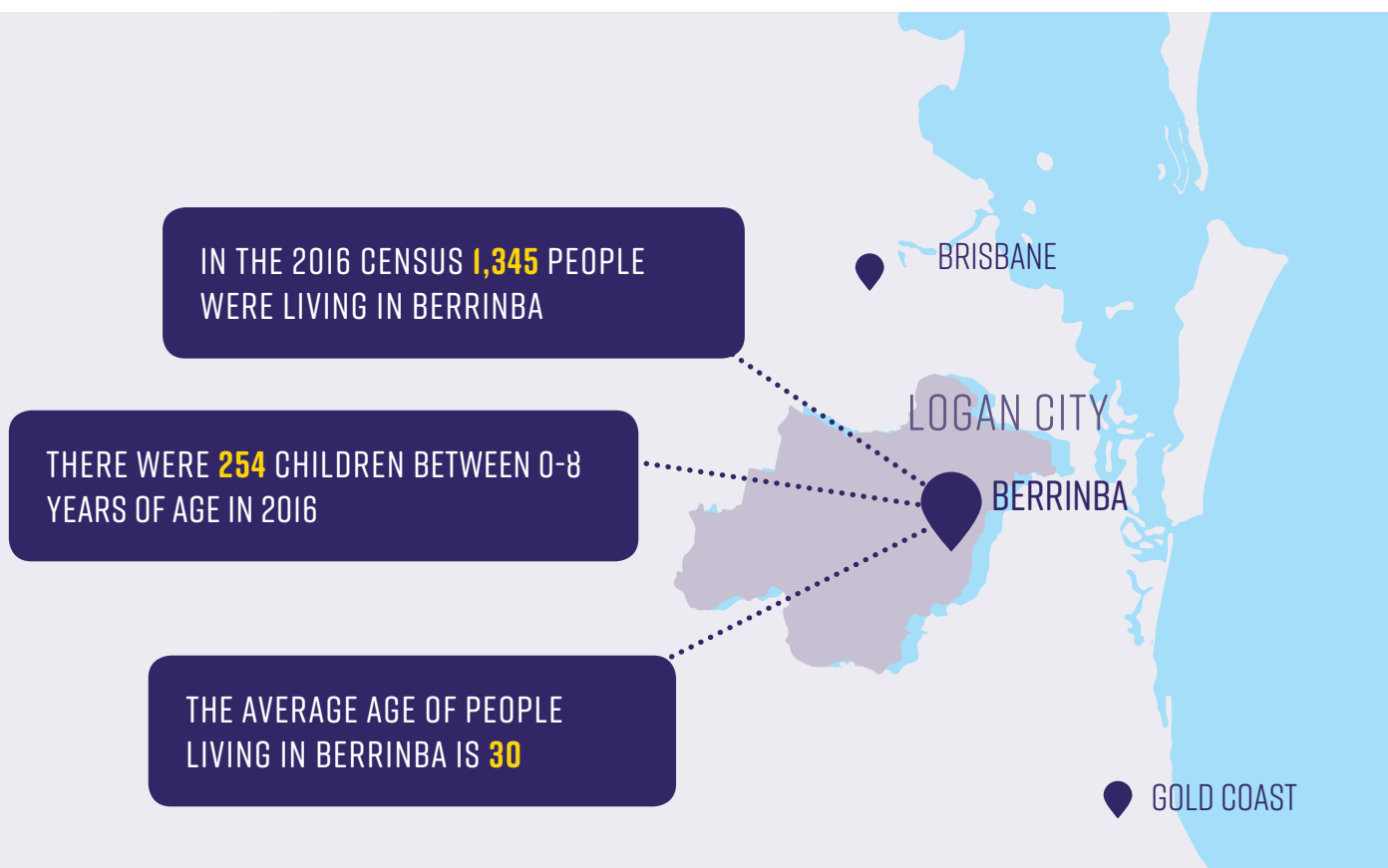
**Priorities**

- ▶ Social investment reform
- ▶ Child development workforce strategies
- ▶ Multi-agency service integration

# INTRODUCTION

The following profile has been developed to support the analysis of population characteristics at a suburb level. In addition to population characteristics there is a particular focus on children aged 0-8 years, with the Australian Early Development Census (AEDC) and Naplan data being included where available.

This information, as well as other Logan Suburb Profiles, can be found on the Logan Together website, along with a detailed Roadmap. This is a live document which is frequently being updated, so please visit [www.logantgether.org.au](http://www.logantgether.org.au) for the most up-to-date data.



# POPULATION

**TABLE 1: POPULATION OF THE BERRINBA COMMUNITY BY AGE IN 2016**

AGE	NO. OF PEOPLE IN BERRINBA	%. OF PEOPLE IN BERRINBA	AUSTRALIA %
0-4 years	146	10.9	6.3
5-9 years	131	9.7	6.4
10-14 years	87	6.5	6.0
15-19 years	75	5.6	6.1
20-24 years	77	5.7	6.7
25-29 years	132	9.8	7.1
30-34 years	180	13.4	7.3
35-39 years	110	8.2	6.7
40-44 years	80	5.9	6.8
45-49 years	78	5.8	6.8
50-54 years	71	5.3	6.5
55-59 years	47	3.5	6.2
60-64 years	59	4.4	5.6
65-69 years	40	3.0	5.1
70-74 years	29	2.2	3.8
75-79 years	18	1.3	2.8
80-84 years	5	0.4	2.0
85 years and over	67	0.6	2.1

Source: ABS Census 2016:

**Please note small random adjustments are made to cell values to protect the confidentiality of data. This may cause the sum of rows or columns to differ by small amounts from table totals.**

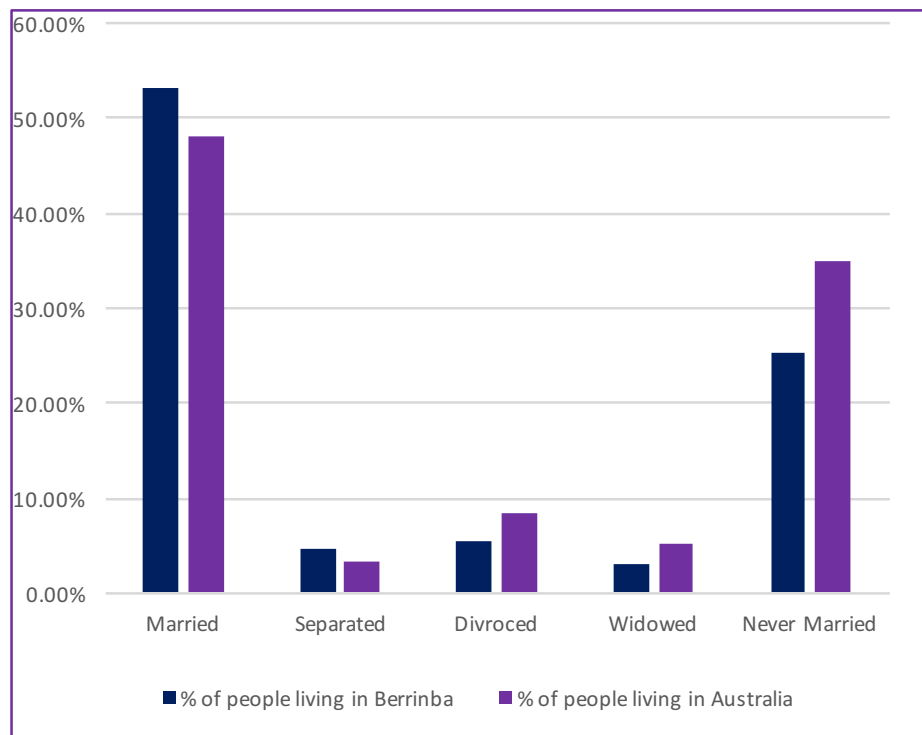
**TABLE 2: BREAKDOWN BY AGE OF CHILDREN 0-8 YEARS IN BERRINBA 2016**

AGE	NO OF PEOPLE IN BERRINBA	% BERRINBA	% AUSTRALIA
0	21	1.6	1.2
1	26	1.9	1.3
2	36	2.7	1.3
3	31	2.3	1.3
4	30	2.2	1.3
5	22	1.6	1.3
6	33	2.5	1.3
7	28	2.1	1.3
8	28	2.1	1.3

Source: ABS Census 2016:

**Please note small random adjustments are made to cell values to protect the confidentiality of data. This may cause the sum of rows or columns to differ by small amounts from table totals.**

**FIGURE I: REGISTERED MARITAL STATUS OF PEOPLE AGED 15 YEARS AND OVER IN BERRINBA**



Source: ABS Census 2016:

**Please note small random adjustments are made to cell values to protect the confidentiality of data. This may cause the sum of rows or columns to differ by small amounts from table totals.**



**TABLE 3: COMPOSITION OF FAMILIES LIVING IN BERRINBA**

	FAMILIES IN BERRINBA	PERSONS IN BERRINBA
<b>Couple family with no children</b>	102	207
<b>Couple family with:</b>		
Children under 15 and:	4	31
dependent students and non-dependent children	17	67
dependent students and no non-dependent children	3	28
no dependent students and with non-dependent children	130	508
no dependent students and no non-dependent children	153	636
Total:		
No children under 15 and		
with dependent students and non-dependent children	3	22
with dependent students and no non-dependent children	6	27
no dependent students and with non-dependent children	31	97
Total	45	142
<b>One parent family with:</b>		
Children under 15 and:		
dependent students and non-dependent children	0	7
dependent students and no non-dependent children	0	12
no dependent students and with non-dependent children	3	15
no dependent students and no non-dependent children	29	88
Total	40	119
No children under 15 and:	5	11
with dependent students and non-dependent children	0	4
with dependent students and no non-dependent children	11	30
no dependent students and with non-dependent children	16	38
Total		
<b>Other family</b>	3	12
Total	53	157

Source: ABS Census 2016:

**Please note small random adjustments are made to cell values to protect the confidentiality of data. This may cause the sum of rows or columns to differ by small amounts from table totals.**

# CULTURAL BACKGROUND

FIGURE 2: ANCESTRY OF PEOPLE LIVING IN BERRINBA (TOP 5 COUNTRIES OF BIRTH OF PARENTS)

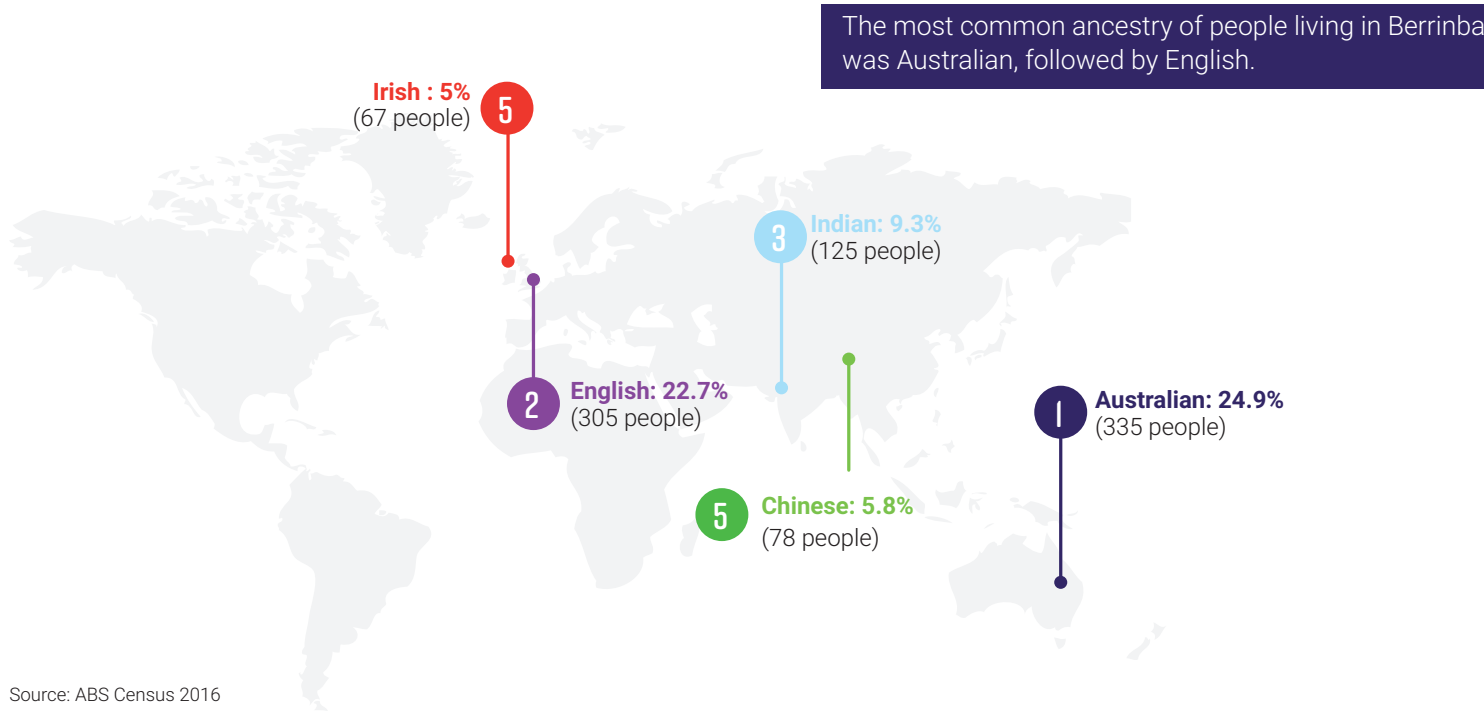
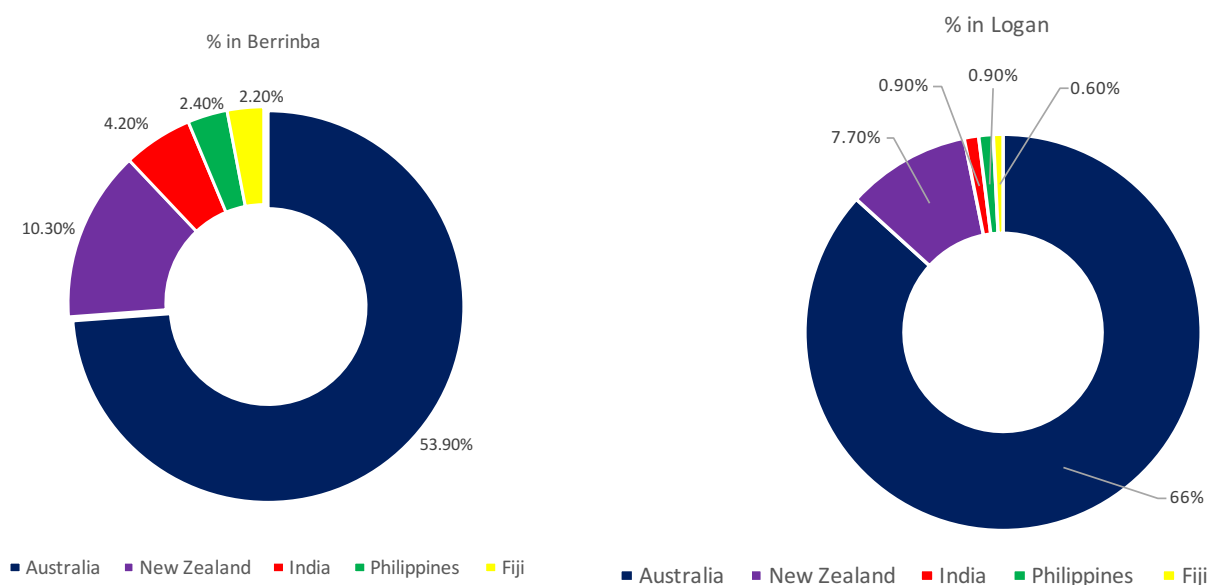


FIGURE 3: COUNTRY OF BIRTH OF PEOPLE LIVING IN BERRINBA



**TABLE 4: ABORIGINAL AND/OR TORRES STRAIT ISLANDER PEOPLE**

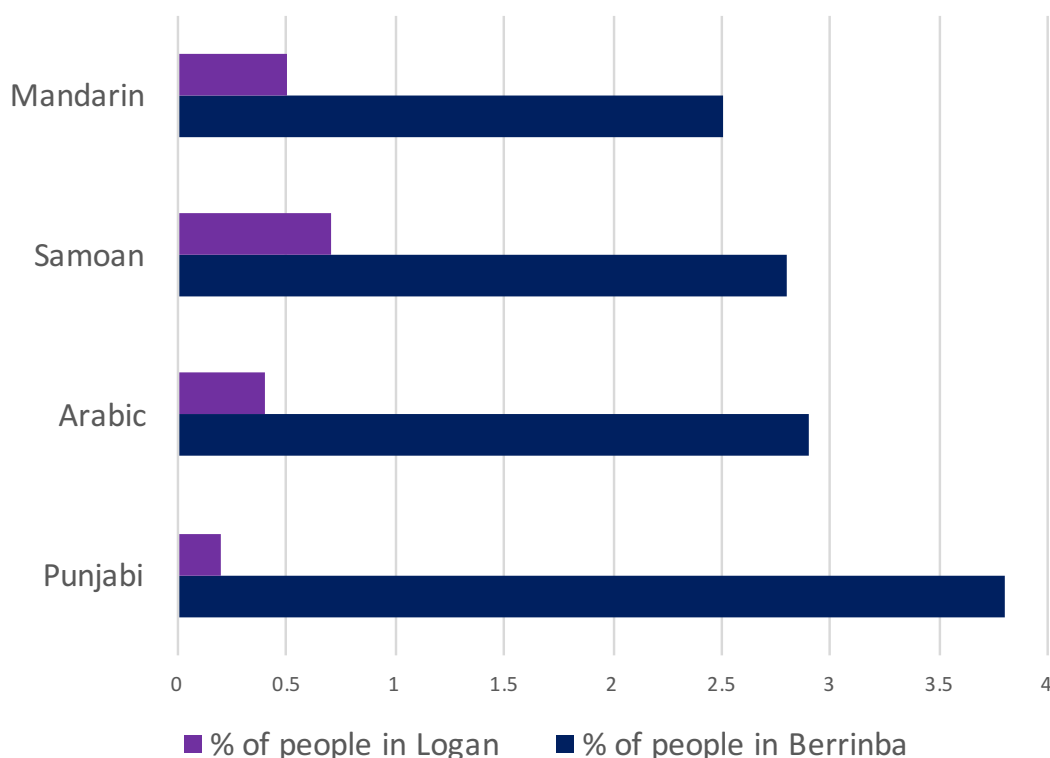
There are 626 (5.9%) people living in Berrinba that identify as Aboriginal and or Torres Strait Islander.

AGE	MALES	FEMALES	TOTAL
0-4 years	3	0	3
5-9 years	0	0	5
10-14 years	7	0	4
15-19 years	0	0	0
20-24 years	3	0	4
25-29 years	0	6	3
30-34 years	0	3	4
35-39 years	0	0	0
40-44 years	0	0	3
45-49 years	0	4	6
50-54 years	0	0	0
55-59 years	0	0	0
60-64 years	0	0	0
65 years and over	0	0	0
<b>Total</b>	<b>17</b>	<b>19</b>	<b>37</b>

Source: ABS Census 2016:

Please note small random adjustments are made to cell values to protect the confidentiality of data. This may cause the sum of rows or columns to differ by small amounts from table totals.

**FIGURE 4: LANGUAGE OTHER THAN ENGLISH SPOKEN AT HOME (TOP FOUR RESPONSES)**



796 people (59%) in Berrinba speak only English in the home, compared to 78% in Logan as a whole.



# EDUCATION

**TABLE 5: NUMBER OF PEOPLE LIVING IN BERRINBA ATTENDING AN EDUCATIONAL INSTITUTION**

EDUCATION TYPE	BERRINBA #	BERRINBA %	AUSTRALIA %
Preschool	24	6.0	4.8
Primary School - Govt.	113	28.1	18.2
Primary School - Catholic	15	3.7	5.3
Primary School - other non Govt.	25	6.2	3.2
Secondary School -Govt.	56	13.9	11.5
Secondary School - Catholic	7	0.5	4.7
Secondary School - other non Govt.	7	0.5	3.9
Technical or Further Education	18	1.3	5.9
University or tertiary institution	34	2.5	16.1
Other	12	0.9	2.8
Not stated	84	6.2	23.7

There is currently one school in Berrinba.

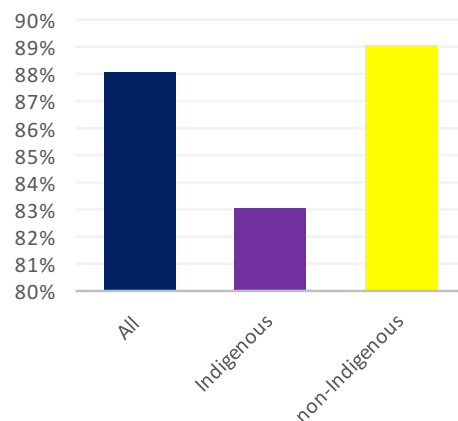
SCHOOL NAME	SECTOR	TYPE	STATUS AS AT SEPTEMBER 2017
Berrinba East State School	Government	Combined	Prep - 6

**TABLE 6: BERRINBA EAST STATE SCHOOL ENROLMENTS (PREP-YEAR 6)**

Berrinba East State School (Prep- Year 6) was established in 1977 and is a co-educational state school with approximately 500 students drawn from a rich cultural tapestry, especially from the Pacific Islands.

YEAR	TEACHING STAFF	TOTAL	FEMALE	MALE	INDIGENOUS	LANGUAGE BACKGROUND OTHER THAN ENGLISH
2015	34	432	220	212	11%	39%
2016	37	448	226	222	11%	38%

**FIGURE 5: BERRINBA EAST STATE SCHOOL STUDENT ATTENDANCE - TERM 3 2017**



# AUSTRALIAN EARLY DEVELOPMENT CENSUS (AEDC)

The AEDC is a nationwide measure that looks at how well children across Australia are growing up or ‘developing’.

The AEDC looks at five different elements or domains that are important for children’s development. These are: physical health and wellbeing, social competence, emotional maturity, language and cognitive skills (school-based); and communication skills and general knowledge.

The AEDC is collected every three years in schools across Australia. The data collection was completed in 2009, 2012 and 2015.

**TABLE 7: BERRINBA AEDC (2015 DATA) NUMBER AND % OF CHILDREN DEVELOPMENTALLY VULNERABLE ON ONE OR MORE DOMAINS**

# CHILDREN	PHYSICAL HEALTH & WELLBEING	SOCIAL COMPETENCE	EMOTIONAL MATURITY	LANGUAGE & COGNITIVE SKILLS	COMMUNICATION SKILLS & GENERAL KNOWLEDGE	VULNERABLE ON 1 OR > DOMAINS	VULNERABLE ON 2 OR > DOMAINS
24	8.7%	26.1%	13%	13%	4.3%	34.8%	17.4%

Berrinba ranked No. 1 in the top ten suburbs that were developmentally vulnerable in social competence.



# NAPLAN PERFORMANCE

The National Assessment Program – Literacy and Numeracy (NAPLAN) assesses all students in Australian schools in Years 3, 5, 7 and 9.

**TABLE 8: NAPLAN RESULTS PERCENTAGE FOR BERRINBA EAST STATE SCHOOL YEAR 3 AGAINST STATISTICALLY SIMILAR SCHOOLS AND ALL AUSTRALIAN SCHOOLS**

YEAR 3 2016	READING	WRITING	SPELLING	GRAMMAR PUNCTUATION	NUMERACY
Berrinba East	<NMS: 15% NMS: 31% >NMS: 53%	<NMS: 8% NMS: 18% >NMS: 72%	<NMS: 24% NMS: 16% >NMS: 58%	<NMS: 13% NMS: 21% >NMS: 64%	<NMS: 13% NMS: 40% >NMS: 47%
Statistically Similar Schools	<NMS: 9% NMS: 21% >NMS: 66%	<NMS: 4% NMS: 12% >NMS: 79%	<NMS: 12% NMS: 18% >NMS: 67%	<NMS: 9% NMS: 11% >NMS: 76%	<NMS: 9% NMS: 25% >NMS: 62%
All Australian Schools	<NMS: 3% NMS: 8% >NMS: 86%	<NMS: 2% NMS: 4% >NMS: 92%	<NMS: 4% NMS: 8% >NMS: 86%	<NMS: 3% NMS: 7% >NMS: 88%	<NMS: 3% NMS: 11% >NMS: 82%

**TABLE 9: NAPLAN RESULTS PERCENTAGE FOR BERRINBA EAST STATE SCHOOL YEAR 5 AGAINST ALL AUSTRALIAN SCHOOLS**

YEAR 5 2016	READING	WRITING	SPELLING	GRAMMAR PUNCTUATION	NUMERACY
Berrinba East	<NMS: 24% NMS: 33% >NMS: 43%	<NMS: 28% NMS: 22% >NMS: 50%	<NMS: 25% NMS: 28% >NMS: 45%	<NMS: 30% NMS: 21% >NMS: 49%	<NMS: 36% NMS: 28% >NMS: 35%
Statistically Similar Schools	<NMS: 17% NMS: 23% >NMS: 57%	<NMS: 14% NMS: 20% >NMS: 64%	<NMS: 15% NMS: 18% >NMS: 64%	<NMS: 13% NMS: 23% >NMS: 62%	<NMS: 12% NMS: 25% >NMS: 60%
All Australian Schools	<NMS: 4% NMS: 10% >NMS: 83%	<NMS: 5% NMS: 13% >NMS: 80%	<NMS: 6% NMS: 12% >NMS: 81%	<NMS: 5% NMS: 10% >NMS: 83%	<NMS: 4% NMS: 13% >NMS: 82%

**TABLE 10: LEVEL OF EDUCATION OF PEOPLE LIVING IN BERRINBA**  
 Number of people 15 years and over: 587

	NO. OF PEOPLE IN BERRINBA	% OF PEOPLE IN BERRINBA	% OF PEOPLE IN AUSTRALIA
Postgraduate Degree	0	0	.07
Doctoral Degree	0	0	0.61
Master Degree	0	0	3.1
Grad Dip and Grad Cert	0	0	0.14
Grad Dip	0	0	1.11
Grad Cert	0	0	0.3
Bachelor Degree	12	2	11.6
Adv Dip and Dip	0	0	.05
Adv Dip/Associate Degree	3	0.5	2.4
Diploma	15	2.5	3.7
Cert III and IV	78	13.1	11.2
Cert I and II	0	0	0.7
Cert	3	0.5	1.1
Level of education inadequately described	3	0.4	0.4
Level of education not stated	4	0.7	1.1

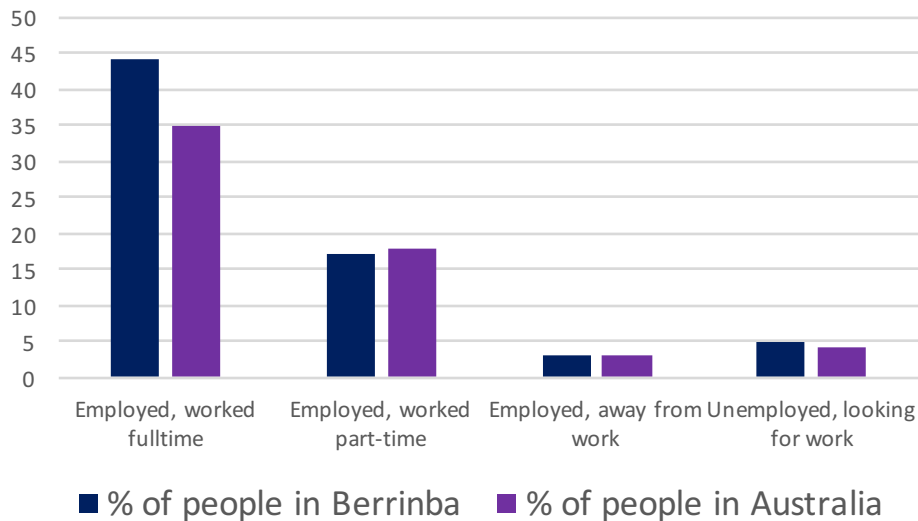
Source: ABS Census 2016

Please note small random adjustments are made to cell values to protect the confidentiality of data. This may cause the sum of rows or columns to differ by small amounts from table totals.



# EMPLOYMENT AND HOUSEHOLD INFORMATION

FIGURE 6: SELECTED LABOUR FORCE STATISTICS (PEOPLE AGED 15 AND OVER)



Number of people aged 15 years and over in Berrinba: 987  
 Number of people in the labour force: 672  
 Number of people not in labour force: 257

Source: ABS Census 2016

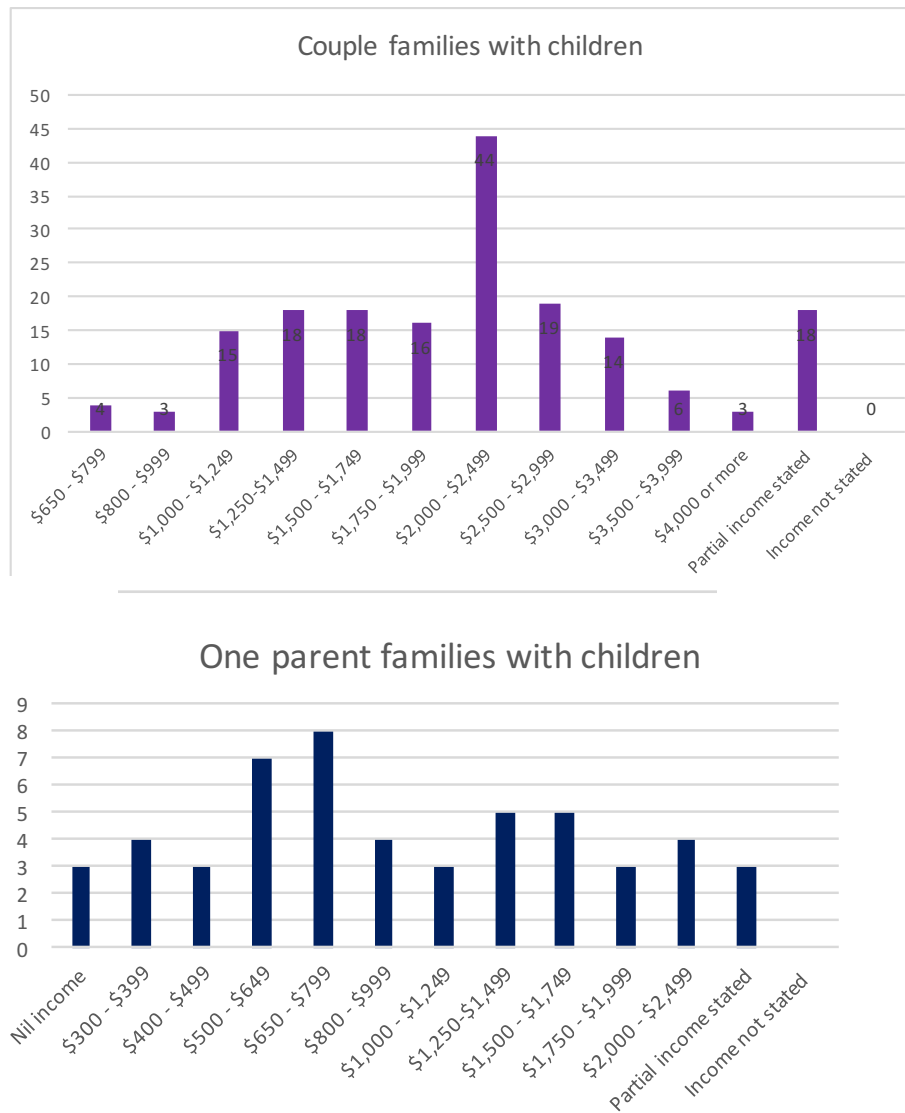
TABLE II: NO OF PERSONS EMPLOYED BY OCCUPATION (PEOPLE AGED 15 YEARS AND OVER)

	% OF PEOPLE IN BERRINBA	% OF PEOPLE IN AUSTRALIA
Managers	5.6	7.3
Professionals	9.1	12.4
Technicians and trade workers	9.1	7.6
Community and personal service workers	7.5	6.0
Clerical and administrative workers	9.4	7.6
Sales workers	6.1	5.2
Machinery operators and drivers	7.9	3.5
Labourers	7.5	5.3
Inadequately described/not stated	0.7	0.9

Source: ABS Census 2016:

Please note small random adjustments are made to cell values to protect the confidentiality of data. This may cause the sum of rows or columns to differ by small amounts from table totals.

**FIGURE 7: TOTAL WEEKLY INCOME OF FAMILIES IN BERRINBA**



Source: ABS Census 2016

Please note small random adjustments are made to cell values to protect the confidentiality of data. This may cause the sum of rows or columns to differ by small amounts from table totals.



**TABLE 12: HOUSEHOLD INCOME AND HOUSING COSTS - SELECTED MEDIANS AND AVERAGE**

	BERRINBA	LOGAN	AUSTRALIA
Median age of persons	31	34	38
Median total personal income (\$/weekly)	753	635	662
Median total family income (\$/weekly)	1,735	1,546	1,734
Median total household income (\$/weekly)	1,754	1,416	1,438
Median mortgage repayment (\$/monthly)	1,928	1,733	1,755
Median rent (\$/weekly)	410	335	335
Average number of persons per bedroom	0.8	0.8	0.9
Average household size	3.3	2.9	2.6

Source: ABS Census 2016:

Please note small random adjustments are made to cell values to protect the confidentiality of data. This may cause the sum of rows or columns to differ by small amounts from table totals.

## INTERNET CONNECTION

**TABLE 13: DWELLING INTERNET CONNECTION**

	% OF DWELLINGS IN BERRINBA	% OF DWELLINGS IN LOGAN	% OF DWELLINGS IN AUSTRALIA
Internet accessed from dwelling	92.8	84.7	83.1
Internet not accessed from dwelling	6.7	12.6	14.1
Not stated	0.8	2.7	2.6
Total			

Source: ABS Census 2016:

Please note small random adjustments are made to cell values to protect the confidentiality of data. This may cause the sum of rows or columns to differ by small amounts from table totals.

## CRIME

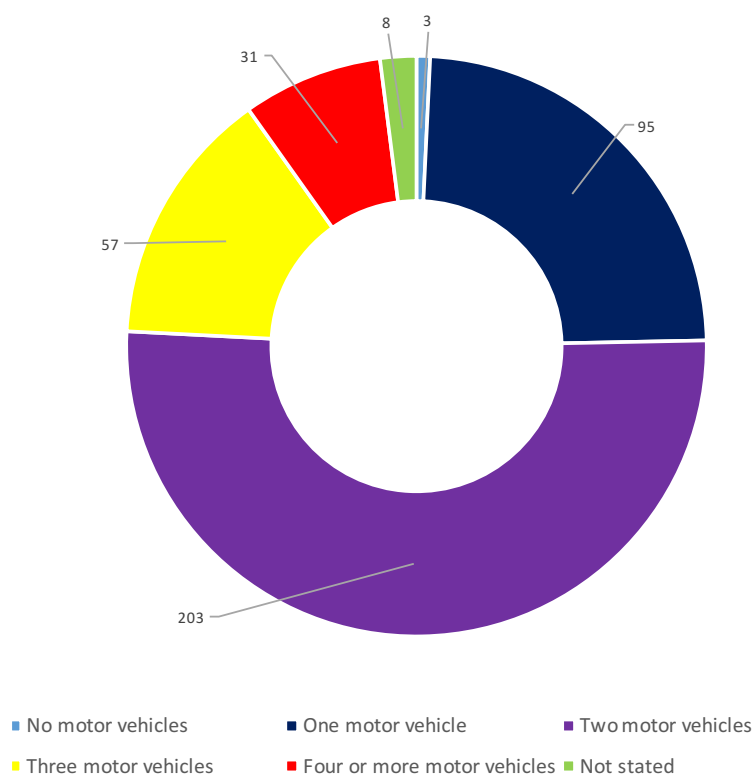
LIVE CRIME DATA IS AVAILABLE AT

[HTTPS://DATA.POLICE.QLD.GOV.AU/CRIMESTATSMOBILE/#/MAP](https://data.police.qld.gov.au/crimestatsmobile/#/map)



# TRANSPORT

FIGURE 8: NUMBER OF MOTOR VEHICLES BY DWELLING



Source: ABS Census 2016

Please note small random adjustments are made to cell values to protect the confidentiality of data. This may cause the sum of rows or columns to differ by small amounts from table totals.

TABLE 14: PRIMARY SINGLE METHOD OF TRANSPORT TO WORK

	% IN BERRINBA	% IN LOGAN	% IN AUSTRALIA
Train	1.7	1.3	5.6
Bus	2.8	3.3	3.7
Ferry	0	0	0.1
Tram (includes light rail)	0	0	0.7
Taxi	0	0.1	0.2
Car, as driver	87.3	83.1	75.8
Car, as passenger	5.4	6.8	5.7
Truck	0.9	1.9	1.0
Motorbike/scooter	1.1	1.1	0.7
Bicycle	0.6	0.3	1.2
Other	0	0.6	0.8
Walked only	0	1.3	4.3

Source: ABS Census 2016:

Please note small random adjustments are made to cell values to protect the confidentiality of data. This may cause the sum of rows or columns to differ by small amounts from table totals.





 (07) 3382 1163  [info@logantogether.org.au](mailto:info@logantogether.org.au)  [facebook.com/LoganTogether](https://facebook.com/LoganTogether)  [@LoganTogether](https://twitter.com/LoganTogether)

