



MUNDOOLUN SUBURB PROFILE

CONTENTS

INTRODUCTION 01

POPULATION..... 02

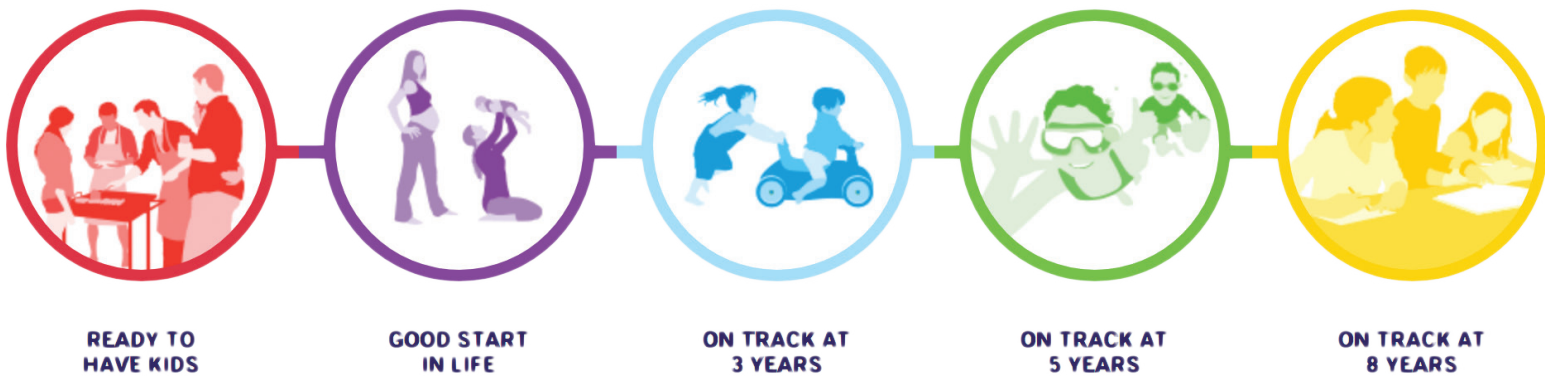
CULTURAL BACKGROUND..... 07

EDUCATION 07


EMPLOYMENT & HOUSEHOLD INFORMATION..... 08

TRANSPORT..... 10

THE LOGAN TOGETHER ROADMAP



FAMILY FOUNDATIONS



Priority

- Adult job employment
- Homelessness
- Food security
- Mental health and substance use services
- Financial literacy and budgeting services

STRONG COMMUNITY



Priority

- Social connection
- Neighborhood connectivity

EFFECTIVE SYSTEMS



Priority

- Sustainable service systems
- Data-informed decision-making
- Interagency service integration

INTRODUCTION

The following profile has been developed to support the analysis of population characteristics at a suburb level. In addition to population characteristics there is a particular focus on children aged 0-8 years, with the Australian Early Development Census (AEDC) and Naplan data being included where available.

This information, as well as other Logan Suburb Profiles, can be found on the Logan Together website, along with a detailed Roadmap. This is a live document which is frequently being updated, so please visit www.logantogether.org.au for the most up-to-date data.

52% OF THE POPULATION IN MUNDOOLUN IS AGED BETWEEN 0 AND 40 YEARS.

THERE WERE **224** CHILDREN BETWEEN 0-8 YEARS OF AGE IN 2016

IN THE 2016 CENSUS **1,551** PEOPLE WERE LIVING IN MUNDOOLUN



POPULATION

TABLE 1: POPULATION OF THE HILLCREST COMMUNITY BY AGE IN 2016

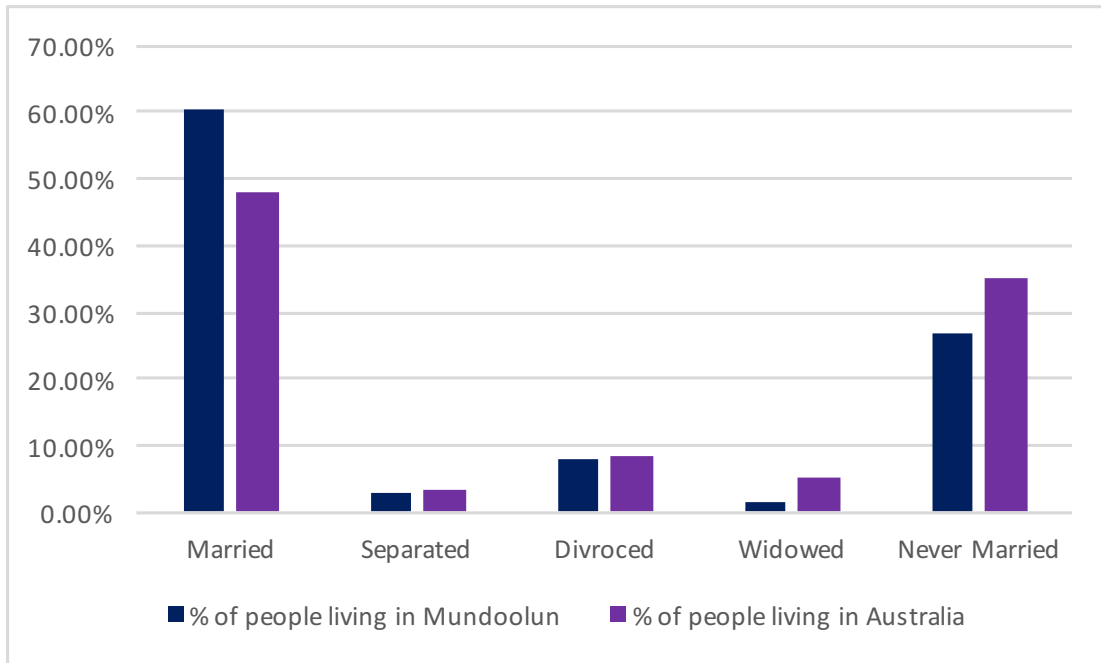
AGE	9NO. OF PEOPLE IN MUNDOOLUN	0.3%. OF PEOPLE IN 0.6MUNDOOLUN	AUSTRALIA %
0-4 years	101	6.5	6.3
5-9 years	151	9.7	6.4
10-14 years	150	9.7	6.0
15-19 years	116	7.5	6.1
20-24 years	53	3.4	6.7
25-29 years	49	3.2	7.1
30-34 years	68	4.4	7.3
35-39 years	114	7.4	6.7
40-44 years	149	9.6	6.8
45-49 years	139	9	6.8
50-54 years	117	7.5	6.5
55-59 years	110	7.1	6.2
60-64 years	94	6.1	5.6
65-69 years	61	3.9	5.1
70-74 years	36	2.3	3.8
75-79 years	19	1.2	2.8
80-84 years	4	0.3	2.0
85 years and over	9	0.6	2.1

Source: ABS census data 2016

TABLE 2: BREAKDOWN BY AGE OF CHILDREN 0-8 YEARS IN MUNDOOLUN 2016

AGE	NO OF PEOPLE IN MUNDOOLUN	% MUNDOOLUN	% AUSTRALIA
0	11	0.7	1.2
1	18	1.2	1.3
2	8	0.5	1.3
3	26	1.7	1.3
4	29	1.9	1.3
5	21	1.4	1.3
6	32	2.1	1.3
7	29	1.9	1.3
8	36	2.3	1.3

FIGURE I: REGISTERED MARITAL STATUS OF PEOPLE AGED 15 YEARS AND OVER IN MUNDOOLUN



Source: ABS Census 2016 (people aged 15 and over)



TABLE 3: FAMILY COMPOSITION OF PEOPLE LIVING IN MUNDOOLUN

	FAMILIES IN MUNDOOLUN	PERSONS IN MUNDOOLUN
Couple family with no children	156	308
Couple family with:		
Children under 15 and:		
dependent students and non-dependent children	10	46
dependent students and no non-dependent children	28	131
no dependent students and with non-dependent children	7	34
no dependent students and no non-dependent children	113	459
Total:	153	676
No children under 15 and		
with dependent students and non-dependent children	6	39
with dependent students and no non-dependent children	6	27
no dependent students and with non-dependent children	30	107
Total	49	173
One parent family with:		
Children under 15 and:		
dependent students and non-dependent children	0	0
dependent students and no non-dependent children	8	21
no dependent students and with non-dependent children	4	19
no dependent students and no non-dependent children	19	54
Total	30	96
No children under 15 and:		
with dependent students and non-dependent children	0	3
with dependent students and no non-dependent children	0	0
no dependent students and with non-dependent children	14	27
Total	13	30
Other family	3	9
Total	408	1,283

Source: ABS Census 2016

Please note small random adjustments are made to cell values to protect the confidentiality of data. This may cause the sum of rows or columns to differ by small amounts from table totals.

CULTURAL BACKGROUND

FIGURE 2: ANCESTRY OF PEOPLE LIVING IN MUNDOOLUN (TOP 5 COUNTRIES OF BIRTH OF PARENTS)

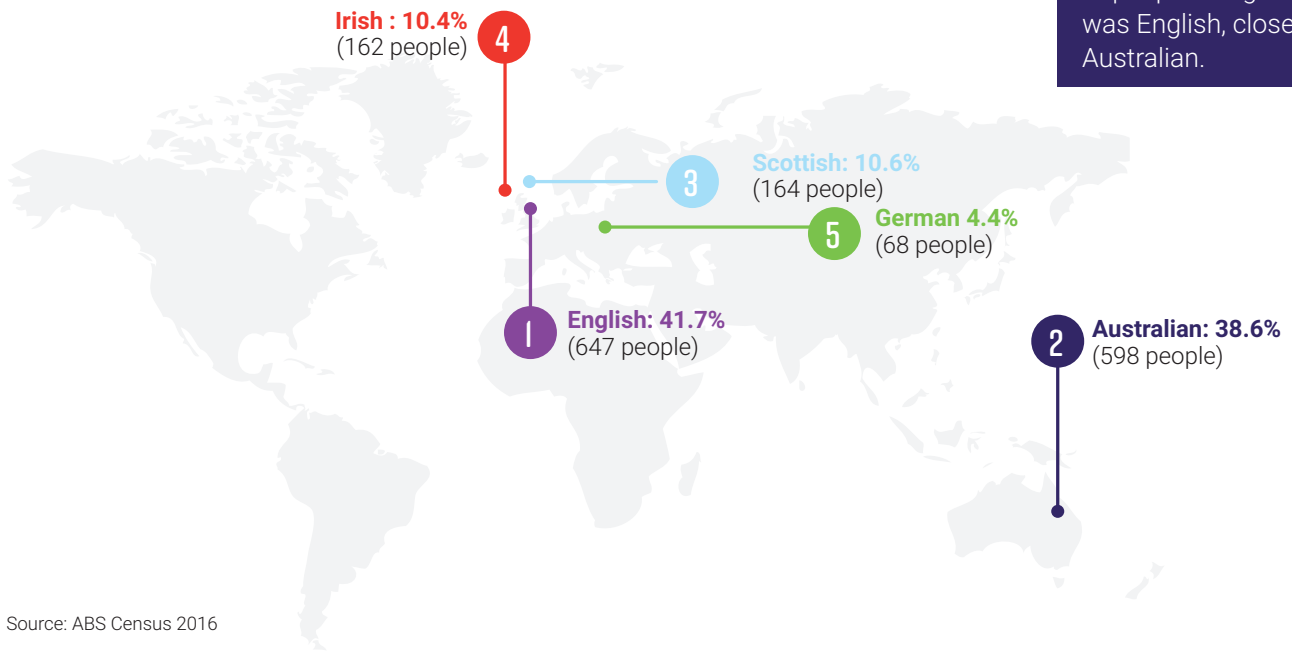


FIGURE 3: COUNTRY OF BIRTH OF PEOPLE LIVING IN MUNDOOLUN

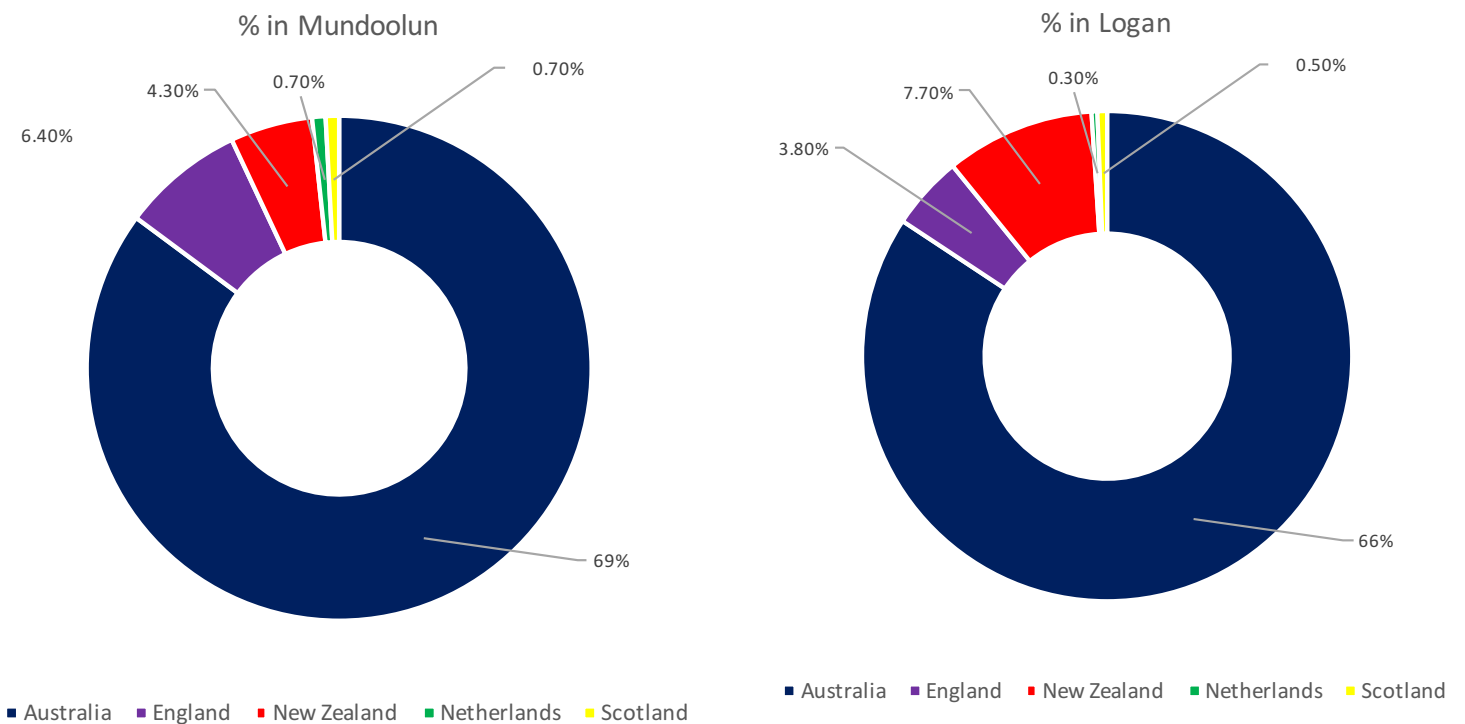


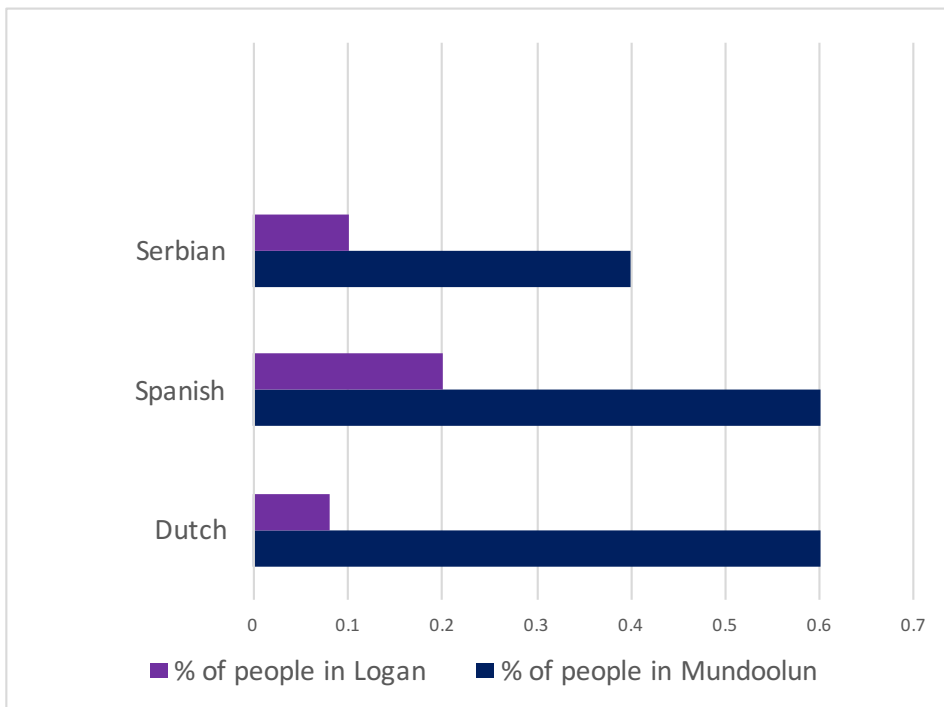
TABLE 4: ABORIGINAL AND/OR TORRES STRAIT ISLANDER PEOPLE

AGE	MALES	FEMALES	TOTAL
0-4 years	0	0	0
5-9 years	0	3	3
10-14 years	0	0	3
15-19 years	8	0	6
20-24 years	0	0	0
25-29 years	0	0	0
30-34 years	0	0	0
35-39 years	0	3	3
40-44 years	0	3	8
45-49 years	3	0	5
50-54 years	0	0	3
55-59 years	0	0	0
60-64 years	0	0	0
65 years and over	0	0	0
Total	13	12	31

Source: ABS Census 2016

Please note small random adjustments are made to cell values to protect the confidentiality of data. This may cause the sum of rows or columns to differ by small amounts from table totals.

FIGURE 4: LANGUAGE OTHER THAN ENGLISH SPOKEN AT HOME (TOP THREE RESPONSES)



1,301 people (83.9%) of people in Mundoolun speak only English in the home, compared to 78% in Logan as a whole.

Source: ABS Census 2016

Please note small random adjustments are made to cell values to protect the confidentiality of data. This may cause the sum of rows or columns to differ by small amounts from table totals.

EDUCATION

TABLE 5: NUMBER OF PEOPLE LIVING IN MUNDOOLUN ATTENDING AN EDUCATIONAL INSTITUTION

EDUCATION TYPE	195MUNDOOLUN #	1MUNDOOLUN %12.6	AUSTRALIA %
Preschool	26	1.7	4.8
Primary School - Govt.	92	5.9	18.2
Primary School - Catholic	56	3.6	5.3
Primary School - other non Govt.	32	2.1	3.2
Secondary School -Govt.	85	5.5	11.5
Secondary School - Catholic	21	1.4	4.7
Secondary School - other non Govt.	30	1.9	3.9
Technical or Further Education	26	1.7	5.9
University or tertiary institution	32	2.1	16.1
Other	15	1	2.8
Not stated	195	12.6	23.7



TABLE 6: LEVEL OF EDUCATION OF PEOPLE LIVING IN MUNDOOLUN

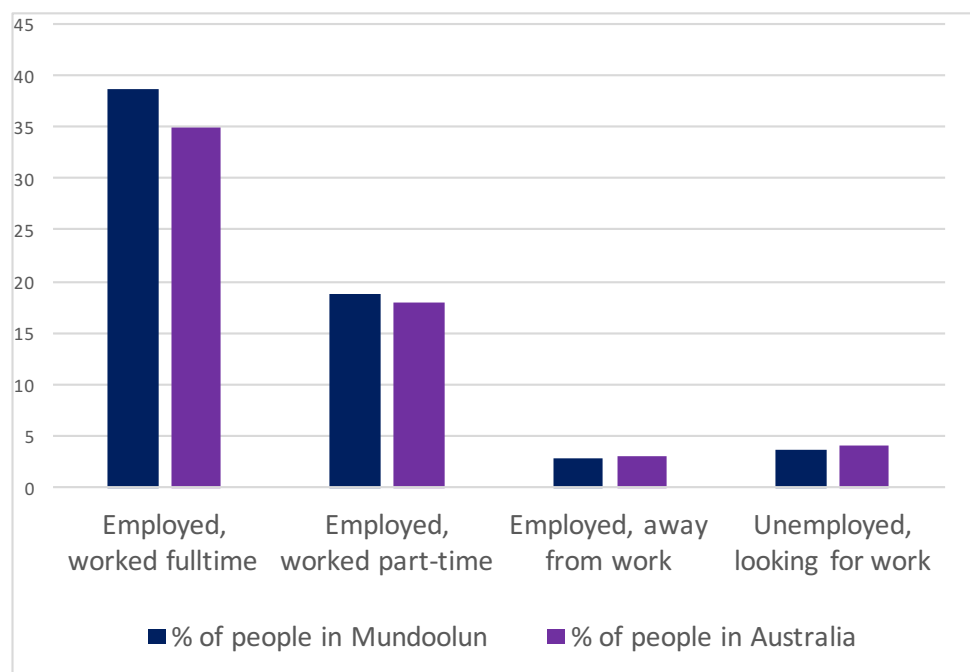
Number of people 15 years and over: 1,153

	NO. OF PEOPLE IN MUNDOOLUN	% OF PEOPLE IN MUNDOOLUN	% OF PEOPLE IN AUSTRALIA
Postgraduate Degree	0	0	.07
Doctoral Degree	3	0.3	0.61
Master Degree	7	0.6	3.1
Grad Dip and Grad Cert	3	0.3	0.14
Grad Dip	4	0.3	1.11
Grad Cert	4	0.3	0.3
Bachelor Degree	79	6.9	11.6
Adv Dip and Dip	0	0	.05
Adv Dip/Associate Degree	27	2.3	2.4
Diploma	62	5.4	3.7
Cert III and IV	205	17.8	11.2
Cert I and II	8	0.7	0.7
Cert	17	1.5	1.1
Level of education inadequately described	0	0	0.4
Level of education not stated	16	1.4	1.1
Total	435	37.7	38



EMPLOYMENT AND HOUSEHOLD INFORMATION

FIGURE 5: SELECTED LABOUR FORCE STATISTICS (PEOPLE AGED 15 AND OVER)



Number of people aged 15 years and over in Mundoolun: 1,153
 Number of people in the labour force: 736
 Number of people not in labour force: 290

TABLE 7: NO OF PERSONS EMPLOYED BY OCCUPATION (AGED 15 YEARS AND OVER)

	% OF PEOPLE IN MUNDOOLUNG.5	% OF PEOPLE IN AUSTRALIA
Managers	8.8	7.3
Professionals	7.5	12.4
Technicians and trade workers	10.5	7.6
Community and personal service workers	5.7	6.0
Clerical and administrative workers	8.4	7.6
Sales workers	5.6	5.2
Machinery operators and drivers	5.5	3.5
Labourers	6.5	5.3
Inadequately described/not stated	0.7	0.9

Source: ABS Census 2016

Please note small random adjustments are made to cell values to protect the confidentiality of data. This may cause the sum of rows or columns to differ by small amounts from table totals.

FIGURE 6: TOTAL WEEKLY INCOME OF FAMILIES IN MUNDOOLUN

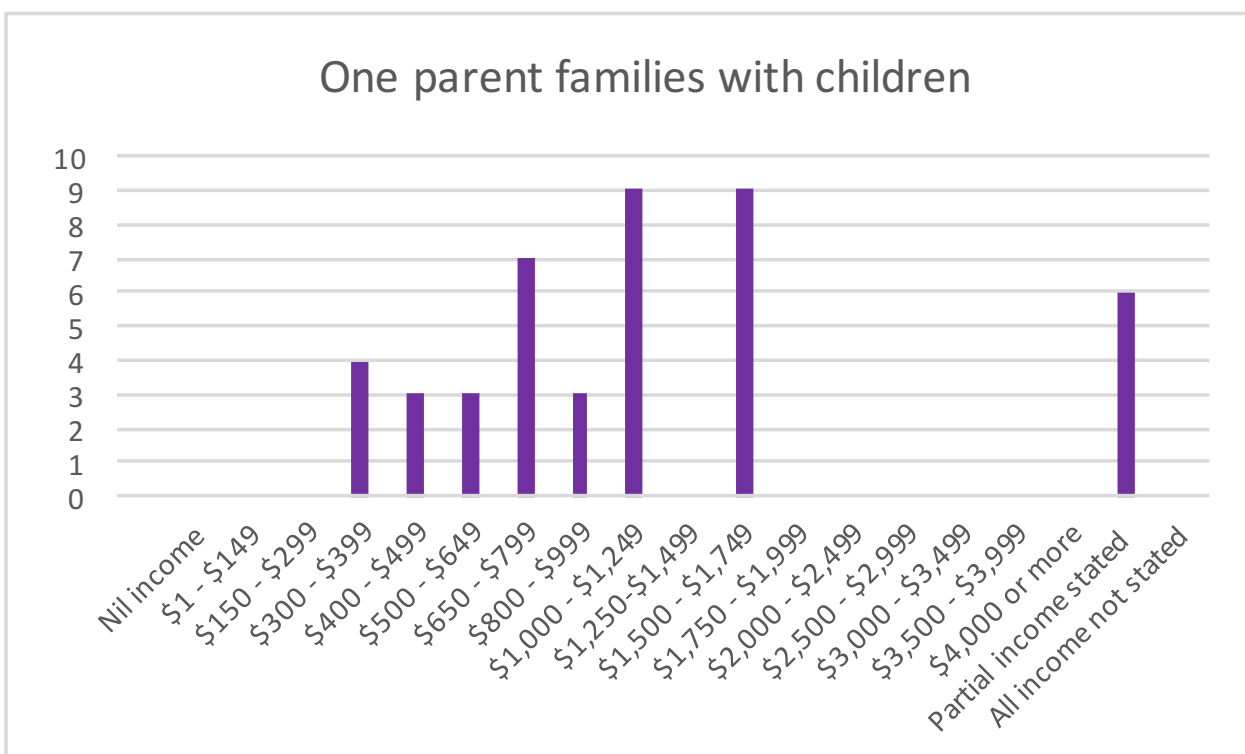
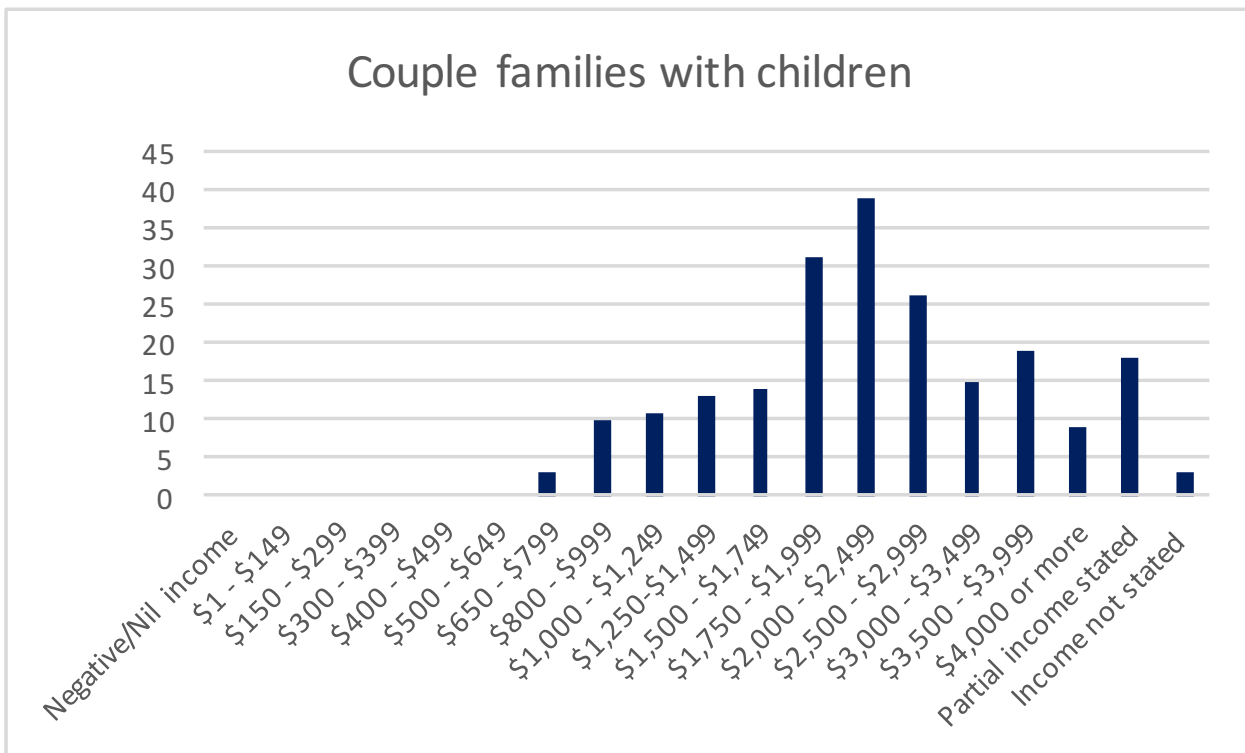


TABLE 8: HOUSEHOLD INCOME AND HOUSING COSTS - SELECTED MEDIANS AND AVERAGE

	MUNDOOLUN	LOGAN	AUSTRALIA
Median age of persons	38	34	38
Median total personal income (\$/weekly)	740	635	662
Median total family income (\$/weekly)	1,935	1,546	1,734
Median total household income (\$/weekly)	1,913	1,416	1,438
Median mortgage repayment (\$/monthly)	2,164	1,733	1,755
Median rent (\$/weekly)	450	335	335
Average number of persons per bedroom	0.8	0.8	0.9
Average household size	3.2	2.9	2.6

Source: ABS Census 2016

Please note small random adjustments are made to cell values to protect the confidentiality of data. This may cause the sum of rows or columns to differ by small amounts from table totals.

INTERNET CONNECTION

TABLE 9: DWELLING INTERNET CONNECTION

	% OF DWELLINGS IN MUNDOOLUN	% OF DWELLINGS IN LOGAN	% OF DWELLINGS IN AUSTRALIA
Internet accessed from dwelling	89.8	84.7	83.1
Internet not accessed from dwelling	6.7	12.6	14.1
Not stated	1.2	2.7	2.6

Source: ABS Census 2016

Please note small random adjustments are made to cell values to protect the confidentiality of data. This may cause the sum of rows or columns to differ by small amounts from table totals.



TRANSPORT

FIGURE 7: NUMBER OF MOTOR VEHICLES BY DWELLING

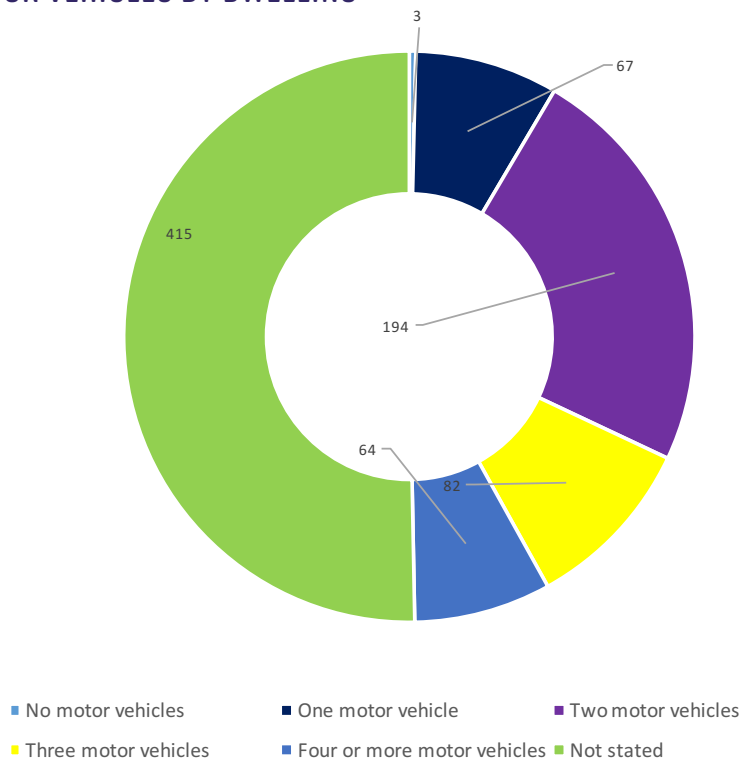


TABLE 10: PRIMARY SINGLE METHOD OF TRANSPORT TO WORK

	% IN MUNDOOLUNO.5	% IN LOGAN	% IN AUSTRALIA
Train	0	1.3	5.6
Bus	0.5	3.3	3.7
Ferry	0	0	0.1
Tram (includes light rail)	0	0	0.7
Taxi	0	0.1	0.2
Car, as driver	88.6	83.1	74.8
Car, as passenger	5.1	6.8	5.7
Truck	2.3	1.9	1.0
Motorbike/scooter	1.9	1.1	0.7
Bicycle	0	0.3	1.2
Other	0.7	0.6	0.8
Walked only	0.5	1.3	4.3

Source: ABS Census 2016

Please note small random adjustments are made to cell values to protect the confidentiality of data. This may cause the sum of rows or columns to differ by small amounts from table totals.

FOR UP-TO-DATE CRIME INFORMATION ABOUT THIS AND OTHER LOGAN SUBURBS, GO TO [HTTPS://DATA.POLICE.QLD.GOV.AU/CRIMESTATSMOBILE/#/MAP](https://data.police.qld.gov.au/crimestatsmobile/#/map)



 (07) 3382 1163

 info@logantogether.org.au

 facebook.com/LoganTogether

 [@LoganTogether](https://twitter.com/LoganTogether)

